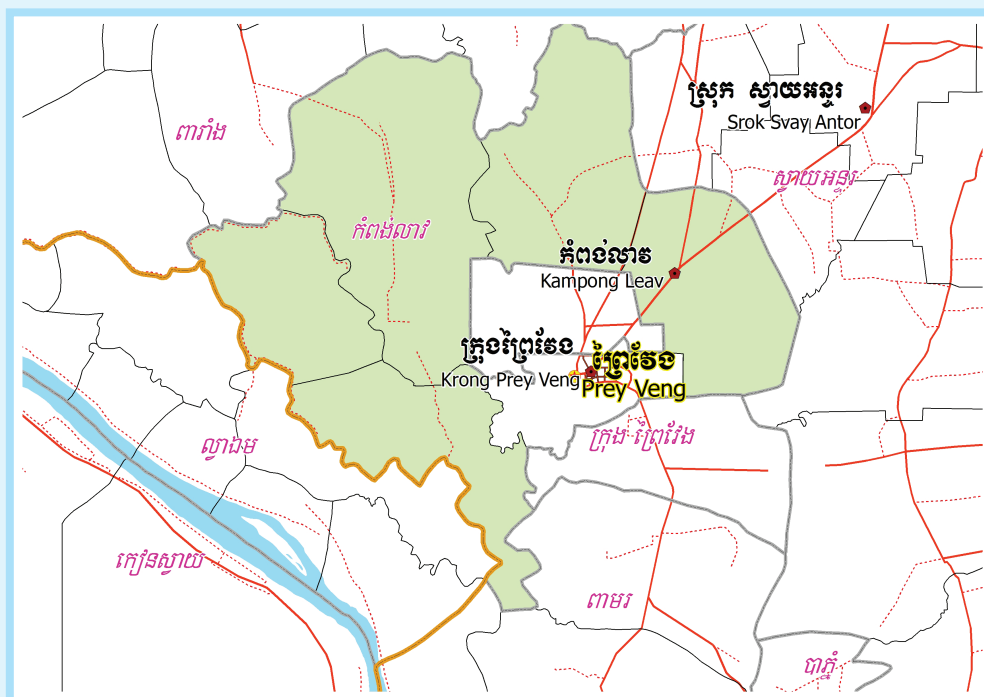


KINGDOM OF CAMBODIA
Nation Religion King



**National Committee for Sub-National
Democratic Development (NCDD)**



KAMPONG LEAV DISTRICT DATA BOOK 2009

District Code Nr: 1411
Prey Veng Province

October 2009

Kampong Leav District Data Book 2009

District Code Nr: 1411

Prey Veng Province

Table of Contents

List of Abbreviations	i
Glossary.....	ii
Preface	vi
Introduction	vii
SECTION A: GEOGRAPHY	1
1 Administration and Infrastructure.....	3
2 Land Use and Natural Resources.....	5
3 Geography	7
3.1 Land Area	7
3.2 Distances between Offices	7
SECTION B: DISTRICT PROFILE	9
1 General Information	11
1.1 Population of the District.....	11
1.2 Occupations	12
1.3 Property	14
2 Infrastructure and Economy.....	16
2.1 Roads in meters over 3 years.....	16
2.2 Sewerage Pipes in meters over 3 years.....	16
2.3 Drainage and Bridges	16
2.4 Services in the District	16
2.5 Agriculture.....	17
3 Social Aspects	27
3.1 Education	27
3.2 Health.....	33
3.3 Water and Sanitation	35
3.4 Vulnerable groups.....	39
3.5 Migration	41
4 Natural Resources and Environment (NRE).....	43
4.1 Families involved with NRE issues over 3 years	43
4.2 Percentage of Families involved with Natural Resource issues, by Commune, for 2008	43
4.3 Percentage Houses with access to Garbage collection and Families affected by environmental Pollution, by Commune, for 2008	43
4.4 Percentage Families using chemical Fertilizer and chemical Pesticides, by Commune, for 2008 ..	44
5 Administration and Security	45

5.1	Birth Registration across 3 years.....	45
5.2	Number of unregistered Infants born in 2008, by Commune	45
5.3	Registered criminal Cases over 3 years	45
5.4	Registered criminal Cases per 10,000 people, by Commune, for 2008.....	45
5.5	Number of registered Land Disputes, by Commune, in 2008	46
6	Gender	47
6.1	Registered Domestic Violence over 3 years.....	47
6.2	Percentage of registered cases of Families experiencing domestic Violence, by Commune, in 2008	47
6.3	Women's involvement over 3 years.....	47
6.4	Percentage of Female Participants in Civil Society and of 18-60 year women with uncertain Jobs, by Commune, in 2008	48
6.5	Female-headed Households over 3 years.....	48
6.6	Percentage female-headed Households and with Children of less than 5 years old, by Commune, in 2008	48
7	Indigenous People in the District	49
7.1	Ethnic Minorities in the District over 3 years.....	49
7.2	Other Minorities in the District over 3 years.....	49
	SECTION C: PLANS AND PROJECTS	51
8	Priorities and Plans	53
8.1	Priorities of Commune Councils for 2009 in the District by Sector	53
8.2	Temporary Agreements by Commune, for 2009	57
8.3	Outputs, estimated and actual costs of C/S Fund Projects between 2005 and 2008, by Commune	65
8.4	Total Expenditure on C/S Fund Projects by sector and commune between 2005 and 2008.....	66
8.5	Actual 2009 C/S Fund projects by Commune	66
9	District level Projects from 2006 to 2009	68
9.1	District Initiative Infrastructure Projects from 2006 to 2009	68
9.2	District Initiative Service Projects from 2006 to 2009	69
9.3	Inter Commune Council Projects in 2008 and 2009	69
9.4	Other Projects in 2008 and 2009	71
	SECTION D: SERVICES AND ORGANIZATIONS	73
10	Infrastructure.....	75
10.1	Length of and Expenditure on Roads in 2008, by District	75
10.2	Scale of and Expenditure on Irrigation in 2008, by District.....	75
10.3	Power Supply in 2008, by District	76
11	Health Facilities.....	78

11.1 Health Facilities in the Province, by Operational District.....	78
11.2 Health Facilities and Staff in the province, by Operational District.....	79
11.3 Deliveries in 2007 in the Province, by Operational District.....	82
12 Education	83
12.1 Schools, Classes, Students, Staff, for for all levels, for 2007/2008 by District.....	83
12.2 Characteristics of Schools and School Principals for 2007/2008 by Commune	83
12.3 Enrolment by Level of Education, 2006/2007 by Commune	84
12.4 Enrolment by Level of Education, 2007/2008 by Commune	84
12.5 Aspects of Enrolment for 2007/2008 by Commune.....	84
12.6 School Buildings for all schools in the District for 2007/2008, by Commune	85
12.7 Conditions of Classrooms and Existence of Separate School Office and Library, by Commune	85
12.8 Community Participation and Financing across all schools in the District for 2007/2008 by Commune	85
12.9 Percentage Student Flow Rates and Graduation by level 2006/2007, by Commune	86
13 Staff and Resources at the District	87
13.1 District Councilors elected in 2009	87
13.2 Committees of the Council.....	87
13.3 Board of Governors.....	88
13.4 Offices under Sala Krong, Sala Srok and Sala Khan	88
13.5 Municipality/District/Khan line offices.....	88
13.6 Properties and Equipment of District Administration	89
13.7 Registered Revenue of the District Administration in 2008	90
13.8 Services in the District	90
13.9 Civil Society Organizations active in the District.....	90
13.10 Private Sector Organizations.....	92
SECTION E: POVERTY DATA	95
14 Data on Poverty	97
14.1 Predicted Poverty Rates for 2009, by commune	97
14.2 Poverty data from survey.....	97

List of Abbreviations

#	Number
AGR	Agriculture
BR	Birth Registration
C. Pilot	Piloted Commune
C/S	Commune / Sangkat
CBO	Community-Based Organization
CDB	Commune Database
CDPD	Commune Development and Planning Database
CIP	Commune Investment plan
CLTS	Community Led-Total Sanitation
Comm.	Commune
Com Cov	Commune Covered
CPA	Complementary Package of Activities
CPS	Community Preschool
CCWC	Commune Committees for Women and Children
DANIDA	Danish International Development Agency
DDLG	Democratic Development and Local Governance Project (EC-UNDP)
DFID	Department For International Development (UK)
DIP	District Initiative Project
DIS	District Information System
District PDRD	District Office of Rural Development
District WP	District Work Plan
DIW	District Integration Workshop
DoLA	Department of Local Administration
Dr	Doctor
DWRM	District Office of Water Resource and Meterology
ECD	Early Childhood education (part of PE)
EMIS	Education Management Information System
Event IC	Celebration of International Days
FDH	Former District Hospital
GTZ	German Society for Technical Cooperation (Gesellschaft für Technische Zusammenarbeit GmbH)
Ha	Hectare
HC	Health Center
HC (NB)	Health Center (no building)
HH	Headed Household
HSI	Intervention for Health
HP	Health Post
HW	Hand Washing
ICC	Inter Commune Council
IFAD	International Fund for Agricultural Development
IND	Industry
Inter-commune	Inter-Commune Project Management Committee or Inter-commune project
IO	International Organization
LASED	Land Allocation for Socio-Economic Development
LGCR	Local Governance for Children's Rights
M&E	Monitoring and Evaluation
MA	Medical Assistant
MoEYS	Ministry of Education, Youth and Sports
MoH	Ministry of Health

MoP	Ministry of Planning
MPA	Minimum Package of Activities
MW1	Primary Midwives
MW2	Secondary Midwives
n/a	Not available
NCD	National Contracts Database
NCDD	National Committee for Sub-National Democratic Development
NGO	Non-Governmental Organization
NRML	Natural Resources Management and Livelihood
NU1	Primary Nurse
NU2	Secondary Nurse
OD	Operational District
ODF	Open Defecation Free
Ope. Costs	Operational Costs
Others	Other Staff
PBW	Public Works
PDoEYS	Provincial Department of Education, Youth and Sport
PDRD	Provincial Department of Rural Development
PDWRM	Provincial Department of Water Resource and Meteorology
PE	Parenting Education
PHAST	Participatory Hygiene and Sanitation Transformation
PHD	Provincial Health Department
PID	Project Information Database
PMC	Project Management Committee
Pop 04-05	Population Covered 2004 or 2005
PSDD	Project to Support Democratic Development through Decentralization and Deconcentration
RRD	Rural Road Development
RH	Referral Hospital
RILGP	Rural Investment and Local Governance Project
RPRP	Rural Poverty Reduction Program
RuLIP	Rural Livelihoods Improvement Program
SIDA	Swedish International Development Cooperation Agency
SPPA	Senior Provincial Program Advisor
TBA	Traditional Birth Attendant
UNDP	United Nations Development Project
UNICEF	United Nations Children's Fund
Vil	Village
Vil Cov	Village Covered
VIL-HC	Distance from Village to Health Center
WASH	Water, Sanitation and Hygiene
WRM	Water Resource and Meteorology

Glossary

C/S Fund: The Commune/Sangkat Fund is established and managed by the Government of Cambodia to provide financial support for development projects and administrative costs of Commune/Sangkat Councils. The amount is determined as a percentage of the National Budget (for 2009: 2.8% over the 2008 budget) and is expected to increase gradually over the years. The total 2009 budget under this fund is \$ 27,643,902 (of which \$ 19,272,170 is for Development Projects and \$ 8,371,731 for Administration). Under the Rural Investment and Local Governance Project the World Bank currently reimburses the costs of development projects if these meet the Bank's criteria.

CDB: the Commune Data Base is a national database, compiled by the Ministry of Planning, on the basis of detailed questionnaires, completed at village and commune level, which are then sent to the Departments of Planning for data entry. The most recent round of data collection took place at the end of 2008 (and is reflected in the District Data Books). Commune, District and Provincial Profiles can be generated from this database and should be available from provincial Departments of Planning.

CDPD: the Commune Development and Planning Database is a database maintained by Departments of Planning and Ministry of Planning, recording proposed activities as determined and prioritized by Commune and Sangkat Councils; the Temporary Agreements between these councils and supporting agencies, as decided at District Integration Workshops and details on projects that actually take place at commune, district and provincial levels.

CIP: The Commune Investment Plan is a rolling three-year plan, developed and decided by the Commune or Sangkat Council. It sets priorities and identifies the projects proposed for the years to come.

Commune and Sangkat (C/S): the Communes (in rural areas) and Sangkats (in urban areas) are the lowest and smallest units of local government. Councils are elected directly, once in five years, for the 1417 Communes and 204 Sangkats. In the C/S there are 14,119 villages, which have Village Chiefs, but don't constitute a formal level of local government.

DIP: the District Initiative Project is jointly supported by the MDLF (Multi-Donor Livelihood Facility (supporting the NRM&L Program)) and PSDD. In 2009 it covers 106 districts, 60% of the total in the country, with a budget of \$ 3.2 million. It is focused on capacity development in planning, democratic development, public competitive procurement, financial management and service delivery.

DIS: The District Information System is a national database maintained by NCDD, recording resources, staff, revenue, infrastructure and equipment available in the 193 Districts and Khans throughout the country. The last update took place in July 2009.

District, Municipality and Khan constitutes the third level of Government in Cambodia. There are 159 rural Districts, 26 Municipalities and 8 Khans of Phnom Penh Capital. They all have Councils which were, for the first time, elected in May 2009, by the Commune/Sangkat Councilors. These councils have a mandate for 5 years.

DIW: District Integration Workshops are held between July and October, to bring Commune/Sangkat Councils, looking for support for their projects, together with the governmental and non-governmental agencies that may provide support.

ICC: Inter Communes Council projects are executed in 10 provinces under the Democratic and Decentralized Local Governance Project (DDLG). This five year project (2006-2010) is executed by Ministry of Interior and funded by the European Commission and UNDP. The project focuses on improving dialogue partnership and accountability; create a network of Commune Councils at the provincial and national level and support and contribute to local area development for poverty reduction. The work under the ICC component supports investments and services formulated through inter-commune dialogue and planning.

MEDiCAM: A non-profit and non-partisan membership organization for NGOs active in Cambodia's health sector. It is the primary networking agency for health-related NGOs.

NCDD: the National Committee for sub-National Democratic Development is the inter-ministerial body charged with the implementation of the Organic Law (a key legislative document, adopted in 2008, outlining the envisaged decentralization). NCDD also channels substantial financial assistance by a number of Development Partners, to projects and programs at various levels. This amounted to over \$ 91 million in 2008. More information at: www.ncdd.gov.kh. This website also provides access to reports, manuals, legal documents, details on projects and more.

OD: the Operational Districts are the districts as defined and used by the Ministry of Health. These do not coincide with the 193 (Administrative) Districts and Khans, as used by all other RGC agencies. The Operational Districts are usually larger, and so there are 77 Operational Districts against 193 administrative Districts and Khans. However they do fit within the boundaries of administrative provinces.

PID: The Project Information Database is the database maintained by NCDD at national and sub national level, to follow all aspects of projects by Commune and Sangkat Councils, including the C/S Fund projects

Provincial Investment Fund (PIF)

The Provincial Investment Fund is allocated to all Provinces and Municipalities according to a population based formula. Part of the fund is earmarked for support to planning activities of the Provincial / Municipal Department of Planning; and to gender mainstreaming activities of the Provincial Department of Women's Affairs. The remaining "un-earmarked PIF" is allocated by PRDC to sectoral technical departments against established criteria and in response to proposals with prioritisation taking into account: priorities formulated by the CS Councils and aggregated by District into District Priority Activities Matrices (DPAM); alignment with national planning and poverty alleviation criteria, complementarity with other planned activities; and performance of the Department concerned in implementation of activities in previous years. With this provisional allocation, the Department then programs activities through the District Integration Process. Finally, the agreed activities, plus support costs amounting to no more than 25% of the total, are included in a sub-contract signed between PRDC and the Department, pursuant to the overall PSDD contract signed between NCDD and PRDC. Total budget has been around \$ 2 million per year.

Province: the 23 Provinces and Phnom Penh Capital City represent the 2nd layer of government. They vary in size, from very small, like Kep (approx. 36,000 people) and Pailin (approx. 70,000 people), or large but with small populations, like Mondulkiri (over 60,000 people), and Ratanakiri (over 153,000) to densely populated and large, like Kampong Cham (over 1.7 million people) and Kandal (approx. 1.4 Million people).

PSDD: the Project to Support Democratic Development through Decentralization and Deconcentration is funded by DFID (UK), SIDA (Sweden) and UNDP and runs from 2006 till the end of 2010 (including a one year extension). Annual budgets range from \$ 11 million to over \$ 18 million. The project provides core technical support to NCDD and to the provinces, financial support to the C/S Fund, District Initiative, Provincial Investment Fund and capacity building support through training, studies and advisory services.

RILGP: The Rural Investment and Local Governance Project is a World Bank funded project that provides substantial support to C/S Fund projects and to developing the required infrastructure, policies, systems and skills. It started in 2003 with a Loan for \$ 22 million for 2003-2007 and was then extended with a Grant of \$ 36 million for the period of 2007-2010. Discussions about a possible RILGP 2 are taking place between RGC and the World Bank.

RPRP: the Rural Poverty Reduction Project is a seven year project from 2004 till 2010, funded by IFAD and UNDP and implemented through the Ministry of Agriculture, Forestry and Fishery, supported by the Ministry of Interior and facilitated by NCDD. The project is active in the provinces Prey Veng and Svay Rieng and focuses on 120,600 households below poverty line. The objective is poverty reduction with the active participation of the poor through improved livelihoods, Strengthened capacity, Sustainable farming systems and natural resource management, new and/or rehabilitated infrastructure development, increase accessibly to technology, services and markets for their economic and social development.

RULIP: the Rural Livelihoods Improvement Project is implemented by the Ministry of Agriculture Forestry and Fisheries (MAFF)' Project Support Unit- PSU, with the NCDD playing the role of cooperating agency. Funded by IFAD and UNDP, the project will run till 2014. The target group consists of poor households who have little or even no land, few livestock or other assets and often many dependents. The main goal of the project is to directly or indirectly improve the livelihood systems, food security and incomes of a total of 33,900 rural poor, ethnic minority and female headed households in targeted village of Kratie, Preah Vihear and Ratanakiri provinces in a sustainable manner.

Seth Koma: The UNICEF funded Seth Koma program focuses on measurable action for children and women. During 2006 -2010 it is implemented in six provinces. Government and UNICEF pursue a set of inter-related goals, addressing critical stages of the life cycle of the child: a) Mothers have safe pregnancies and deliveries and healthy newborns; b) best possible start in life of infant; c) Children enter schools at the right age of six years; d) Children are protected from exploitation, abuse, violence, discrimination and other risks; and e) Youth and adolescents acquire life skills, express their views, participate in the decisions.

Preface

The Government of Cambodia attaches great importance to optimal use of scarce resources and to participatory planning and management at all levels. The Organic Law which was adopted in 2008 provides the legal context for further steps towards improving and decentralizing planning, management and monitoring, and towards greater accountability and transparency of institutions at sub-national levels.

The Government has established elected Councils at the sub-national levels, and we will progressively give them the responsibilities, together with the human and financial resources, to deliver a wide range of public services. They will be more democratic, more efficient, more transparent and accountable, better at addressing gender and other inequalities, and at fighting corruption. We recognize that development does not come from government alone; it needs the involvement of citizens, civil society and the private sector, and the new system will facilitate this.

A central element in this process is the availability of information on any aspect of development to all concerned parties. The newly elected Councillors at District and Khan level, line departments operating at these levels, but also NGOs, Development Partners, Commune Councillors and citizens throughout Cambodia need information on problems and requirements, resources and opportunities, services and agencies, plans and projects. They will need such information to better understand the present situation, set targets for the future, monitor progress, know what others are doing and to apply resources wisely and this is the reason the District Data books will be so valuable.

The District Data Books are a major step towards full transparency and towards informed planning and decision-making. They provide all available data at District, Khan, Commune and Sangkat level in easily accessible formats, in Khmer and English, through over 16,000 printed copies, CD-ROMs and the NCDD website.

This is the first time in Cambodia (and possibly in South East Asia) that such detailed information is made so widely available and NCDD should be commended for the hard work that has gone into this. We also thank the Ministry of Planning, which provided the detailed data of the Commune Data Base, the sectoral ministries and provincial authorities who contributed data and the Development Partners who provided financial support.

It is our sincere hope that the publication of the District Data Books will strengthen capacities, especially at district levels, for evidence-based development planning. We also hope that this information will deepen the understanding among Ministries, Provincial Authorities, Development Partners, NGOs and research agencies of the realities at commune and district levels.

We call upon all to use and distribute this information, complement or correct where appropriate and to contribute new data in the years to come.

Sar KHENG

Deputy Prime Minister, Minister of Interior and Chairman of NCDD

Introduction

Purpose

The purpose of the District Data Books is to bring together information on any aspect of life and development of Districts, Khans, Communes and Sangkat, together and make this widely available. The primary targets are the newly elected District Councilors, district level line departments, provincial agencies, Development Partners and NGOs operating at this level. They need detailed knowledge on current living conditions, natural resources, infrastructure, agriculture and other economic activities, current service levels, past and planned projects and available resources.

While much information exists on many of the above aspects, it is often hard to access that information and much is lost to reports, databases and statistics that are not widely shared. Data are often only available in one language and often out-of-date, and many reports cover only one sector or region.

We found that these problems are especially acute at the district level. Now that Districts are becoming a much more significant level of local government and development planning, there is an urgent need for wide-ranging data to be used for setting base-lines, planning and prioritizing, monitoring and learning.

Approach

We have attempted to identify and compile all available statistics, reports, maps and other data at district and/or commune level. From this we have selected information that is available for all or most districts, reasonably reliable and up-to-date, sufficiently detailed and of possible interest to development planners, decision makers, agencies and citizens.

The major sources of the information in these District Data Books are:

- a) The Commune Data Base information over the years 2006 to 2009 (the most recent data were collected late last 2008), as compiled by the Ministry of Planning
- b) Detailed information directly collected from the Ministry of Health, the Ministry of Education, Youth and Sports and (for maps) the Ministry of Land Management, Urban Planning and Construction
- c) The Project Information Database (PID) at NCDD (up-to-date)
- d) The Commune Development and Planning Database (CDPD) (up to date)
- e) The District Information System (DIS) (updated per Mid 2009)
- f) Direct data collection at provincial and district level on private sector, irrigation, roads, and electricity, through provincial agencies
- g) Medical data collected from MEDiCAM
- h) The ID Poor Project – for poverty data on a number of provinces and districts
- i) NCDD's work on predictive poverty rates
- j) Specific projects for outputs, plans and budgets (Seth Koma, RILGP, RPRP and ICC)

Limitations of the data

We are fully aware that the data we collected are not always complete, consistent or correct. While we have rejected information that was wrong or very incomplete, we decided not to aim for statistical and scientific perfection, but to include information that is useful, relevant

and comprehensive. We also accepted different sources for the same data as this may encourage discussion on the quality of the respective data.

We strongly encourage anyone who notes errors or incompleteness in these data to contact us and to share their data. We hope that the next round of producing such District Data Books can draw on wider sources and more complete data.

We encourage the District Administrations, who receive these data also in digital format, not only to use these for their planning and monitoring, but also to start correcting and updating these data and to share new data with NCDD for future use.

Contents

The information in the following pages is organized in five sections:

- a) **Geographical data:** this section provides maps on infrastructure and administration and on land use and natural resources management. These maps are also provided in large format to all Districts and Khans.
- b) **District Profile:** this presents wide ranging data, covering 2006 – 2009, at district and commune level, extracted from the Commune Data Base, but edited for better understanding.
- c) **Plans and Projects:** this section presents development priorities determined by Commune and Sangkat Councils, Temporary Agreements, outputs and expenditure of major projects at Commune and District level over 2006 – 2008 and plans and budgets for 2009.
- d) **Services and Organizations:** this section provides details on key infrastructure (roads, electricity, irrigation systems) and services in health and education at district and commune level. It also provides an inventory of resources at the District Administration, NGOs operating in the district and private sector agencies active in the district.
- e) **Poverty Data:** this section provides predicted poverty rates for 2009 for all districts and communes and detailed poverty data compiled and processed by the ID Poor project for those that have been covered by this project.

The future

It is our hope that this is the start of a longer-term process. We hope that a next edition of these District Data Books will offer more comprehensive, correct and up-to-date information. We hope that the District Administrations will not only start using this information, but also improve and update it. For this they are all provided with the full data set in digital format.

We invite agencies, projects and experts to send reports, statistics and maps that could be used for a next version to us and we invite all users of the District Data Books to inform us about errors, updates and inconsistencies. Please contact us through info@ncdd.gov.kh

We now invite you to browse through this data book. You may open this randomly or use the table of contents and go to the aspects that have your special interest.

We hope that you will be informed, surprised and assisted. We hope, above all, that this information will lead to a deeper understanding of causes and effects of poverty, to purposeful decisions on how to tackle those causes and to greater transparency in using scarce resources for the benefit of all.

Martin de Graaf
Program Advisor, PSDD/NCD

SECTION A: GEOGRAPHY

1 Administration and Infrastructure

Please see separate folder containing A3 maps.

2 Land Use and Natural Resources

Please see separate folder containing A3 maps

3 Geography

3.1 Land Area

Total Land Area (ha)	Forest Land Area (ha)		Cultivation Land Area (ha)	Construction Land Area (ha)	Other Land Area (ha)
	Total	Flooded Forest Area			
18330	372	372	12459	1050	4459

3.2 Distances between Offices

Location	Distance (Km)
From District Office to C/S Office of Preaek Chrey	7
From District Office to C/S Office of Prey Kanlaong	22
From District Office to C/S Office of Pou Rieng	12
From District Office to C/S Office of Preaek Anteah	4

SECTION B: DISTRICT PROFILE¹

¹ All data in this section come from the Commune Database (CDB) unless otherwise specified. These include primarily new CDB data, collected late 2008, and some data from earlier years. Please note that percentages are rounded to the nearest whole number.

1 General Information

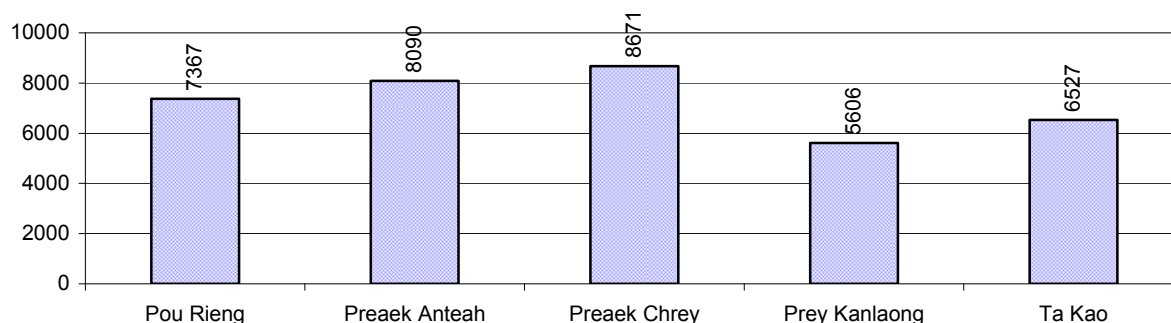
1.1 Population of the District

1.1.1 Total Population

Number of families	2005	2006	2007	2008
Total number of families	7,118 families	7,252 families	7,407 families	7,582 families
Increase (+)/Decrease (-) in nr of families		2%	2%	2%
Total population	33,514 pers	34,040 pers	34,862 pers	36,261 pers
Increase (+)/Decrease (-) in nr of people		2%	2%	4%
Number of female Headed Households (HH)	1,139 families	1,291 families	1,240 families	1,345 families

Note: Percentages of population and increase/decrease are calculated on basis of the previous year. A negative sign in front of the percentage indicates a decrease in population.

1.1.2 Population, by Commune, in 2008



1.1.3 Population, by Age Group, over 3 years

Population by age group	2006	2007	2008	
	%	%	%	Number
Age 0-5 years (as percentage of the population)	11%	11%	11%	3,974 persons
Male 0-5 yrs	54%	54%	54%	2,158 persons
Female 0-5 yrs	46%	46%	46%	1,816 persons
Age 6-17 (as percentage of the population)	31%	29%	29%	10,369 persons
Male 6-17 yrs	48%	49%	49%	5,049 persons
Female 6-17 yrs	52%	51%	51%	5,320 persons
Age 18-60 (as percentage of the population)	52%	53%	54%	19,408 persons
Male 18-60 yrs	48%	47%	47%	9,205 persons
Female 18-60 yrs	52%	53%	53%	10,203 persons
Age 61 above (as percentage of the population)	6%	6%	7%	2,510 persons
Male 61	43%	41%	43%	1,085 persons
Female 61	57%	59%	57%	1,425 persons

Note: The overall percentage for each age group is calculated on the basis of the total population. The gender distribution of each group is calculated on the basis of the population within that particular age group.

1.2 Occupations

1.2.1 Percentage of families with a particular Occupation over 3 years

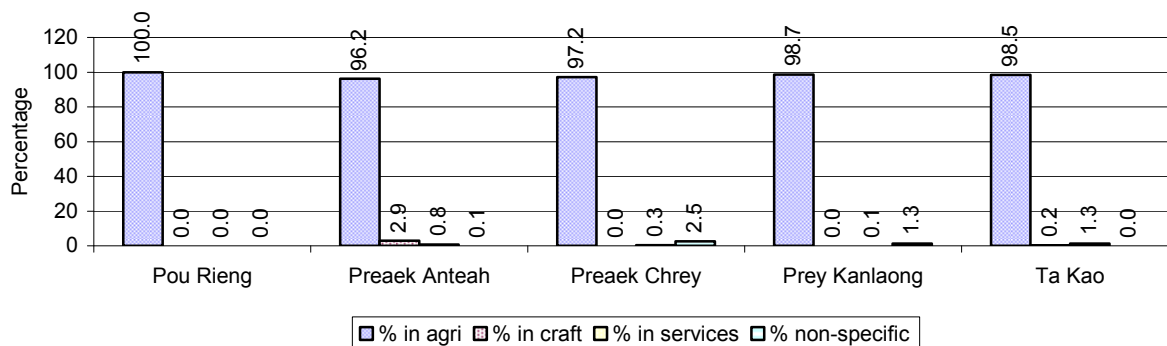
This table shows the percentage of the population who have a particular occupation (job), for example the percentage of the population in the district who are rice farmers, furniture crafter, trader, etc.

Description	2006	2007	2008	
	%	%	%	Number
Families whose main occupation is agriculture	95%	95%	98%	7,431 Families
Families whose primary occupation is rice farming	95%	95%	98%	7,414 Families
Families whose primary occupation is cultivating long-term crops	0%	0%	0%	0 Families
Families whose primary occupation is cultivating short-term crops	0%	0%	0%	0 Families
Families whose primary occupation is cultivating vegetable	0%	0%	0%	0 Families
Families whose primary occupation is fisherman	0%	0%	0%	15 Families
Families whose primary occupation is livestock farmer	0%	0%	0%	2 Families
Families whose primary occupation is NTFP collection	0%	0%	0%	0 Families
Families whose main occupation is craft work	1%	1%	1%	56 Families
Families, whose main occupation is in furniture craft, wooden, rattan, vine, bamboo	0%	0%	0%	0 Families
Families whose main occupation is in metal, aluminum, glass goods production	0%	0%	0%	0 Families
Families whose main occupation is food production	0%	0%	0%	0 Families
Families whose main occupation is tire, plastics and rubber goods production	0%	0%	0%	0 Families
Families whose main occupation is textile, clothing goods production	1%	1%	1%	56 Families
Families whose main occupation is in other production, not listed above	0%	0%	0%	0 Families
Families whose main occupation is services	0%	1%	1%	39 Families
Families whose main occupation is trade	0%	0%	0%	26 Families
Families whose main occupation is repair	0%	0%	0%	4 Families
Families whose main occupation is providing transport services	0%	0%	0%	6 Families
Families whose main occupation is providing other services	0%	1%	0%	3 Families
Families whose main occupation is not clear (or multi)	3%	3%	1%	56 Families

Note: The occupation percentages are calculated on the basis of the total number of families.

1.2.2 Percentage Families that work in one of four occupational sectors, by Commune in 2008

This table indicates the percentage of families involved in one of four occupation types: agriculture, craft, services or non-specific (other). Please note agriculture includes forestry activities such as cutting down trees and gathering gum from the trees.



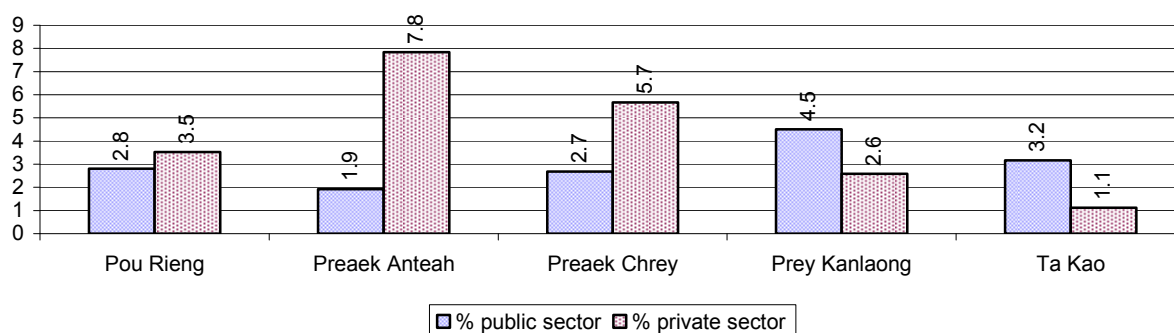
Note: Calculated on the basis of the total number of families within a commune.

1.2.3 Percentage of Families with public Sector, private Sector or uncertain Jobs, over 3 years

Description	2006	2007	2008	
	%	%	%	Number
Families that have a family member who is a government official, staff or worker	3%	3%	3%	220 families
Families that have a family member who is a private sector staff or worker	5%	6%	4%	335 families
Number of people aged 18-60 with uncertain/irregular jobs	0%	0%	0%	57 persons

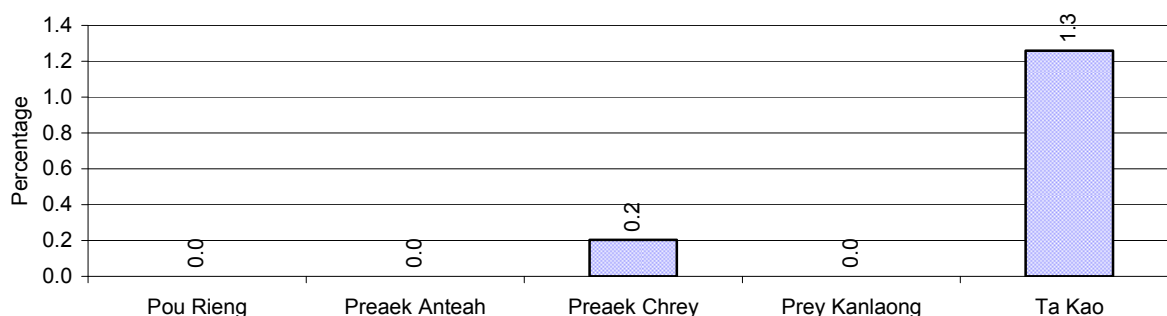
Note: In the first two rows percentages are calculated on the basis of the total number of families. In the third row the percentage is calculated on the basis of the total number of people aged 18-60 years.

1.2.4 Percentage of Families with public or private Sector Jobs, by Commune in 2008



Note: Calculated on the basis of the total number of families in the commune

1.2.5 Percentage of People aged 18-60 years with uncertain/irregular Jobs, by Commune, in 2008.



1.3 Property

1.3.1 Housing types and facilities over 3 years

This table shows the percentage of people living in a certain type of house. It also indicates how many houses have electricity or battery powered lights and how many have TV.

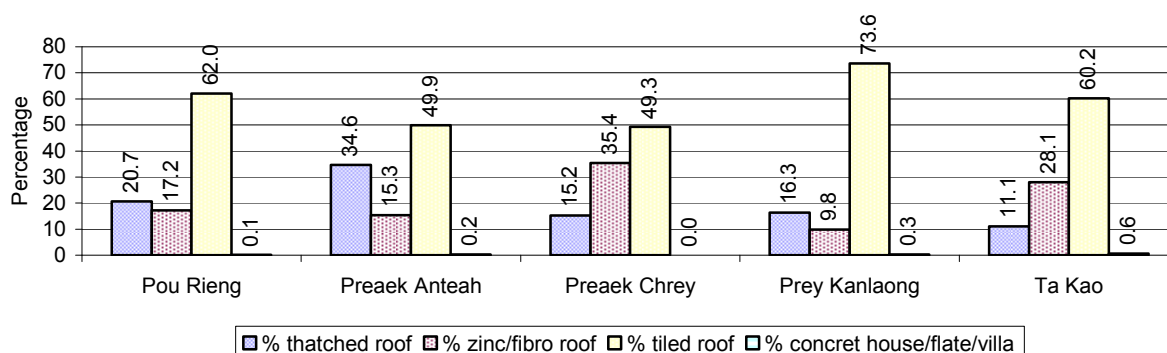
House Type	2006	2007	2008	
	%	%	%	Number
House with thatched roof	26 %	24 %	20 %	1,301 houses
House with zinc/fibro roof	18 %	19 %	21 %	1,350 houses
House with tiled roof	56 %	57 %	58 %	3,751 houses
Flats/apartments (with many families living)	0 %	0 %	0 %	0 houses
Concrete house or flat (with one family living)	0 %	0 %	0 %	15 houses
Villa house	0 %	0 %	0 %	0 houses
Houses with electricity	0 %	0 %	0 %	0 houses
Houses with battery light	89 %	94 %	93 %	5,951 houses
Houses with TV	81 %	82 %	84 %	5,367 houses

Note: Calculated against the total number of houses

1.3.2 Families living on public Land or without a permanent House

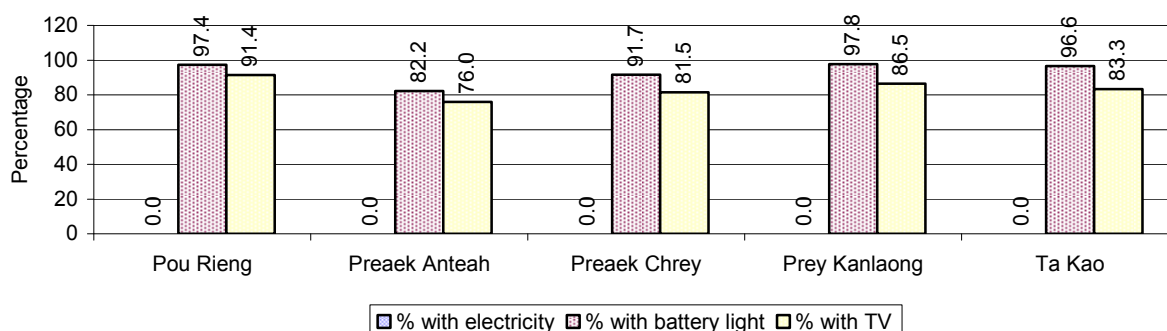
Living situation	2006	2007	2008
Families living in a house on public land	37 families	30 families	28 families
People, without permanent housing	8 person(s)	5 person(s)	2 person(s)

1.3.3 Percentage of Population living in a particular type of House, by Commune, in 2008



Note: Calculated against the total number of houses in each commune

1.3.4 Percentage of Houses with Electricity, Battery Lights and/or TVs, by Commune, in 2008



Note: Calculated against the total number of houses in each commune

1.3.5 Types of Vehicles and their ratio to Families across 3 years

This table shows the number of families per vehicle in the district. The last column shows the total number of each type of vehicle in the district for 2008.

Description	2006 ratio	2007 ratio	2008	
			Ratio	Number
Bicycle and bicycle with trailer	2	2	2	4,142
Ox-carts and horse-carts	5	5	6	1,369
Motorbike/with trailer	5	4	4	1,944
Motor tri-cycle	N/A	N/A	N/A	0
Large Transportation				
Total number of cars/trucks	108	114	112	68
Locally made vehicles	173	200	205	37
Trucks for goods transport	345	296	303	25
Buses/mini buses for passengers	2,417	7,407	2,527	3
Family cars	7,252	3,704	2,527	3
Agriculture machinery				
Tractors used for plowing	382	529	505	15
Power-tillage used for plowing	9	7	6	1,222
Other type of machinery				
Other type of machinery	N/A	529	505	15
Water transportation				
Row boats	3	3	3	2,770
Total number of motor boats	5	5	5	1,631
Motor boats used for fishing	7	7	7	1,120
Motor boats used for passengers	130	617	632	12
Motor boats used for goods transporting	15	16	15	499

Note: Ratio of families to a particular type of vehicle is the result of the total number of families divided by total number of that type of vehicle. Other types of vehicles, such as bulldozer, excavator, rollers etc. are not listed.

2 Infrastructure and Economy

2.1 Roads in meters over 3 years

Description	2006	2007	2008
Bituminous road	0 m	0 m	0 m
DBST, Macadam road	0 m	0 m	0 m
Concrete road	0 m	0 m	0 m
Laterite road	5,000 m	7,000 m	7,000 m
Constructed earth road	9,978 m	12,678 m	12,782 m
Un-constructed earth road	114,785 m	37,985 m	37,985 m

2.2 Sewerage Pipes in meters over 3 years

Description	Sewage pipe length		
	2006	2007	2008
Total length of sewage pipe, diameter 30-50 cm	0 m	0 m	0 m
Length of newly constructed sewage pipe, diameter 30-50 cm	0 m	0 m	0 m
Length of sewage pipe, diameter 30-50 cm needs repair/rehabilitation	0 m	0 m	0 m
Total length of sewage pipe, diameter of pipe 60-100 cm	5 m	0 m	0 m
Length of newly constructed sewage pipe, diameter 60-100 cm	0 m	0 m	14 m
Length of sewage pipe, diameter 60-100 cm needs repair/rehabilitation	0 m	0 m	0 m
Sewage pipe, diameter of pipe over 100 cm	0 m	0 m	0 m
Length of newly constructed sewage pipe, diameter over 100 cm	0 m	0 m	0 m
Length of sewage pipe, diameter over 100 cm needs repair/rehabilitation	0 m	0 m	0 m

2.3 Drainage and Bridges

Construction Type	2006		2007		2008	
	place(s)	Length	place(s)	Length	place(s)	Length
Single pipe culvert	11	55m	13	65 m	13	65 m
Double-pipe culvert	1	5m	1	5 m	1	5 m
Box pipe culvert	0	0m	0	0m	0	0 m
Wooden bridge	1	75m	1	75m	1	85 m
Concrete bridge	6	80m	3	45m	3	45 m
Bale bridge	0	0m	0	0m	0	0 m
Spillway construction	0	0m	0	0m	0	0 m

2.4 Services in the District

Descriptions	Number of places by year		
	2006	2007	2008
Public			
Electricity generating stations	0	2	2
Health clinics	0	0	0
Private			
Bicycle and motorcycle repair places	16	17	20
Agricultural machinery, tools and equipment repair places	5	5	6

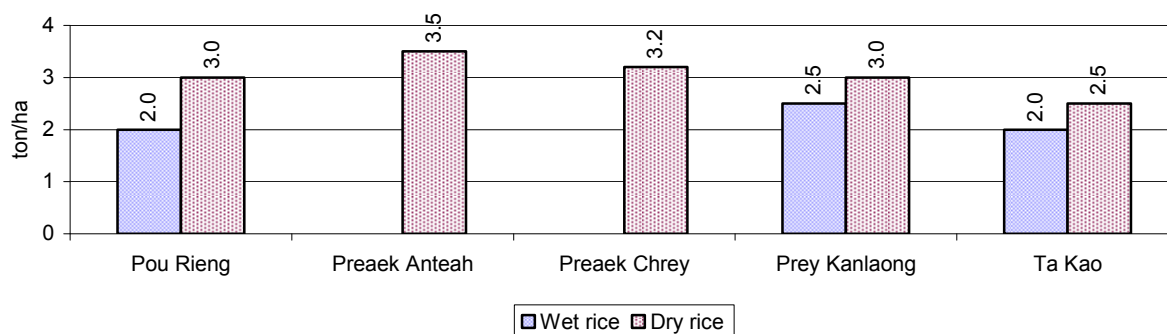
Descriptions	Number of places by year		
	2006	2007	2008
Electronic tool repair places	3	2	2
Battery-charging services	44	50	44
Handicraft places, wooden furniture and forest by-products	0	0	0
Other handicraft places (excluding furniture)	0	0	0
Small-scale services (hairstylist, phone service, massage, Karaoke, etc)	18	8	8
Small-scale food shop businesses (Food, groceries, drink shop, etc)	1	1	1
Small-scale rice mills	695	239	238
Medium or large-scale rice mills	0	0	1
Small-scale markets	0	2	2
Large-scale market	0	0	0
Alcohol refinery places	0	0	0
Pharmacies and small drug stores	0	0	0
Hotels	0	0	0
Guest houses	0	0	0
Restaurants	0	0	0
Gasoline stations	1	0	0

2.5 Agriculture

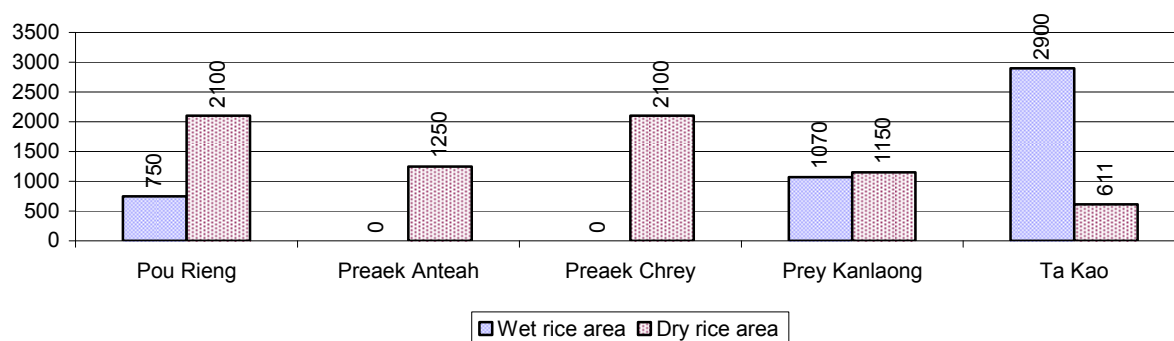
2.5.1 Rice cultivation in the District over 3 years

Description	2006	2007	2008
Total dry rice land area	6,892 ha	6,902 ha	7,211 ha
Actual dry rice cultivation area	6,892 ha	6,902 ha	7,211 ha
% actual cultivation to total land	100%	100%	100%
Total dry rice production	19,987 tonne(s)	20,016 tonne(s)	21,921 tonne(s)
Average dry rice yield	2.9 tonne(s)/ha	2.9 tonne(s)/ha	3.0 tonne(s)/ha
Total wet rice land area	4,720 ha	4,720 ha	4,720 ha
Actual wet rice cultivation area	3,919 ha	4,720 ha	4,720 ha
% actual cultivation to total land	83 %	100%	100%
Total wet rice production	7,838.00 tonne(s)	9,440.00 tonne(s)	10,226.67 tonne(s)
Average wet rice yield	2.0 tonne(s)/ha	2.0 tonne(s)/ha	2.2 tonne(s)/ha
Total intensive rice land area	176 ha	950 ha	683 ha
Actual intensive rice cultivation area	- ha	1,425 ha	1,243 ha
Average intensive rice yield	- tonne(s)/ha	1.5 tonne(s)/ha	1.9 tonne(s)/ha
Actual upland rice cultivation area	0 ha	0 ha	0 ha
Total upland rice production	- tonne(s)	- tonne(s)	- tonne(s)
Average upland rice yield	- tonne(s)/ha	- tonne(s)/ha	- tonne(s)/ha

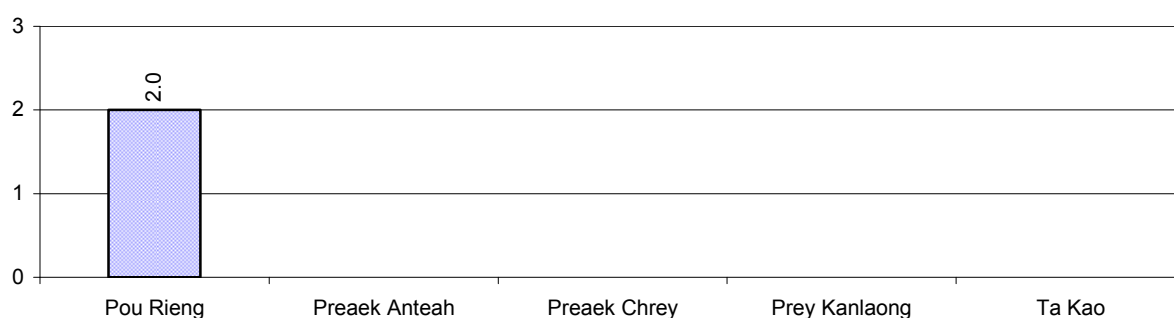
2.5.2 Estimated wet and dry Season Rice Yield in tonne(s)/Ha, by Commune, in 2008



2.5.3 Cultivated wet and dry Season Rice areas in Ha, by Commune, in 2008



2.5.4 Estimated intensive Rice Yields in tonnes/Ha, by Commune, for 2008



2.5.5 Estimated upland Rice Yield in tonnes/Ha, by Commune, for 2008

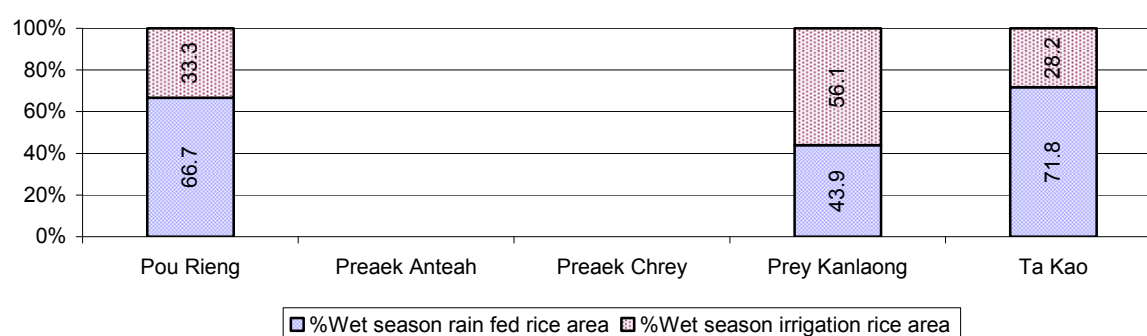
There were no estimated upland rice yields in this District in 2008

2.5.6 Wet season Rice irrigation across 3 years

Description		2006 %	2007 %	2008	
				%	Number
Total area of wet season rain fed rice land		47%	67%	65 %	3,051 ha
Percentage of wet season rice land that is irrigated; and for 2008 area in Ha		53 %	33 %	35 %	1,669 ha
Where	Area irrigated from canal/dam	59 %	67 %	69 %	1,150 ha
	Area irrigated from river, stream, lake, natural pond	0 %	5 %	5 %	79 ha
	Area irrigated from drilled well	41 %	28 %	26 %	440 ha
	Area irrigated from dug pond	0 %	0 %	0 %	0 ha

2.5.7 Water sources for wet Season Rice Cultivation, by Commune, in 2008

This chart shows the percentage of wet season rice cultivation receiving water from rain (natural) and from irrigation.



2.5.8 Access to Irrigation

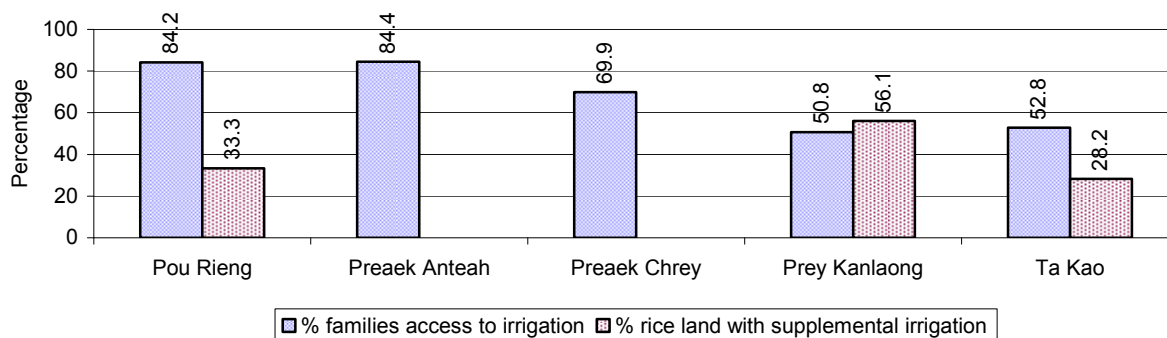
Description	2006 %	2007 %	2008	
			%	Number
Families who have access to irrigation water	69%	74%	70%	5,189 families
Families who have irrigation wells	13%	14%	16%	1,159 families

Note: Calculated against the total number of families are rice farmers

2.5.9 Number of Irrigation Wells over 3 years

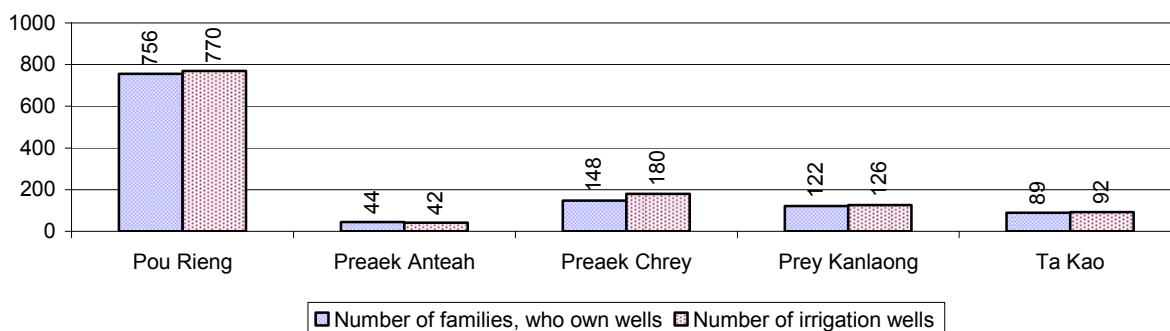
Description	2006	2007	2008
Number of irrigation wells	917 wells	1,042 wells	1,210 wells

2.5.10 Percentage of Families with access to (supplemental) Irrigation for wet Season Rice cultivation, by Commune, in 2008



Note: % of families, with access to irrigation is calculated against the total number of families, whose main occupation is rice farming. Irrigated wet rice land area is calculated against the total actual wet rice land cultivated areas

2.5.11 Irrigation Wells, by Commune, in 2008

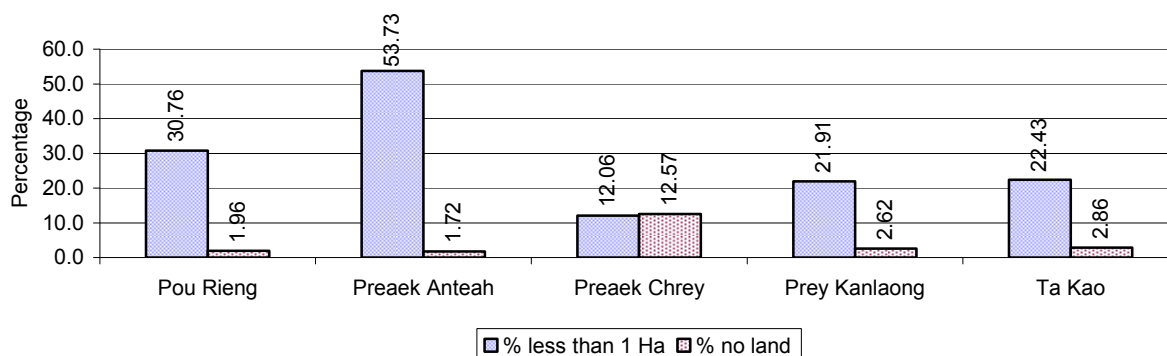


2.5.12 Farmers owning less than one hectare of Rice Land

Description	2006 %	2007 %	2008	
			%	Number
Families who have less than one hectare of rice land	33%	30%	29%	2,168 families
Families who do not own any rice land	3%	5%	4%	327 families

Note: Calculated on basis of total number of families who are rice farming

2.5.13 Percentage of Farmers with less than one Hectare or no Rice Land, by Commune, in 2008

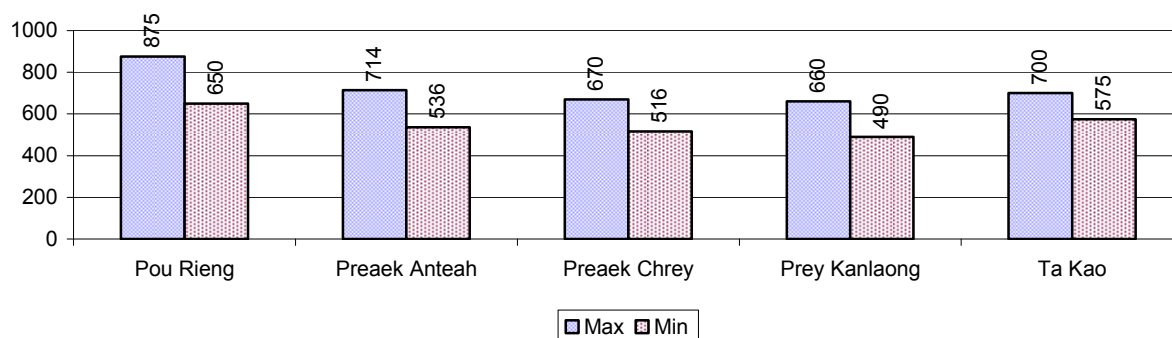


Note: Calculated on basis of total number of families who are rice farming

2.5.14 Average farm-gate Prices of Rice, over 3 years

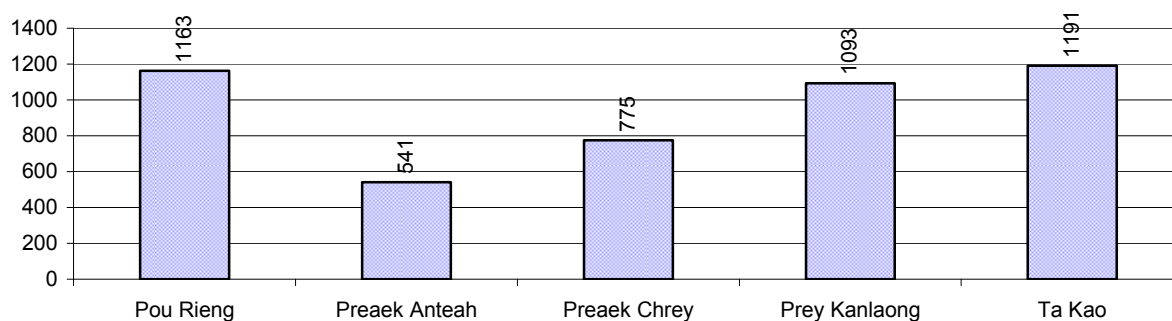
Description	2006	2007	2008
Maximum average farm gate price	509 Riels/Kg	656 Riels/Kg	724 Riels/Kg
Minimum average farm gate price	403 Riels/Kg	516 Riels/Kg	553 Riels/Kg
Average farm gate price	456 Riels/Kg	586 Riels/Kg	639 Riels/Kg
Average rice production per person	828 Kg/person	886 Kg/person	921 Kg/person

2.5.15 Minimum and maximum farm-gate Prices of Rice in Riel/kg, by Commune, in 2008



2.5.16 Production of Paddy in Kgs/Person, by Commune, in 2008

This table shows how much paddy (harvested rice) is produced in a year in a commune, in kgs per person.



2.5.17 Production of other Crops, over 3 years

Crops	2006	2007	2008
Corn cultivation area	0 ha	0 ha	0 ha
Estimated corn yield	- tonne(s)/ha	- tonne(s)/ha	- tonne(s)/ha
Estimated corn production	- tonne(s)	- tonne(s)	- tonne(s)
Soya bean cultivation area	0 ha	0 ha	0 ha
Estimated Soya bean yield	- tonne(s)/ha	- tonne(s)/ha	- tonne(s)/ha
Estimated Soya bean production	- tonne(s)	- tonne(s)	- tonne(s)
Mungbean cultivation area	0 ha	0 ha	0 ha
Estimated Mungbean yield	- tonne(s)/ha	- tonne(s)/ha	- tonne(s)/ha
Estimated Mungbean production	- tonne(s)	- tonne(s)	- tonne(s)

Crops	2006	2007	2008
Peanut cultivation area	0 ha	0 ha	0 ha
Estimated Peanut yield	- tonne(s)/ha	- tonne(s)/ha	- tonne(s)/ha
Estimated Peanut production	- tonne(s)	- tonne(s)	- tonne(s)
Cassava cultivation area	0 ha	0 ha	0 ha
Estimated Cassava yield	- tonne(s)/ha	- tonne(s)/ha	- tonne(s)/ha
Estimated Cassava production	- tonne(s)	- tonne(s)	- tonne(s)
Sweet potatoes cultivation area	0 ha	0 ha	0 ha
Estimated Sweet potatoes yield	- tonne(s)/ha	- tonne(s)/ha	- tonne(s)/ha
Estimated Sweet potatoes production	- tonne(s)	- tonne(s)	- tonne(s)
Sesame cultivation area	0 ha	0 ha	0 ha
Estimated Sesame yield	- tonne(s)/ha	- tonne(s)/ha	- tonne(s)/ha
Estimated Sesame production	- tonne(s)	- tonne(s)	- tonne(s)

2.5.18 Yields of Corn, Soya beans and Mungbeans in tonne(s)/ha, by Commune, in 2008

There were no yields for any of these crops in this District in 2008

2.5.19 Yields of Peanuts and Cassava in tonne(s)/ha by Commune, in 2008

There were no yields for any of these crops in this District in 2008

2.5.20 Yields of Sweet Potatoes and Sesame in tonne(s)/ha, by Commune, in 2008

There were no yields for any of these crops in this District in 2008

2.5.21 Percentage Farmers who own less than 1 Ha or no Chamkar land

Description	2006 %	2007 %	2008	
			%	Number
Families, who own less than 1ha of Chamkar land	-%	-%	-%	0 families
Families, with no Chamkar land	-%	-%	-%	0 families

Note 1: Calculated as a percentage of the total number of families whose main occupation is Chamkar (not rice) farming

Note 2: Chamkar land is no-rice land, i.e. other crops

2.5.22 Percentage Farmers owning less than 1 ha or no Chamkar land, by Commune, in 2008

There were no Farmers owning less than 1 ha or no Chamkar land in this District in 2008

Note: Percentage is calculated among families, who Chamkar farm as a main occupation, not the total population of the commune.

2.5.23 Percentage of Families raising Cattle/Buffalo, over 3 years

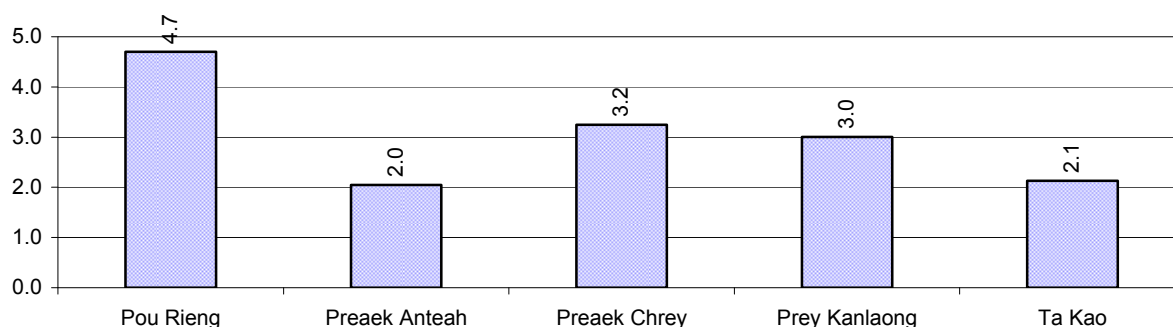
Description	2006 %	2007 %	2008	
			%	Number
Families raising cattle/buffalo	47%	45%	46%	3,499 families
Families raising cattle/buffalo as labor forces	34%	31%	26%	1,971 families

Note: Calculated against the total number of families.

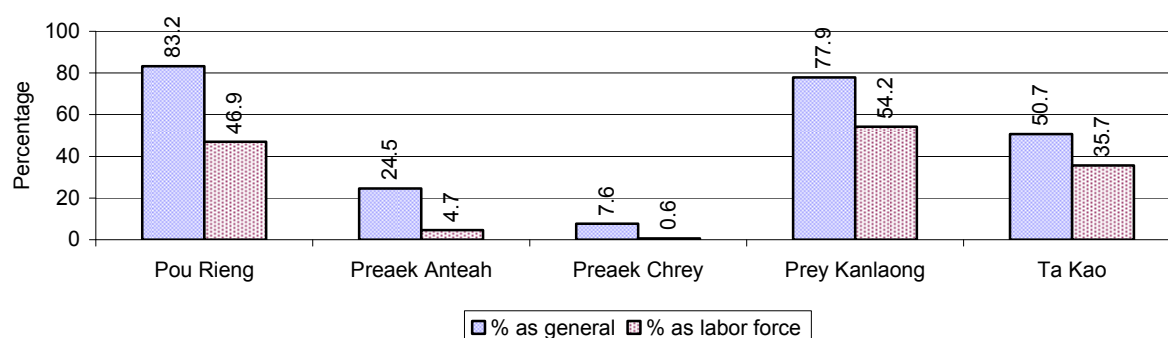
2.5.24 Number of Cattle/buffalo being raised, over 3 years

Description	2006	2007	2008
Total number of cattle/buffalo	11,645 head(s)	11,671 head(s)	11,650 head(s)
Average cattle/buffalo per families	3.4 head(s)/families	3.5 head(s)/families	3 head(s)/families

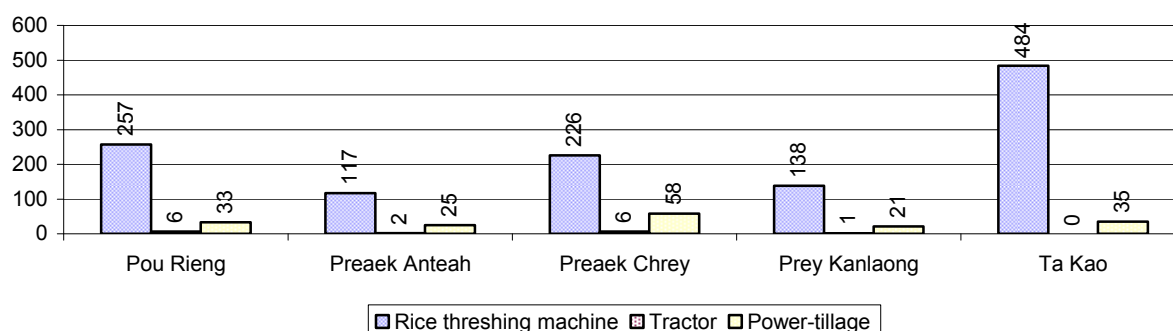
Note: Calculated by dividing total number of cattle/buffalo by total number of cattle/buffalo raising families

2.5.25 Average number of Cattle/Buffalo per Family, by Commune, in 2008

Note: Calculated by dividing total number of cattle/buffalo by total number of cattle/buffalo raising families

2.5.26 Percentage Families raising Cattle/Buffalo, for general and labor purposes in 2008, by Commune

Note: Calculated using the total number of families raising cattle/buffalo against the total number of families.

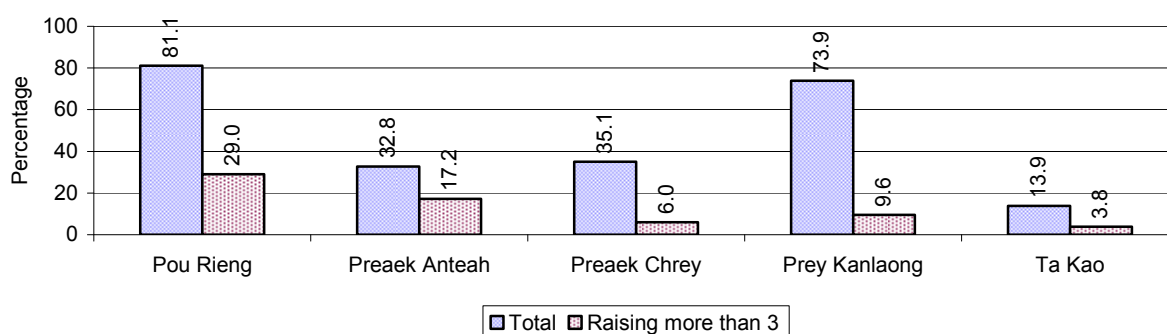
2.5.27 Type and number of agricultural Machines, by Commune, in 2008

2.5.28 Livestock-producing Households over 3 years

Description	2006 %	2007 %	2008	
			%	Number
Total number of families raising pigs	52%	49%	46%	3,487 families
number of families raising more than 3 pigs	15%	14%	14%	1,025 families
Total number of families raising chickens	86%	89%	92%	6,976 families
number of families raising more than 3 chickens	68%	70%	73%	5,508 families
Total number of families raising ducks	10%	8%	6%	461 families
number of families raising more than 5 ducks	8%	6%	5%	401 families
Total number of families raising goats or sheep	0%	0%	0%	12 families
Total number of families raising horses	0%	0%	0%	15 families

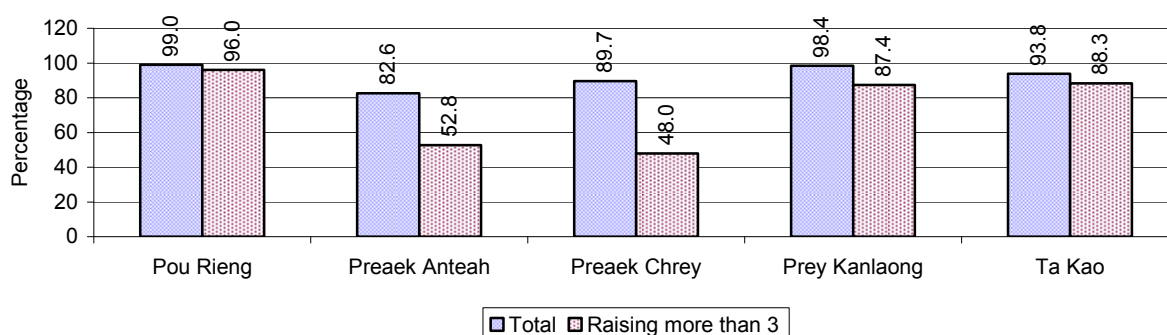
Note: Calculated against the total number of families

2.5.29 Percentage Families raising Pigs, by Commune, in 2008



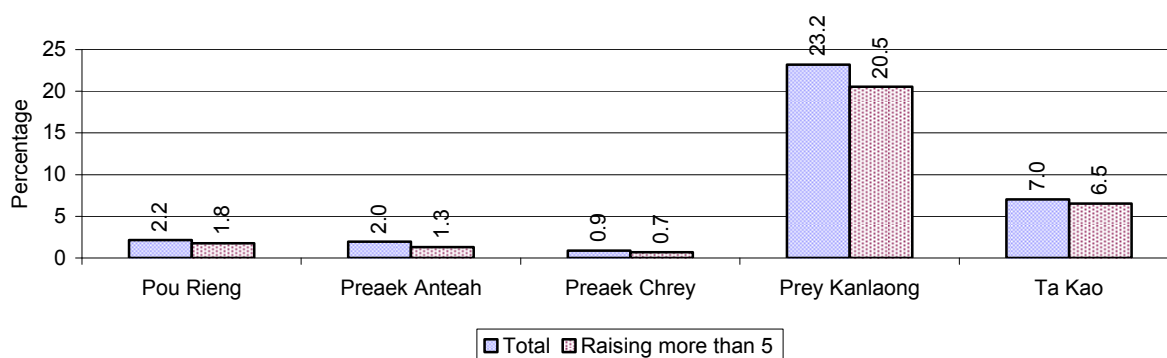
Note: Calculated against the total number of families in the commune

2.5.30 Percentage Families raising Chickens, by Commune, in 2008



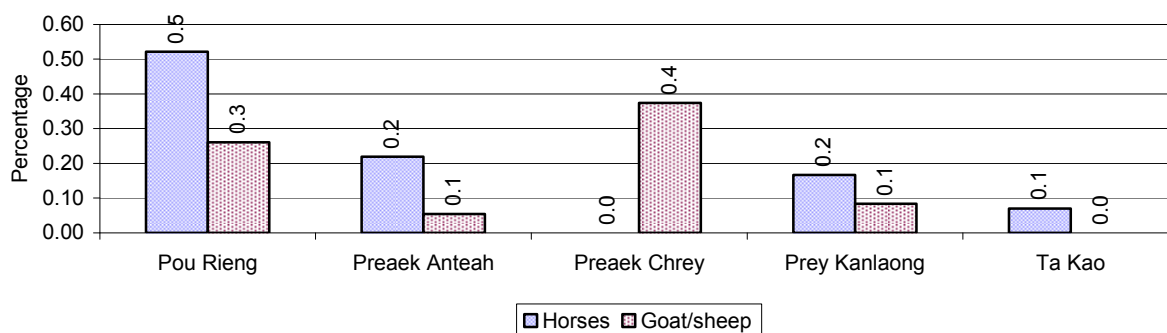
Note: Calculated against the total number of families in the commune

2.5.31 Percentage Families raising Ducks, by Commune, in 2008



Note: Calculated against the total number of families in the commune

2.5.32 Percentage Families raising Horses, Goats or Sheep, by Commune, in 2008



Note: Calculated against the total number of families in the commune

2.5.33 Livestock Farms over 3 years

Description	2006	2007	2008
Number of cattle/buffalo farms	0 farm(s)	0 farm(s)	0 farm(s)
Number of pig farms	0 farm(s)	0 farm(s)	0 farm(s)
Number of goat/sheep farms	0 farm(s)	0 farm(s)	0 farm(s)
Number of chicken farms	0 farm(s)	0 farm(s)	0 farm(s)
Number of duck farms	0 farm(s)	0 farm(s)	0 farm(s)

2.5.34 Number Livestock Farms, by Commune in 2008

There were no farms of this type in this District in 2008

Note: Number of farms are recorded by the village chief, not by counting number of livestock in each farm

2.5.35 Number Chicken and Duck Farms, by Commune, for 2008

There were no farms of this type in this District in 2008

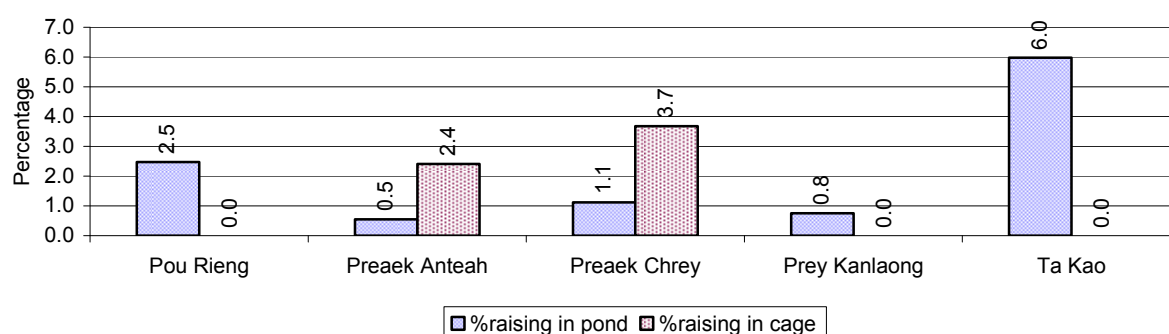
Note: Number of farm places recorded by village chief, not by counting number of livestock in each farm

2.5.36 Families raising Fish over 3 years

Description	2006	2007	2008
Total number of families raising fish	197 families	229 families	263 families
% families raising fish	3%	3%	3%
Number families raising fish in pond	131 families	133 families	160 families
% families raising fish in pond	2%	2 %	2%
Number fish pond	134 pond(s)	151 pond(s)	167 pond(s)
No. of ponds per family	1.0 pond/families	1.1 pond/families	1.0 pond/families
Number of families raising fish in cage	66 families	96 families	103 families
%families raising fish in cage	1 %	1 %	1%
Number of fish cage	66 cage(s)	96 cage(s)	103 cage(s)
No. of fish cage per family	1.0 cage /families	1.0 cage /families	1.0 cage /families

Note: % of families raising fish or fish in ponds or cages is calculated a percentage of the total number of families.

2.5.37 Percentage of Families raising Fish, by Commune, in 2008



Note: Calculated as a percentage of the total number of families in the commune.

2.5.38 Shrimp and Prawn Farming over 3 years

Description	2006	2007	2008
Number of families raising shrimps	0 families	0 families	0 families
% Families raising shrimps	0%	0%	0%
Number of shrimp ponds	0 pond	0 pond	0 pond
Total area raising shrimps	0 ha	0 ha	0 ha
Area per family	-ha/families	-ha/families	-ha/families
Number of families raising prawns	1 families	0 families	0 families
% families raising prawns	0%	0%	0%
Number prawn ponds	1 pond	0 pond	0 pond
Ponds per families	1 pond/families	-pond/families	-pond/families
Number of prawn cages	0 cage	0 cage	0 cage
Cages per families	0 cage /families	0 cage /families	0 cage /families

Note: Percentage of families raising either prawns or shrimp is calculated against the number of families, who do aquaculture farming, NOT the total population.

2.5.39 Numbers of Families raising Shrimps and number of Shrimp Ponds, by Commune, in 2008

There were none of these in this District in 2008

2.5.40 Number of Families raising Prawn and Number of Prawn Ponds/Cages, by Commune, in 2008

There were none of these in this District in 2008

3 Social Aspects

3.1 Education

3.1.1 Kindergarten in the District over 3 years

Description	2006	2007	2008
Number of community kindergarten schools	0 school(s)	0 school(s)	0 school(s)
Number of community kindergarten class rooms	0 room(s)	0 room(s)	0 room(s)
Number of community kindergarten classes	0 class(es)	0 class(es)	0 class(es)
Number of community kindergarten teachers	0 person(s)	0 person(s)	0 person(s)
Number of women community kindergarten teachers	0 women	0 women	0 women
Number of state and private kindergarten schools	4 school(s)	6 school(s)	6 school(s)
Number of state and private kindergarten class rooms	4 room(s)	5 room(s)	6 room(s)
Number of state and private kindergarten classes	5 class(es)	6 class(es)	6 class(es)
Number of state and private kindergarten teachers	6 person(s)	6 person(s)	6 person(s)
Number of women state and private kindergarten teachers	5 women	6 women	6 women

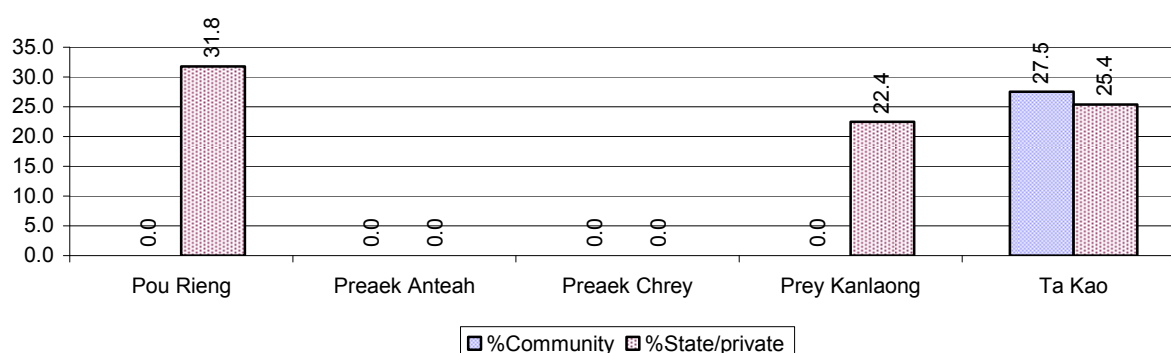
3.1.2 Percentage enrolment at Kindergarten level over 3 years

This table shows the percentage of the total 3-5 year old population attending kindergarten.

Description	2006 %	2007 %	2008	
			%	Number
Total percentage of children, 3-5 yrs, go to kindergarten	15%	17%	16%	452 person(s)
Percentage of children, 3-5 yrs, go community kindergarten	2%	4%	4%	104 person(s)
Percentage children, 3-5 yrs, go state/private kindergarten	13%	13%	13%	348 person(s)

Note: Calculated against the total for that age group

3.1.3 Percentage of Children 3-5 yrs attending Kindergarten, by Commune, in 2008



3.1.4 Basic Education over 3 years

Primary School

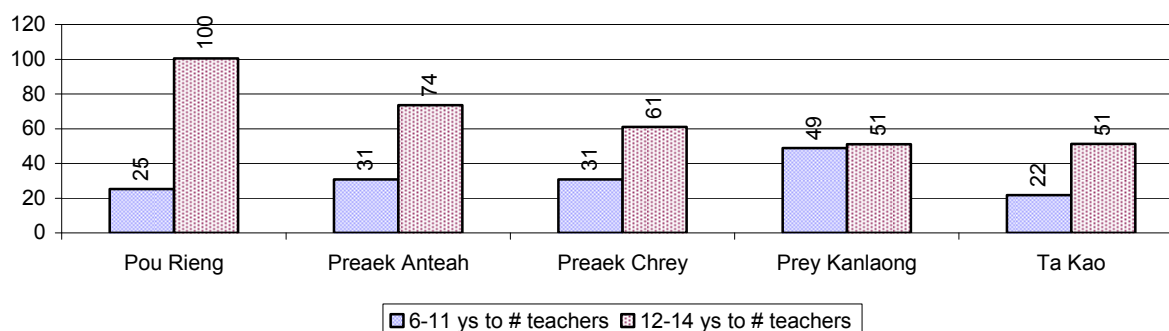
Description	2006	2007	2008
Number of primary schools	20 school(s)	21 school(s)	21 school(s)
Number of primary school rooms	153 room(s)	158 room(s)	158 room(s)
Number of primary classes	177 class(es)	183 class(es)	173 class(es)
Number of primary teachers	152 person(s)	165 person(s)	156 person(s)
Ratio of children 6-11 yrs to school	248	230	218
Ratio of children 6-11 yrs to school room	32	31	29
Ratio of children 6-11 yrs to class	28	26	26
Ratio of children 6-11 yrs to teacher	33	29	29

Note: According to education norm, children 6-11 yrs should attend primary school, while 12-14 yrs should be in lower secondary school, but in reality this varies.

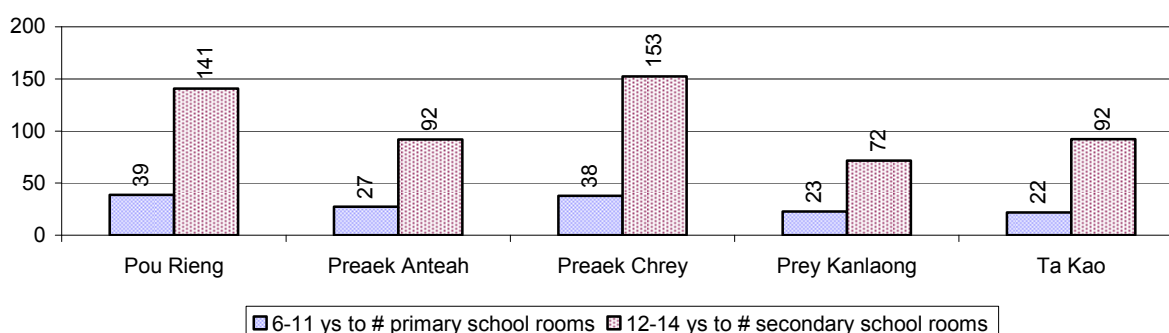
Lower Secondary School

Description	2006	2007	2008
Number of lower secondary schools	4 school(s)	4 school(s)	5 school(s)
Number of lower secondary school rooms	21 room(s)	22 room(s)	27 room(s)
Number of lower secondary classes	21 class(es)	25 class(es)	29 class(es)
Number of lower secondary teachers	30 person(s)	35 person(s)	43 person(s)
Ratio children 12-14 yrs to school	683	681	573
Ratio of children 12-14 yrs to school room	130	124	106
Ratio of children 12-14 yrs to class	130	109	99
Ratio of children 12-14 yrs to teacher	91	78	67

3.1.5 Ratio of 6-11 year old and 12-14 year old Children to number of Teachers, by Commune, in 2008



3.1.6 Ratio of 6-11 year old and 12-14 year old Children to number of School Rooms, by Commune, in 2008



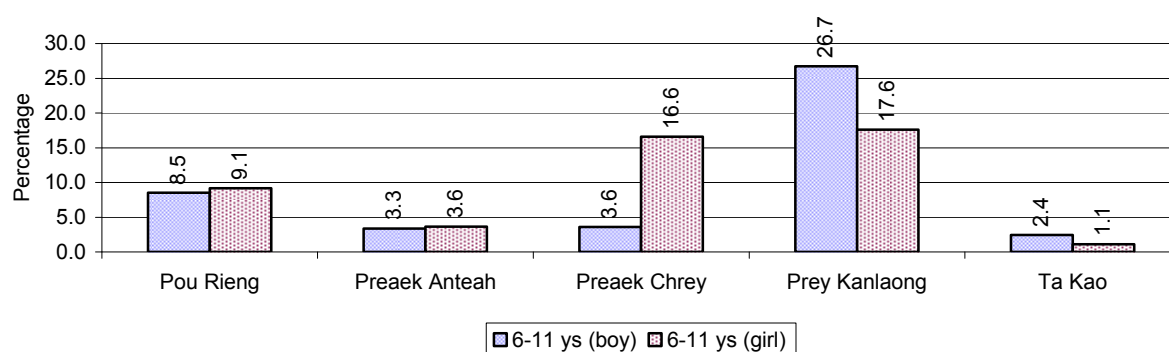
3.1.7 Enrolment status at Primary Level over 3 years

Description	2006 %	2007 %	2008	
			%	Number
Total children aged 6-11 years old	15%	14%	13%	4,572 person(s)
Total children aged 6-11 who are in school	92%	96%	91%	4,181 person(s)
Total children aged 6-11 who are not in school	8%	4%	9%	391 person(s)
Total girls aged 6-11 years old	14%	14%	12%	2,330 person(s)
Total girls aged 6-11 who are in school	92%	95%	91%	2,115 person(s)
Total girls aged 6-11 who are not in school	8%	5%	9%	215 person(s)
Total boys aged 6-11 years old	15%	14%	13%	2,242 person(s)
Total boys aged 6-11 who are in school	92%	96%	92%	2,066 person(s)
Total boys aged 6-11 who are not in school	8%	4%	8%	176 person(s)

Note 1: Percentage is calculated on the basis of the total number of children within 6-11 year age group for the first 3 rows and for the total girls and the total boys aged 6-11 yrs.

Note 2: Number of girls aged 6-11 who are in & not in school is calculated against the total number of girls aged 6-11 yrs. Number boys, 6-11 yrs who are in & not in school are calculated against the total number of boys aged 6-11 yrs.

3.1.8 Percentage of 6-11 year old Children not in School, by Commune, in 2008



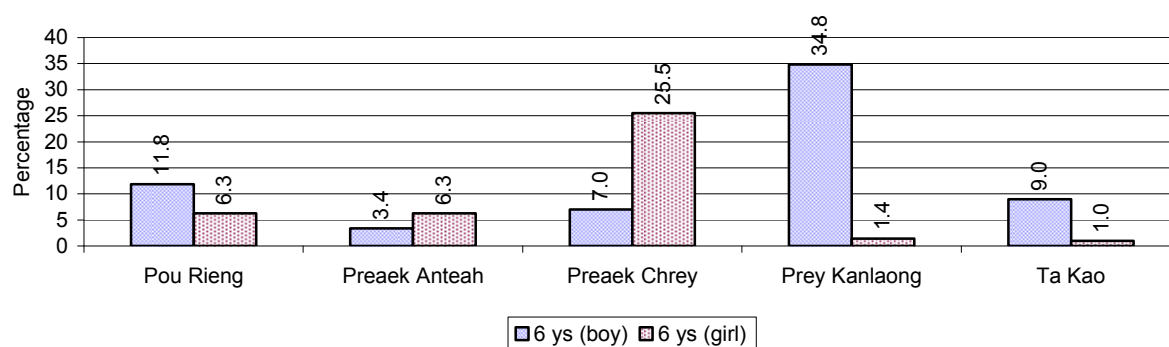
Note: calculated on the basis of the total number of children within 6-11 year age group in the commune.

3.1.9 Enrolment of 6 year old Children over 3 years

Description	2006 %	2007 %	2008	
			%	Number
Total % and number of children aged 6 years old	4%	4%	4%	1,295 person(s)
Total % of children aged 6 years old in school	92%	94%	87%	1,126 person(s)
Total % of children aged 6 years old not in school	8%	6%	13%	169 person(s)

Note: First row calculated as a percentage of total population. Second and third row calculated as a percentage of the total number of 6 year olds.

3.1.10 Percentage of 6 year old Children not in School, by Commune, in 2008



Note: Calculated as a percentage of total 6 year old population

3.1.11 Number of 5 year old Children in each Commune in 2008

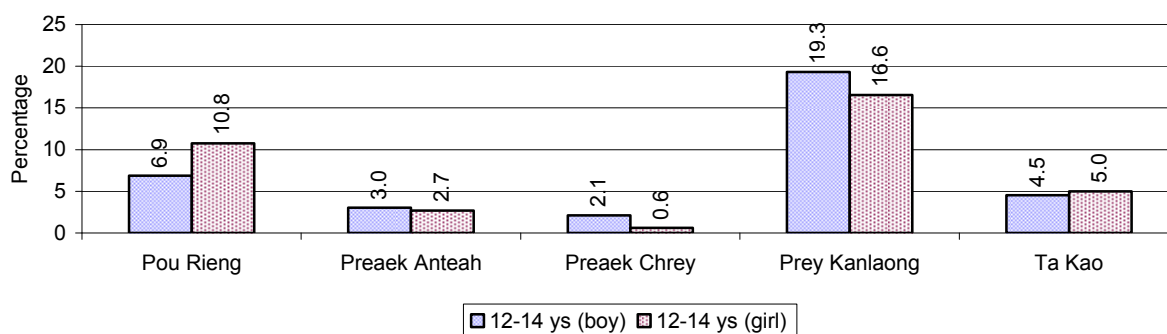


3.1.12 Enrolment at Lower Secondary Level over 3 years

Description	2006 %	2007 %	2008	
			%	Number
Total children aged 12-14 years old	8%	8%	8%	2,867 person(s)
Children aged 12-14 years old in school	88%	92%	94%	2,689 person(s)
Children aged 12-14 years old not in school	12%	8%	6%	178 person(s)
Total girls aged 12-14 years old	8%	8%	8%	1,442 person(s)
Girls aged 12-14 years old in school	87%	90%	94%	1,355 person(s)
Girls aged 12-14 years old not in school	13%	10%	6%	87 person(s)
Total boys aged 12-14 years old	8%	8%	8%	1,425 person(s)
Boys aged 12-14 years old in school	90%	95%	94%	1,334 person(s)
Boys aged 12-14 years old not in school	10%	5%	6%	91 person(s)

Note: Percentage is calculated on the basis of number of the total number of children within 12-14 yrs group, except for the first row of each section which is calculated on the basis of the total population.

3.1.13 Percentage of 12-14 year olds not in School, by Commune, in 2008



Note: Calculated as a percentage of the total 12-14 year old population in each commune

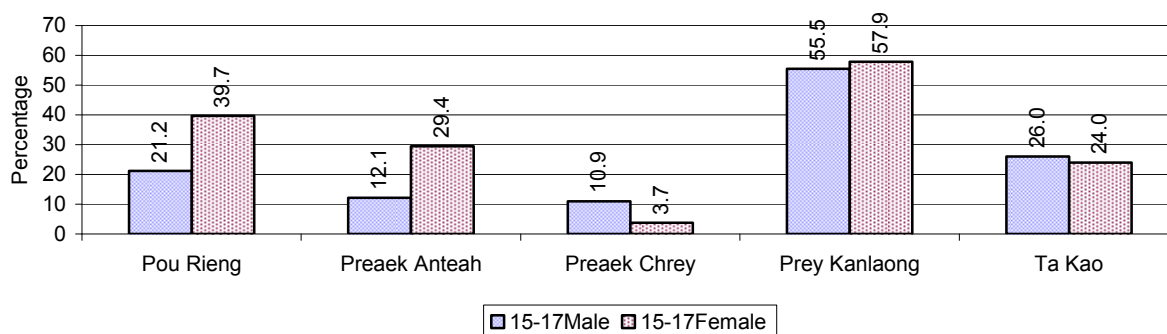
3.1.14 Upper Secondary Schools over 3 years

Description	2006	2007	2008
Number of upper secondary schools	0 school(s)	0 school(s)	0 school(s)
Number of upper secondary school rooms	0 room(s)	0 room(s)	0 room(s)
Number of upper secondary classes	0 class(es)	0 class(es)	0 class(es)
Number of upper secondary teachers	0 person(s)	0 person(s)	0 person(s)
Ratio of 15-17 yr olds to number of school	N/A	N/A	N/A
Ratio of 15-17 yr olds to number of school room	N/A	N/A	N/A
Ratio of 15-17 yr olds to number of classes	N/A	N/A	N/A
Ratio of 15-17 yr olds to number of teacher	N/A	N/A	N/A

3.1.15 Enrolment of 15-17 year old teenagers over 3 years

Description	2006	2007	2008
Number of teenage, 15-17 years old	2,789 person(s)	2,718 person(s)	2,930 person(s)
Number of teenage, 15-17 years old, who are not studying	889 person(s)	848 person(s)	749 person(s)
Percentage of teenage, 15-17 years old not studying	32%	31%	26%

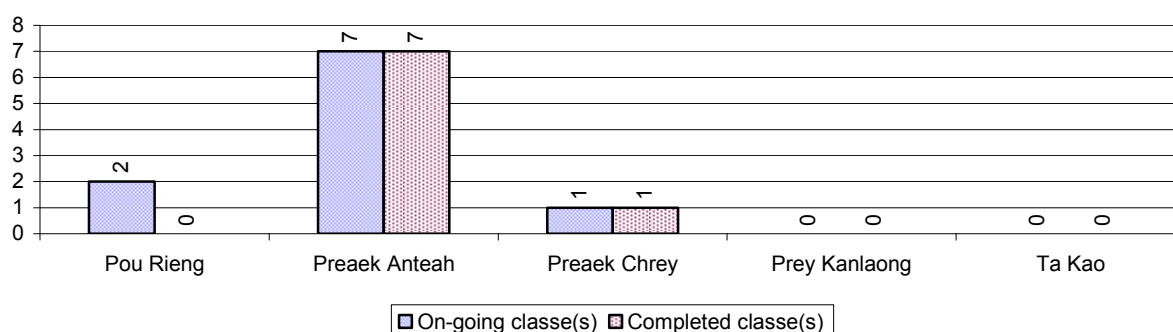
3.1.16 Percentage of 15-17 year old Teenagers not at School, by Commune, in 2008



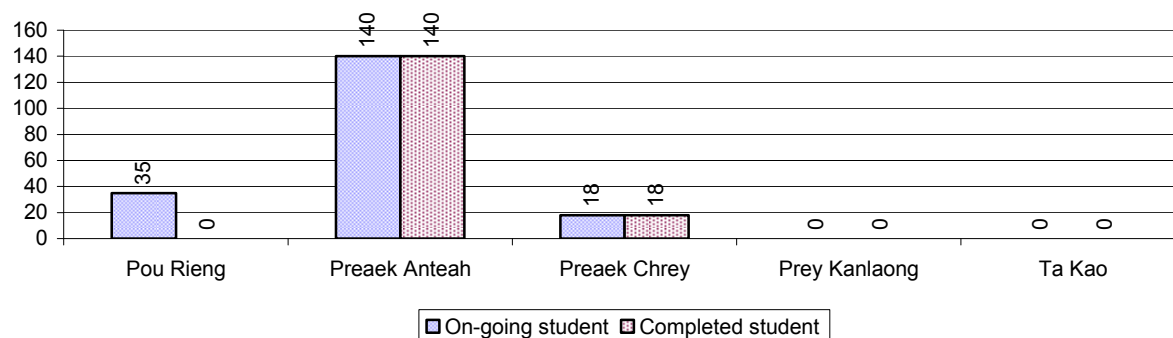
3.1.17 Literacy Classes as of 2008

Literacy classes	Organized by:		Other Program(s)	Total
	PDoEYS	NGOs		
Number of On-going literacy classes	10 class(es)	0 class(es)	0 class(es)	10 class(es)
Number of literacy students in on-going classes	193 person(s)	0 person(s)	0 person(s)	193 person(s)
Completed literacy class(es)	8 classes	0 classes	0 classes	8 classes
Number of literacy students that have completed literacy classes	158 person(s)	0 person(s)	0 person(s)	158 person(s)
Number of students that passed	136 person(s)	0 person(s)	0 person(s)	136 person(s)

3.1.18 Number of on-going and completed Literacy Classes, by Commune, in 2008



3.1.19 Students of on-going & completed Literacy Classes, by Commune, in 2008

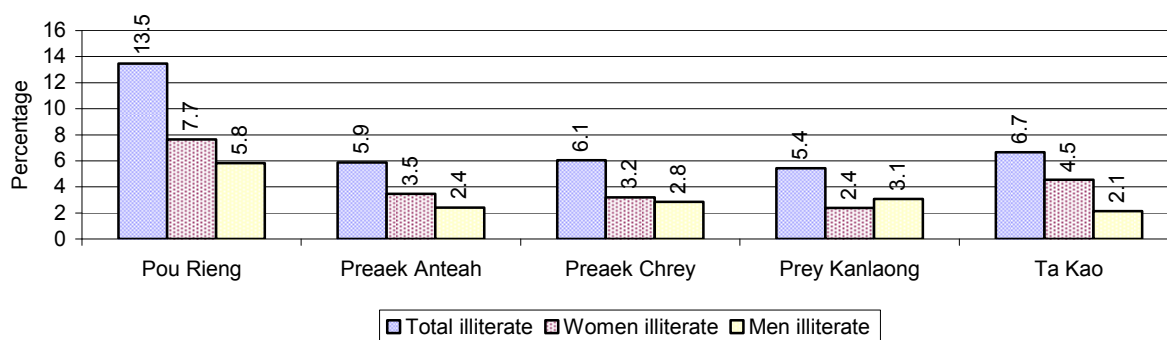


3.1.20 Percentage of illiterate People between 15-60, over 3 years

Illiteracy Status	2006 %	2007 %	2008	
			%	Number
Illiterate people, 15-60 years old	9%	9%	8%	1,702 person(s)
Illiterate females, 15-60 years old	5%	5%	4%	968 person(s)
Illiterate people, 15-17 years old	5%	5%	4%	111 person(s)
Illiterate females, 15-17 years old	2%	3%	2%	55 person(s)
Illiterate people, 18-24 years old	6%	6%	6%	283 person(s)
Illiterate females, 18-24 years old	3%	4%	3%	163 person(s)
Illiterate people, 25-60 years old	12%	11%	9%	1,308 person(s)
Illiterate females, 25-60 years old	7%	6%	5%	750 person(s)

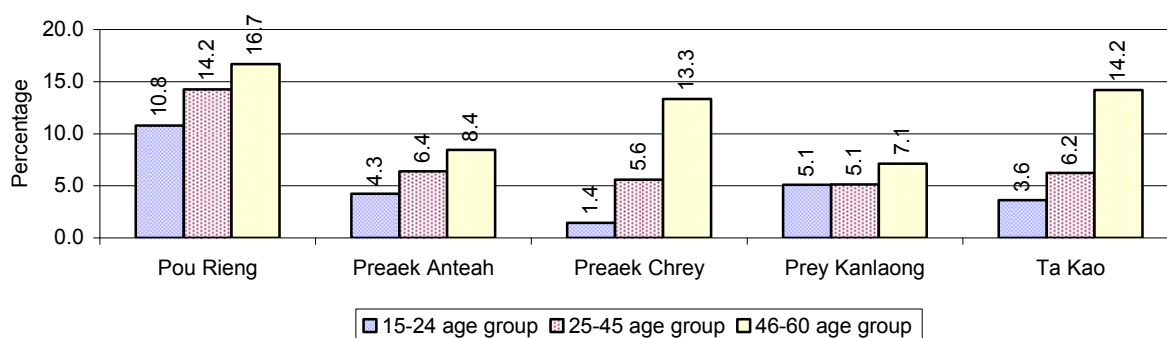
Note: Percentage is calculated on the basis of number of people in age each group.

3.1.21 Percentage illiterate People among 15-60 yrs old, by Commune, in 2008



Note: Percentages are calculated on the basis of number of people in that age group.

3.1.22 Percentage illiterate People for 15-24 yrs, 25-45 yrs and 46-60 yrs, by Commune, in 2008



Note: Percentage of illiterate people in each age group is calculated on the basis of number of people in that age group.

3.2 Health

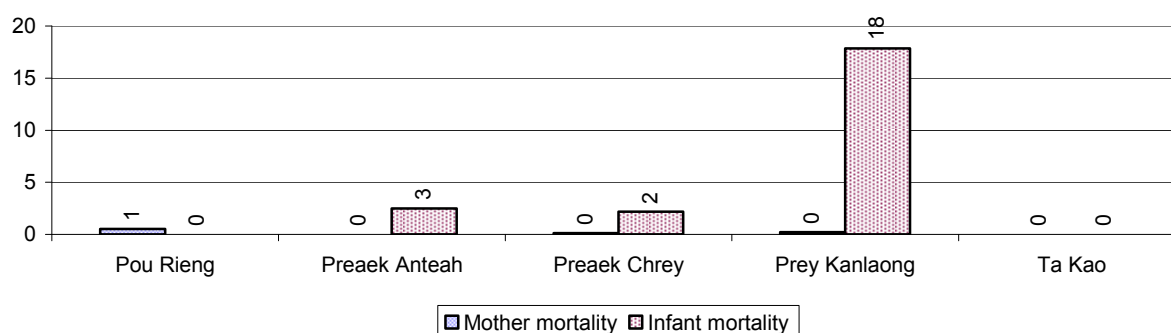
3.2.1 Health Situation of Women and Children, over 3 years

Description	2006	2007	2008
Number families with a birth during the year	446 families	388 families	404 families
Number of women who had their baby delivered by a TBA	203 person(s)	151 person(s)	115 person(s)
Percentage of women who had their baby delivered by a TBA	46 %	39 %	28 %
Number of women who had their baby delivered by a midwife	243 person(s)	237 person(s)	289 person(s)
Percentage of women had their baby delivered by a midwife	54 %	61 %	72 %
Number of mothers who died within 1 month of giving birth	2 person(s)	1 person(s)	4 person(s)
Mothers who died within 1 month of giving birth per 100,000 families having a delivery	448	258	990
Number of infants born during the year	446 person(s)	389 person(s)	404 person(s)
Number of Infants who died within 1 month	7 person(s)	3 person(s)	7 person(s)

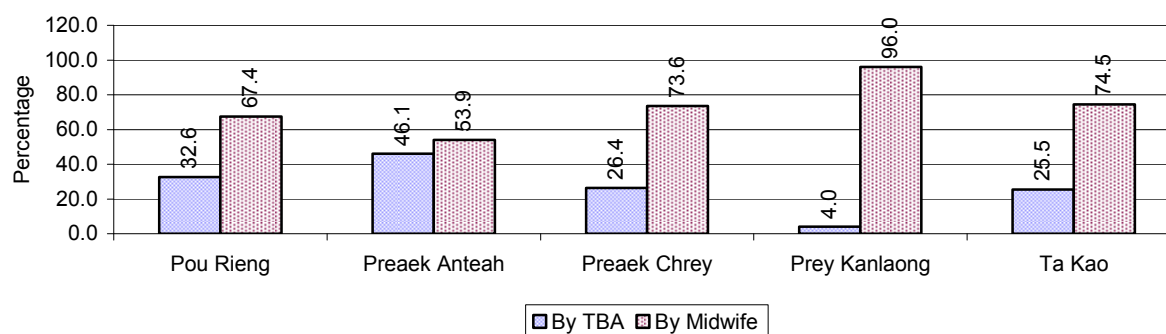
Description	2006	2007	2008
Infants mortality within 1 month per 1,000 births	16	8	17
Number of children who died below the age of 5.	12 person(s)	23 person(s)	5 person(s)
Number of infants, aged 9-12 months, born during the year	196 person(s)	186 person(s)	223 person(s)
Nr. infants, aged 9-12 months, not receiving full immunization	3 person(s)	19 person(s)	25 person(s)
% of 9-12 months infants, not receiving full immunization	2 %	10 %	11 %

Note: TBA = Traditional Birth Attendant

3.2.2 Mothers dying within 0 days to 1 month of giving Birth and Infants dying within 1 month in 2008, by Commune

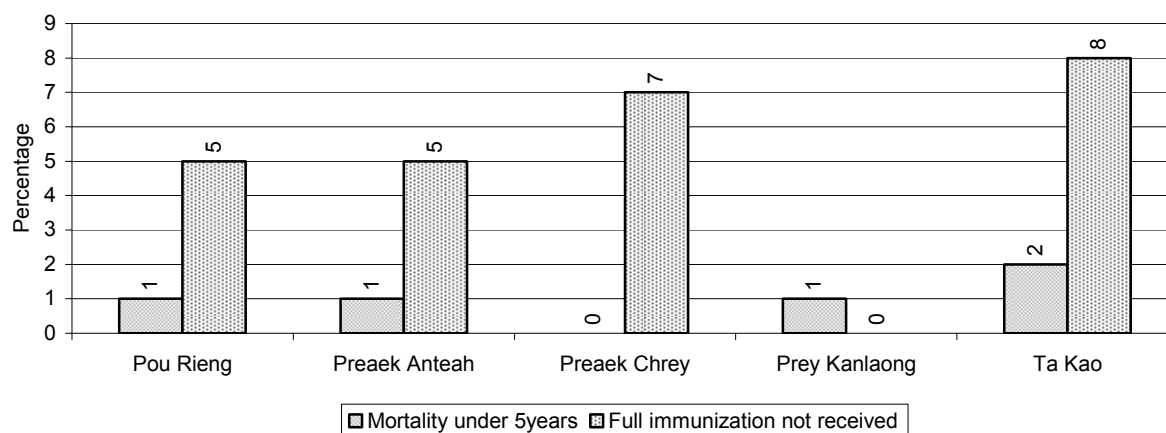


3.2.3 Percentage of Women delivering with a TBA or Midwife, by Commune



Note: Calculated as a percentage of total deliveries

3.2.4 Percentage of Children dying below 5 & of 9-12 months not receiving full Immunization, by Commune, in 2008



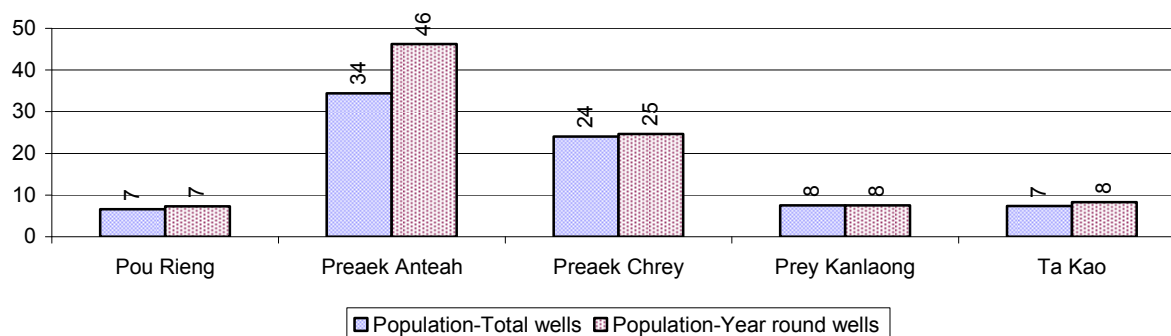
Note: Mortality rate calculated as a percentage of the total 5 year old population. Lack of immunization received calculated as a percentage of the total number 9-12 months olds there are

3.3 Water and Sanitation

3.3.1 Number of different types of Wells over 3 years

Type of wells	Number of wells by year		
	2006	2007	2008
<i>Total number of pumped or mixed wells</i>	3,263	2,949	3,325
Year-round usable pumped or mixed wells	2,921	2,686	3,060
Dry season unusable pump or mixed wells	342	263	265
Pump or mixed wells needing repair/rehabilitation	191	105	103
<i>Total number of ring wells</i>	8	8	10
Year-round usable ring wells	4	4	6
Dry season unusable ring wells	4	4	4
Ring wells needing repair/rehabilitation	4	4	4
<i>Total number of unprotected dug wells</i>	10	10	10
Year-round usable unprotected dug wells	10	10	10
Dry season unusable unprotected dug wells	0	0	0

3.3.2 Ratio of People to Wells, by Commune, in 2008



Note: Year-round wells excluding unprotected wells

3.3.3 Potable Ponds over 3 years

Type of Pond	2006	2007	2008
Total number of normal-type ponds	0 pond	0 pond	0 pond
Year-round usable normal-type ponds	0 pond	0 pond	0 pond
Dry season unusable normal-type ponds	0 pond	0 pond	0 pond
Normal-type ponds needing repair/rehabilitation	0 pond	0 pond	0 pond
Total number of filter ponds	0 pond	0 pond	0 pond
Year-round usable filter ponds	0 pond	0 pond	0 pond
Filter ponds, dry season unusable	0 pond	0 pond	0 pond
Filter ponds needing repair/rehabilitate	0 pond	0 pond	0 pond

3.3.4 Ratio of People to normal Ponds, by Commune in 2008

in this District in 2008

3.3.5 Ratio of People to Filter Ponds, by Commune, in 2008

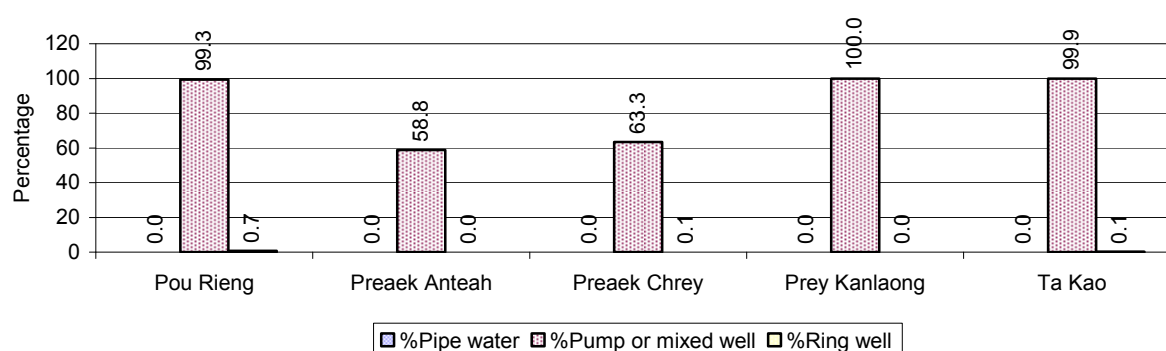
in this District in 2008

3.3.6 Source of potable Water for Households, over 3 years

Water sources	2006 %	2007 %	2008	
			%	Number
Families using water from purification system	0%	0 %	0 %	0 families
Families using water from pump, mixed wells	77%	80 %	82 %	6,231 families
Families using water from ring wells and open dug wells	0%	0 %	0 %	13 families
Families using water from pond	0%	0 %	0 %	0 families
Families using water from rain water storage	0%	0 %	0 %	1 families
Families using water from rivers, lakes, natural ponds and reservoirs	23%	20 %	18 %	1,337 families

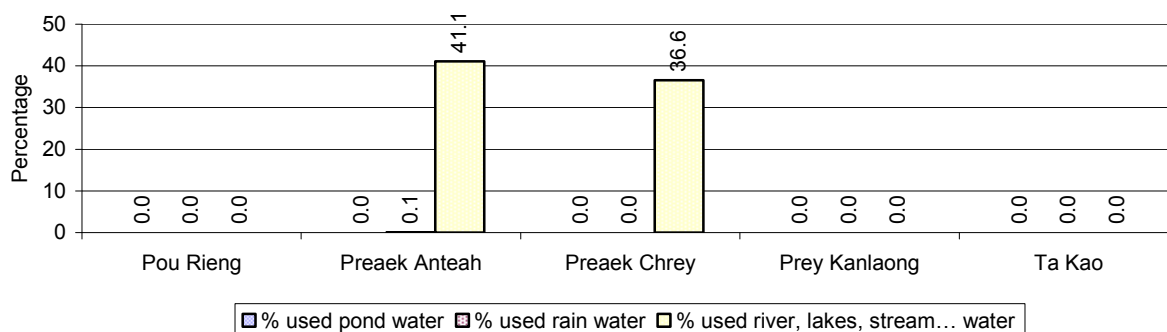
Note: Calculated as a percentage of the total number of families.

3.3.7 Percentage Families using different Water Sources, by Commune, in 2008



Note: Calculated as a percentage of the total number of families in each commune

3.3.8 Percentage Families using Water from Rain Water Storage, Ponds and natural Sources (rivers/lakes/natural ponds/reservoirs), by Commune, 2008



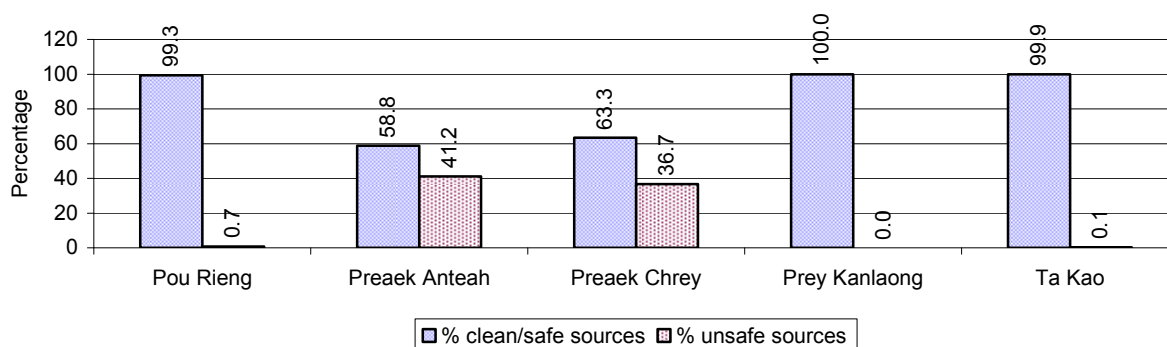
Note: Calculated as a percentage of the total number of families in each commune

3.3.9 Drinking Water Sources in the dry Season over 3 years

Percentage Families that get drinking water from:	2006	2007	2008	
	%	%	%	Number
from clean/safe sources	79 %	80 %	82 %	6,231 families
from unsafe sources	21 %	20 %	18 %	1,351 families

Note: Calculated as a percentage of the total number of families.

3.3.10 Percentage Families using safe and unsafe Water Sources in the dry Season, by Commune, in 2008



Note: Calculated as a percentage of the total number of families in each commune.

3.3.11 Drinking Water Purification by Households, over 3 years

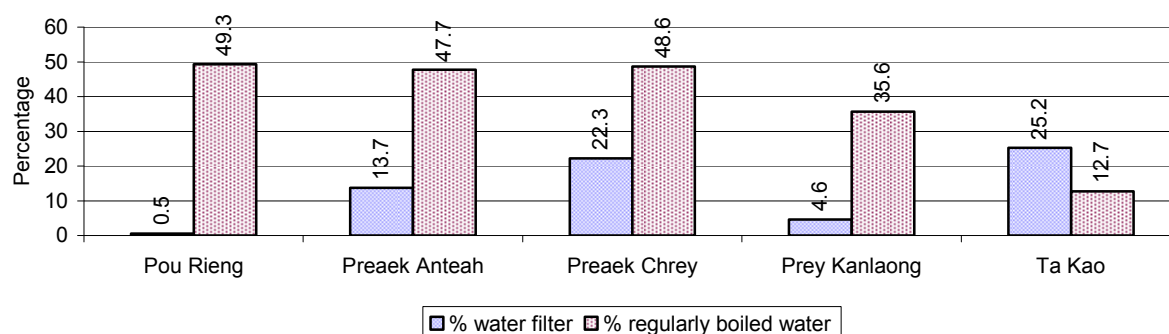
This table shows the different ways families make water safe for drinking.

Families, who:	2006	2007	2008	
	%	%	%	Number
Filter water for drinking	9%	10%	14 %	1,029 families
Boil water for drinking	48%	40%	40 %	3,015 families

Note: Calculated as a percentage of the total number of families

3.3.12 Percentage Families filtering Water or regularly boiling Water, by Commune, in 2008

This graph shows the different ways families make drinking water safe.



Note: Calculated on as a percentage of the total number of families in each commune.

3.3.13 Families' access to Water, over 3 years

Families access to water	2006	2007	2008	
	%	%	%	Number
Families with water at home or in less then 150m	71%	75%	80 %	6,033 families
Families with water 150m or more away from home	6%	4%	3 %	211 families

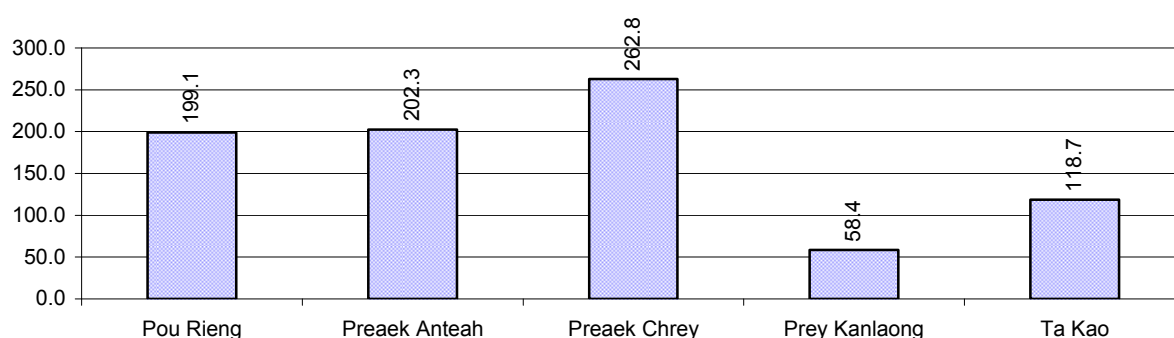
Note: Calculated as a percentage of the total number of families

3.3.14 Ratio of people to Latrines over 3 years

Description	2006	2007	2008	
	Ratio	Ratio	Ratio	Number
Ratio of people to latrines	201.4	210.0	138.9	261.0

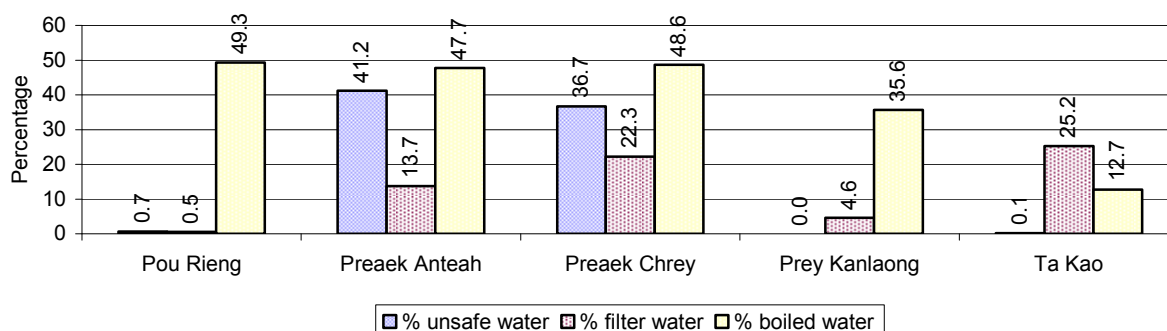
Note: Ratio calculated by dividing the number of houses with latrines by the total population

3.3.15 Ratio of People to Latrines, by Commune, in 2008



Note: Ratio calculated by dividing the number of houses with latrines by the total population in a Commune.

3.3.16 Percentage of Families drinking boiled, filtered or unsafe Water, by Commune, in 2008



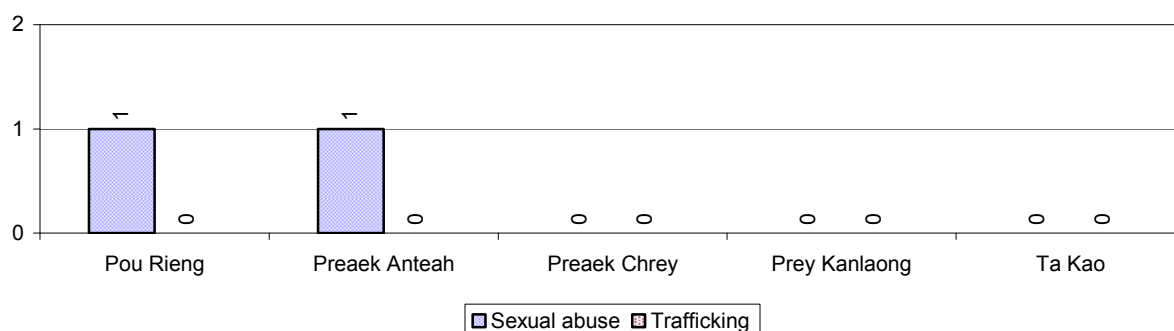
Note: Calculated as a percentage of the total number of families in each commune.

3.4 Vulnerable groups

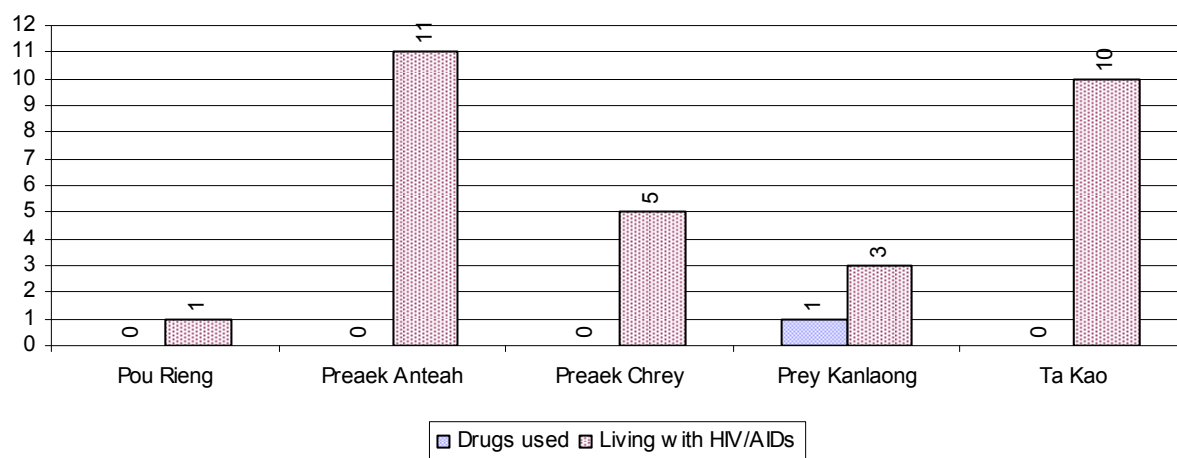
3.4.1 Vulnerable Groups in need of special Protection over 3 years

Vulnerable groups	2006	2007	2008
Victims of sexual abuse	0 person(s)	1 person(s)	2 person(s)
Victims of human trafficking	0 person(s)	0 person(s)	0 person(s)
Families with family member(s) using drugs	5 families	1 families	1 families
Families with family member(s) living with HIV/AIDS	31 families	26 families	30 families
Children under 18 yrs old whose parent died of AIDS	28 person(s)	28 person(s)	34 person(s)
Orphaned/abandoned children under 18 yrs old (all cases)	59 person(s)	49 person(s)	34 person(s)
Elderly persons without guardian	36 person(s)	23 person(s)	18 person(s)
Disabled people able to earn an income	29 person(s)	18 person(s)	16 person(s)
Disabled people unable to earn an income	18 person(s)	21 person(s)	20 person(s)
Disabled people under 18 yrs old	12 person(s)	11 person(s)	5 person(s)
Victims of natural disasters	52 families	28 families	15 families
Victims of land mines and unexploded weapons	0 person(s)	0 person(s)	0 person(s)

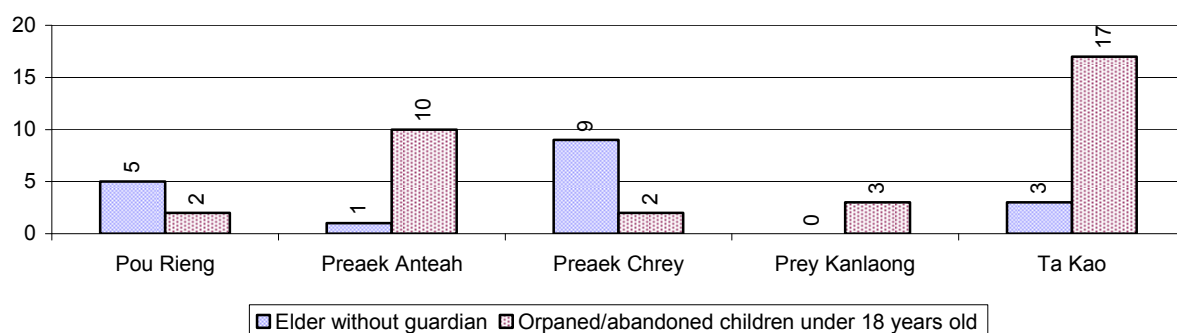
3.4.2 Registered Victims of sexual Abuse or Trafficking, by Commune, for 2008



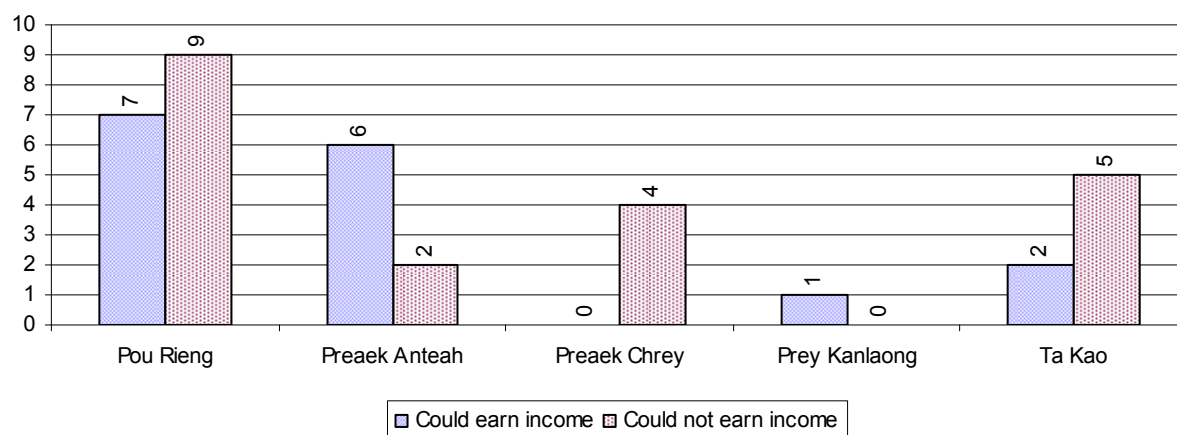
3.4.3 Registered Families with Member(s) using Drugs or living with HIV/AIDS, by Commune, for 2008



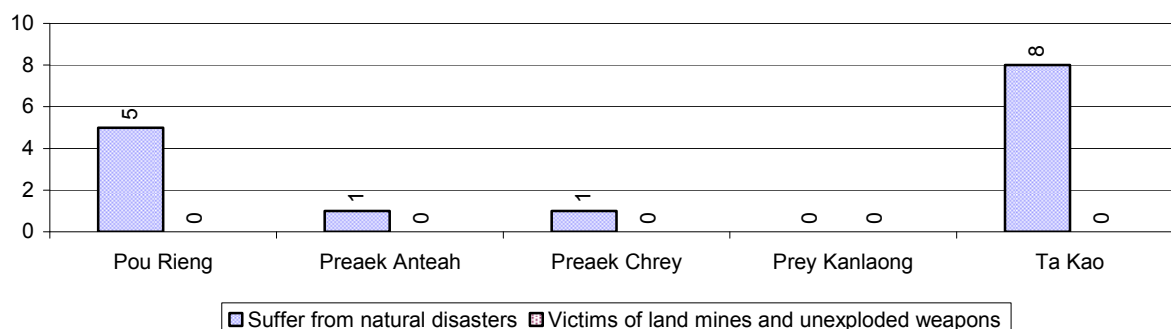
3.4.4 Elderly Persons without a Guardian and orphaned/abandoned Children under 18 years old, by Commune, for 2008



3.4.5 Number of disabled People who could or could not earn an Income, by Commune, for 2008



3.4.6 Number of Families who suffered from natural Disasters, and number of Victims of Land Mines and unexploded Weapons, by Commune, in 2008



3.5 Migration

3.5.1 Migration over 3 years

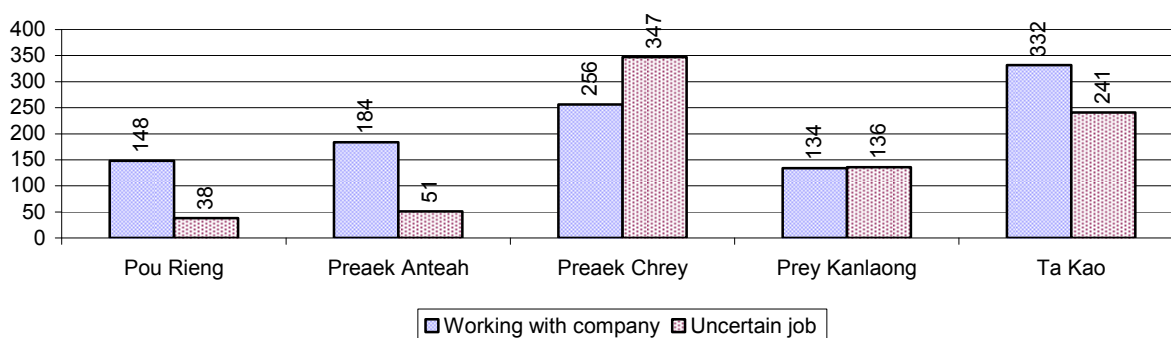
Description	2006	2007	2008
Number of families permanently in-migrated	families	42 families	3 families
Total number of people	107 person(s)	60 person(s)	10 person(s)
Total number of female	55 person(s)	32 person(s)	7 person(s)
Number of families permanently out-migrated	53 families	23 families	7 families
Total number of people	266 person(s)	92 person(s)	25 person(s)
Total number of female	126 person(s)	49 person(s)	14 person(s)
Number of families staying temporarily	8 families	13 families	0 families
Total number of people	42 person(s)	56 person(s)	0 person(s)
Total number of female	24 person(s)	34 person(s)	0 person(s)

3.5.2 Job Migration

Description	2006	2007	2008
Number of people migrated to work with company/factory	5%	5%	5%
Number of people migrated to work, but have uncertain jobs	5%	5%	4%

Note: Calculated as a percentage of the total population of 18-60 year olds

3.5.3 Number of People working outside their home Villages in a Company/Factory or with an uncertain Job in 2008

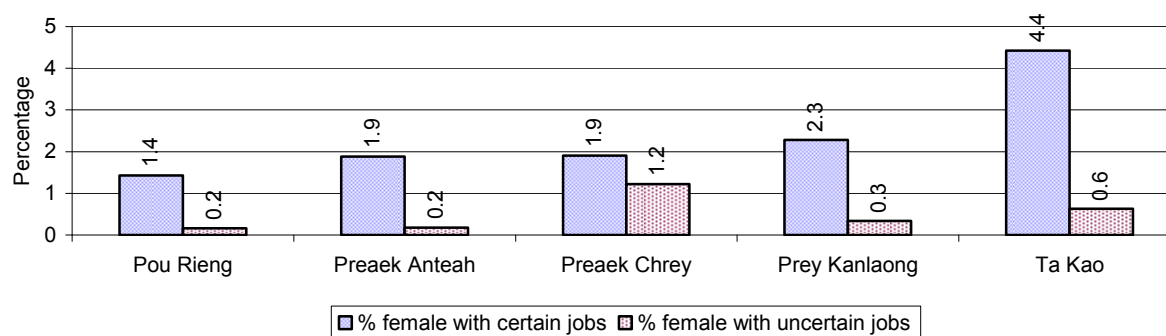


3.5.4 Female migration over 3 years

Description	2006 %	2007 %	2008	
			%	Number
Total number of migrants	5.1%	5.5%	5.1%	1,867 person(s)
Number of female migrants	2.7%	2.7%	2.8%	1,031 person(s)
Total number of migrants, who go to work with company/factory (with certain jobs)	2.7%	2.7%	2.9%	1,054 person(s)
Number of female migrants with certain jobs	2.2%	2.1%	2.3%	839 person(s)
Total number of migrants with uncertain jobs	2.4%	2.8%	2.2%	813 person(s)
Number of female migrants with uncertain jobs	0.6%	0.6%	0.5%	192 person(s)

Note: Calculated as a percentage of the total population

3.5.5 Percentage female Migrants with certain and uncertain Jobs, by Commune, in 2008



Note: Calculated as a percentage of the total population of the commune

4 Natural Resources and Environment (NRE)

4.1 Families involved with NRE issues over 3 years

Description	2006 %	2007 %	2008	
			%	Number
Families living with forest by products	0 %	0 %	0 %	0 families
Families living in a protected area	0 %	0 %	0 %	0 families
Houses with access to garbage collection service	0 %	0 %	0 %	0 families
Families affected by environmental pollution	0 %	0 %	0 %	7 families
Families using chemical fertilizer	93 %	91 %	95 %	7,187 families
Families using chemical pesticide	92 %	91 %	93 %	7,085 families

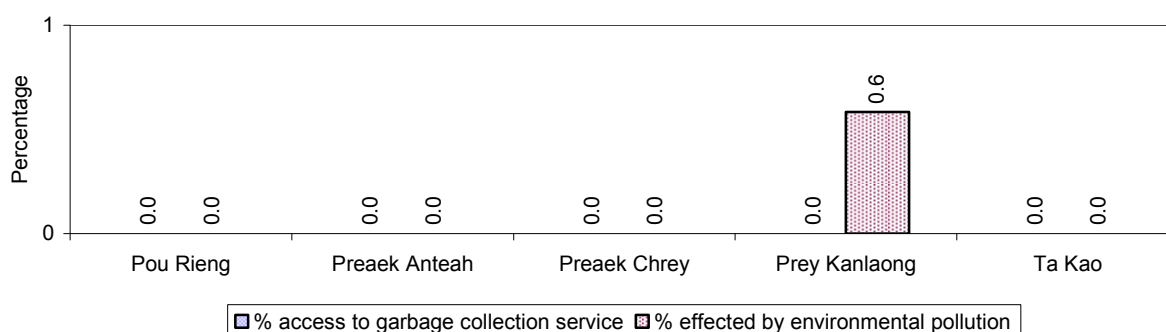
Note: Calculated as a percentage of the total number of families

4.2 Percentage of Families involved with Natural Resource issues, by Commune, for 2008

There were no families involved with natural resource issues in this District in 2008

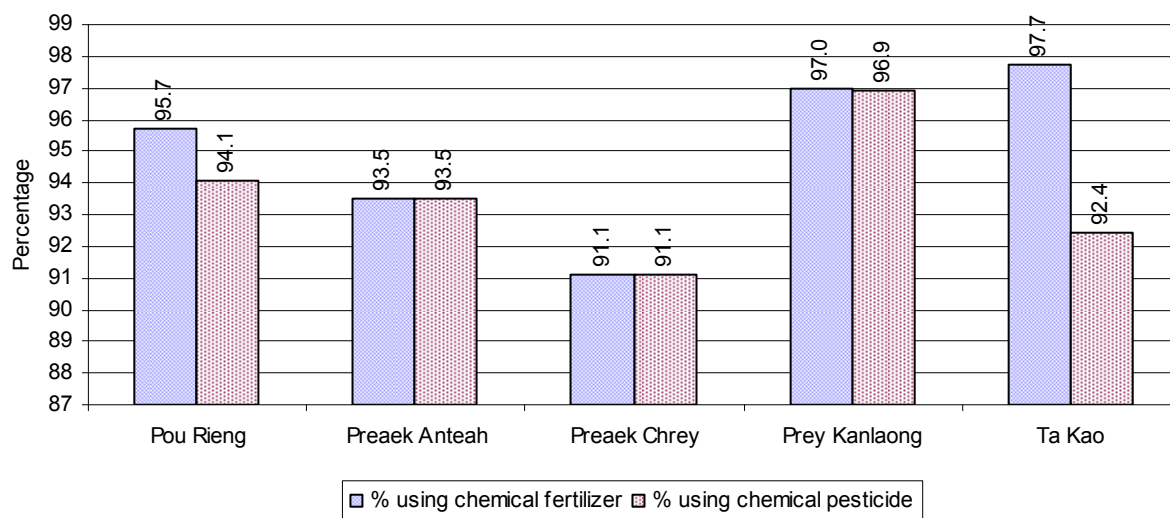
Note: Calculated as a percentage of the number of families in each commune

4.3 Percentage Houses with access to Garbage collection and Families affected by environmental Pollution, by Commune, for 2008



Note: Garbage collection is calculated as a percentage of the total number of houses in each commune and families affected by environmental pollution is calculated as a percentage of the total number of families in each commune.

4.4 Percentage Families using chemical Fertilizer and chemical Pesticides, by Commune, for 2008



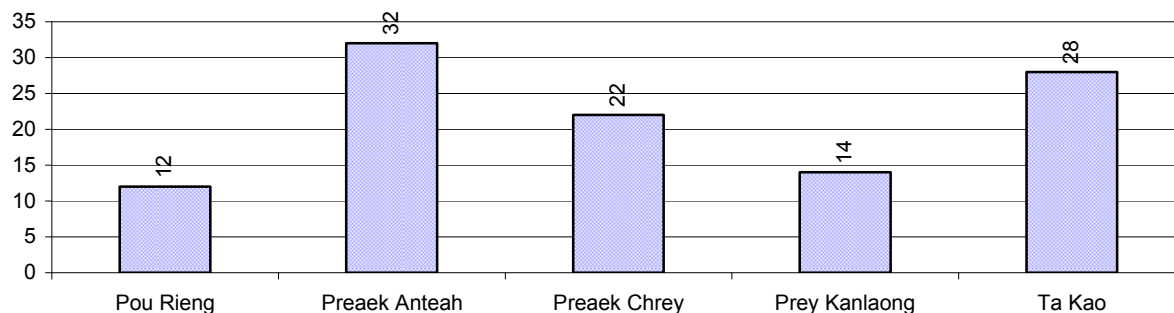
Note: Calculated as a percentage of the total number of families in each commune

5 Administration and Security

5.1 Birth Registration across 3 years

Description	2006	2007	2008
Number of infants to be registered	439 person(s)	386 person(s)	397 person(s)
Number of unregistered infants the year	113 person(s)	108 person(s)	108 person(s)
Percentage of infants unregistered	26 %	28 %	27 %

5.2 Number of unregistered Infants born in 2008, by Commune

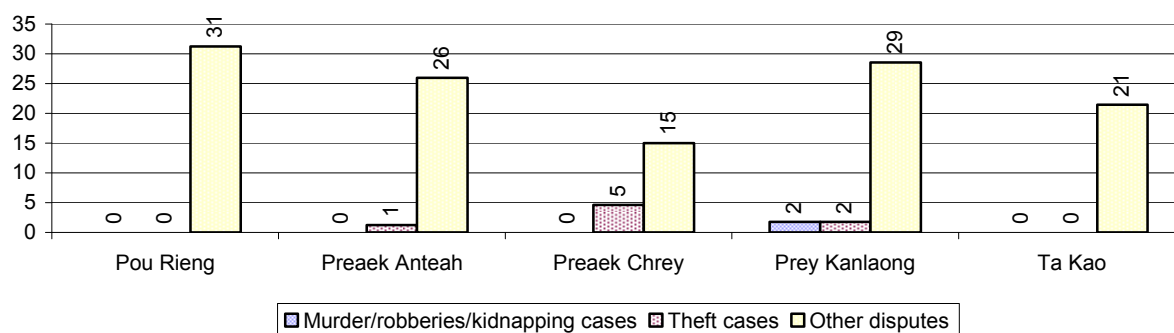


5.3 Registered criminal Cases over 3 years

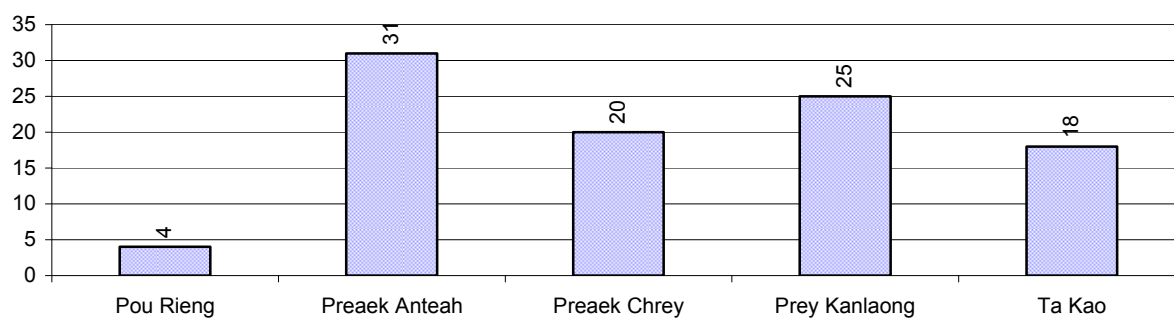
Description	2006	2007	2008
Murders, robberies and kidnapping cases	1 case(s)	1 case(s)	1 case(s)
Theft cases	20 case(s)	19 case(s)	6 case(s)
land dispute cases	117 case(s)	86 case(s)	98 case(s)
Other disputes cases	112 case(s)	94 case(s)	87 case(s)

Note: this reflects only registered criminal cases

5.4 Registered criminal Cases per 10,000 people, by Commune, for 2008



5.5 Number of registered Land Disputes, by Commune, in 2008

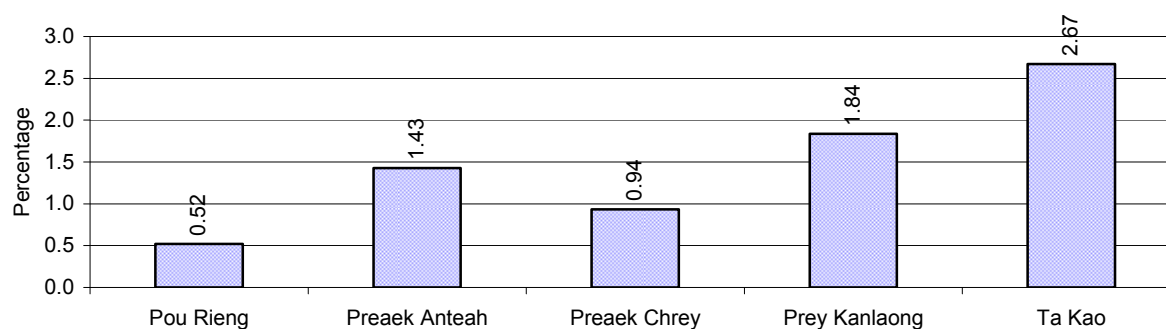


6 Gender

6.1 Registered Domestic Violence over 3 years

Description		2006	2007	2008
Families experiencing domestic violence		113 families	97 families	109 families(s)
% families experiencing domestic violence		2 %	1 %	1 %
Domestic violence cases reported by village chiefs		83 case(s)	132 case(s)	62 case(s)
Type	Physical violence	73 case(s)	53 case(s)	28 case(s)
	Sexual violence	1 case(s)	20 case(s)	3 case(s)
	Mental violence	4 case(s)	38 case(s)	22 case(s)
	Household economic violence	5 case(s)	21 case(s)	9 case(s)
Number of administrative decisions on domestic violence		10 case(s)	112 case(s)	52 case(s)
% of administrative decisions on domestic violence		12 %	85 %	84 %

6.2 Percentage of registered cases of Families experiencing domestic Violence, by Commune, in 2008



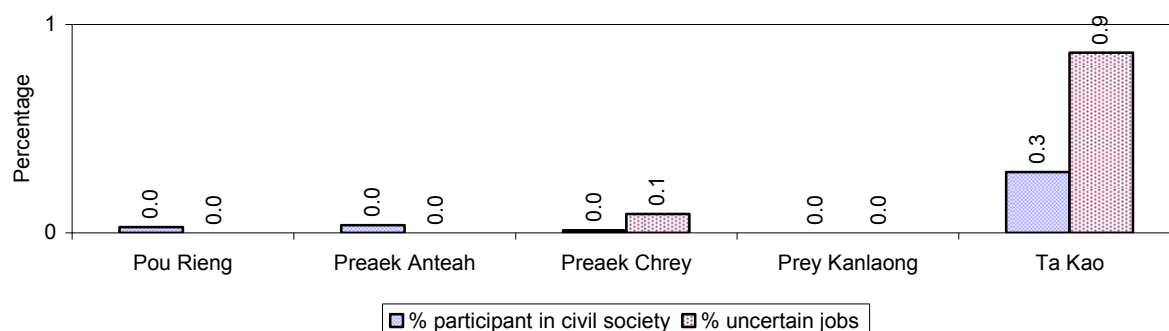
Note: Calculated as a percentage of the total number of families in each commune

6.3 Women's involvement over 3 years

Description	2006 %	2007 %	2008	
			%	Number
People participating in civil society	0%	0%	0%	73 person(s)
Women participating in civil society	0%	0%	0%	25 person(s)
People, 18-60 yrs, with uncertain/irregular jobs	0%	0%	0%	57 person(s)
Women, 18-60 yrs, with uncertain/irregular jobs	0%	0%	0%	37 person(s)

Note: Participation can be in NGOs, CBOs, credit groups, women's unions, parties and other civil society organizations. The first section is calculated as a percentage of the total population. The second section is calculated as a percentage of the total 18-60 year old population.

6.4 Percentage of Female Participants in Civil Society and of 18-60 year women with uncertain Jobs, by Commune, in 2008



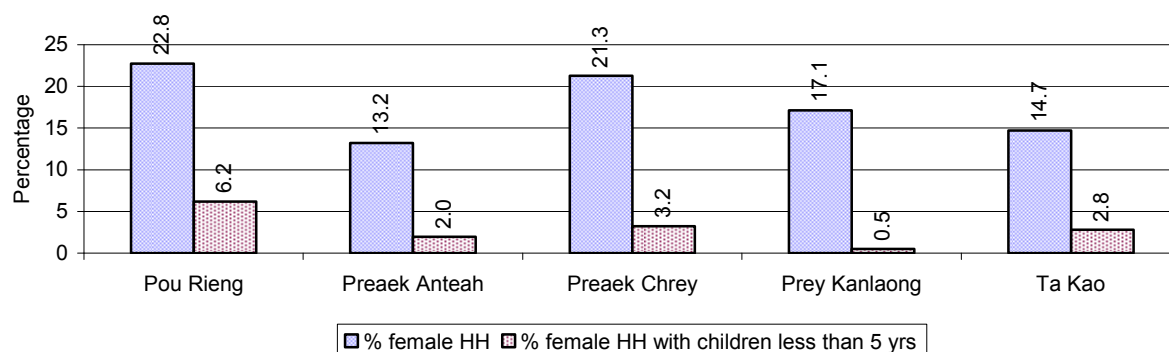
Note: Percentage of female participants in civil society is calculated as a percentage of the total population per commune. The percentage of 18-60 years old women with uncertain jobs is calculated as a percentage of the total 18-60 year old population per commune.

6.5 Female-headed Households over 3 years

Families with:	2006	2007	2008	
	%	%	%	Number
Households in which a woman is the family head	18%	17%	18%	1,345 families
Households in which a woman is the family head with children of less than 5 yrs	4%	3%	3%	229 families

Note: Calculated as a percentage of the total number of families

6.6 Percentage female-headed Households and with Children of less than 5 years old, by Commune, in 2008



Note: Calculated as a percentage of the total number of families in each commune
HH: Headed Household

7 Indigenous People in the District

7.1 Ethnic Minorities in the District over 3 years

Race of indigenous	2006		2007		2008	
	# families	# population	# families	# population	# families	# population
Phnong	0 families	0 person(s)	0 families	0 person(s)	0 families	0 person(s)
Kouy	0 families	0 person(s)	0 families	0 person(s)	0 families	0 person(s)
Stieng	0 families	0 person(s)	0 families	0 person(s)	0 families	0 person(s)
Mil	0 families	0 person(s)	0 families	0 person(s)	0 families	0 person(s)
Kroal	0 families	0 person(s)	0 families	0 person(s)	0 families	0 person(s)
Thmorn	0 families	0 person(s)	0 families	0 person(s)	0 families	0 person(s)
Khaonh	0 families	0 person(s)	0 families	0 person(s)	0 families	0 person(s)
Tompouonn	0 families	0 person(s)	0 families	0 person(s)	0 families	0 person(s)
Charay	0 families	0 person(s)	0 families	0 person(s)	0 families	0 person(s)
Kroeung	0 families	0 person(s)	0 families	0 person(s)	0 families	0 person(s)
Kavet	0 families	0 person(s)	0 families	0 person(s)	0 families	0 person(s)
Saouch	0 families	0 person(s)	0 families	0 person(s)	0 families	0 person(s)
Lun	0 families	0 person(s)	0 families	0 person(s)	0 families	0 person(s)
Kachak	0 families	0 person(s)	0 families	0 person(s)	0 families	0 person(s)
Praov	0 families	0 person(s)	0 families	0 person(s)	0 families	0 person(s)
Others	0 families	0 person(s)	0 families	0 person(s)	0 families	0 person(s)
Total	0 families	0 person(s)	0 families	0 person(s)	0 families	0 person(s)

Note: "Others" refer to other ethnic groups which are not listed.

7.2 Other Minorities in the District over 3 years

Minority	2006		2007		2008	
	# families	# population	# families	# population	# families	# population
Khmer Islamic	0 families	0 person(s)	0 families	0 person(s)	0 families	0 person(s)
Vietnamese	0 families	0 person(s)	0 families	0 person(s)	0 families	0 person(s)
Laos	0 families	0 person(s)	0 families	0 person(s)	0 families	0 person(s)

Note: Number of indigenous and minority population are additional data, so some village may not recorded.

SECTION C: PLANS AND PROJECTS

8 Priorities and Plans

8.1 Priorities of Commune Councils for 2009 in the District by Sector

The District Priority Activity Matrix (DPAM) data are taken from the CDPD. The DPAM is used for the District Integration Workshop (DIW), to show what kind of projects the commune has proposed in their Commune Investment Plan (CIP) for 2009. Donors, departments and other agencies then consider which projects they want to support and which projects they are not interested in. This results in Temporary Agreements between the Commune Council and the Supporter (NGO, Department, private donor, etc), as shown in table 8.2

No.	Project Name	Preaek Chrey	Prey Kanlaong	Ta Kao	Pou Rieng	Preaek Anteah	Req.Project
		141103	141104	141105	141101	141102	Total
Economic							
1	Compost fertilizer training	3 training					1
2	Mixed farming system training		5 training		4 place	3 training	3
3	Rice seed production training					3 training	1
4	Soil improvement techniques training	3 training		6 training			2
5	Subsidiary cropping technique training			3 training			1
6	Rice cultivation technique training			6 training			1
7	Animal vaccination request	310 Head	2630 Head	1732 Head	2744 Head	909 Head	5
8	Village veterinary training	3 time	5 training	3 time		3 training	4
9	Animal raising training		5 training			3 training	2
10	Rice seed request	9546 T					1
11	Calf for raising request	500 Head					1
12	Pesticide request	30610 m		1197 package			2
13	Fish raising training			3 training			1
14	Road maintenance committee				4 Team		1
15	Road maintenance project	5425 m	1440 m	4950 m	5470 m		4
16	Laterite/natural gravel road construction		6300 m				1
17	Culvert construction	5 place	10 place		2 place		3
18	Bridger construction	1 place		2 place		1 place	3
19	Earth road repairing	4060 m	6300 m	1200 m	2400 m	13180 m	5

District Data Book 2009: Development Plans and Projects

No.	Project Name	Preaek Chrey	Prey Kanlaong	Ta Kao	Pou Rieng	Preaek Anteah	Req.Project
		141103	141104	141105	141101	141102	Total
20	Dam construction			3100 m			1
21	Water gate construction			1 place			1
22	Canal repairing	2835 m	6900 m	9 km	2500 m	2200 m	5
23	Dam repairing	1356 m	5550 m		1204 m	3350 m	4
24	Cash credit	150 Team		128 Team			2
Social							
1	Family planning			8 time			1
2	Antenatal care			12 time			1
3	Reproductive health awareness education			3 training			1
4	HIV/AIDS awareness education	6 time	5 time	8 training			3
5	HIV/AIDS infected person assistance		1 person	1 Team			2
6	HIV/AIDS orphan children assistance	1 Team				10 person	2
7	Self-supported HIV/AIDS team formation	1 Team					1
8	Health/hygiene education for local people	3 time		8 time			2
9	Children and women vaccination	7 time		12 time		7 time	3
10	VHV training	1 training					1
11	Midwife strengthening/training	1 training	5 person		1 person		3
12	Nutrition support		45 person				1
13	Latrine construction			40 toilet	1350 toilet	35 toilet	3
14	Sanitation day campaign organizing					5 time	1
15	Commune health center construction	1 place	1 building		1 building		3
16	Village health post construction					1 building	1
17	Water filter equipment supply	1746 Container	1180 Container	400 Container	1200 Container	1050 Container	5
18	Family wate jars provision					70 Reservoir	1
19	Wells water testing				4 Time		1
20	Pump wells construction					35 well	1

District Data Book 2009: Development Plans and Projects

No.	Project Name	Preaek Chrey	Prey Kanlaong	Ta Kao	Pou Rieng	Preaek Anteah	Req.Project
		141103	141104	141105	141101	141102	Total
21	Literacy class			8 class			1
22	Literacy teacher support			8 person			1
23	School building	10 room	1 building			18 room	3
24	Kindergarten school construction/repair	5 room		2 place	2 class	5 room	4
25	Pre-school teacher/kid keeper support	5 person			2 class	5 person	3
26	Teacher/volunteer teacher need	15 person					1
27	Education for all dissemination	3 time		8 time	4 time		3
28	School materials support to poor pupils					5 schools	1
29	Scholarship provision to poor pupils	125 person	150 person	120 person	365 person		4
30	Vocational training	3 training	5 training	3 training			3
31	Skill training for disabled person			3 training			1
32	Emergency relief	79550 T					1
33	Flood refuge mound/temporary shelter provision	1591 piece				4 place	2
34	Orphan children assistance/support		15 person				2
35	Boat provision to poor family	5 set					1
NREM							
1	Fishery law education	5 time	5 time	8 time	4 time		4
2	Tree plantation project		15000 Tree		4000 Tree		2
3	Tree planting promotion/dissemination			8 time			1
4	Illegal fishing prevention	5 time		8 Team		3 time	3
5	Flooded forest clearance prevention	5 time				3 time	2
Administration and Security							
1	Civil registration encouragement	3 time	250 person	3 time	1300 person	3 time	6
2	Administration and commune law training	1 training					1
3	Human rights and law training	3 training					1

District Data Book 2009: Development Plans and Projects

No.	Project Name	Preaek Chrey	Prey Kanlaong	Ta Kao	Pou Rieng	Preaek Anteah	Req.Project
		141103	141104	141105	141101	141102	Total
4	Commune office construction/renovation	1 building		1 building	1 building		3
5	Radio communication provision					1 set	1
6	Land law dissemination	5 time		8 time		3 time	3
7	Provision of land titles/certificates	1591 doc	1187 doc	1391 doc	642 doc	1817 doc	5
8	Land registration dissemination/enforcement			8 time			1
9	People guard activities formation/strengthening	5 Team		3 time		3 time	3
10	Local security regulation/order dissemination			3 time			1
11	Human right and related law education			3 training		3 training	2
Gender							
1	Gender mainstreaming concept training	3 training	5 time		4 training		3
2	Women role in development strengthening/dissemination			8 time			1
3	Gender mainstreaming among local people			8 time			1
4	Gender and child rights dissemination	5 time		8 time			2
5	Scholarship provision to female pupil	78 person		67 person			2
6	CCWCs strengthening/activation					3 training	1
7	Woman and children's rights dissemination		5 time		4 time		2
8	Women/children rights alleviation support					3 time	1
9	Girls rights in access to education dissemination					3 time	1
10	Law against domestic violence dissemination	5 time		3 time		3 time	3
11	Rescue children & women from violence			17 person			1

Source: CDPD – District Priority Matrix

8.2 Temporary Agreements by Commune, for 2009

At the District Integration Workshop (DIW) the Supporters (donors, agencies, private donors, NGOs, etc.) identify which projects/activities they would like to support or they put forward their own projects to be implemented in a particular commune. Once there is agreement between Commune Councils and Supporters on specific projects a **Temporary Agreement** is signed by the commune and the Supporter to show their mutual commitment to the identified projects/activities.

It is important to keep in mind that such Temporary Agreements do not necessarily result in implementation.

8.2.1 Temporary Agreements for 2009 as per DIW 2008 for Commune: Preaek Chrey

Commune GIS	Commune	Temporary Agreements				Supporter	Funding Source	Listed in CIP before DIW
		Project Name	Quantity	Unit	Est.Cost (K.Riels)			
Economic								
141103	Preaek Chrey	Cash credit	0	Team	0	Acleda Bank Plc.		✓
141103	Preaek Chrey		0	person	0	AmReth (EMT)		☐
141103	Preaek Chrey	Cash credit	0	Team	0	AmReth (EMT)		✓
141103	Preaek Chrey	Cash credit	150	person	280000	Credit PRASAC		✓
Social								
141103	Preaek Chrey		5	village	0	Department of Rural Development		☐
141103	Preaek Chrey		0	person	0	Veteran International of Cambodia		☐
141103	Preaek Chrey		0	person	0	Veteran International of Cambodia		☐
141103	Preaek Chrey		0	person	0	Veteran International of Cambodia		☐
141103	Preaek Chrey		0	person	0	Veteran International of Cambodia		☐
141103	Preaek Chrey		0	person	0	Veteran International of Cambodia		☐

Commune GIS	Commune	Temporary Agreements				Supporter	Funding Source	Listed in CIP before DIW
		Project Name	Quantity	Unit	Est.Cost (K.Riels)			
141103	Preaek Chrey		0	person	0	Veteran International of Cambodia		<input type="checkbox"/>
141103	Preaek Chrey	KMeragppl;meFua)aycMeraHT wks¥at	0	Container	0	Department of Rural Development		✓
141103	Preaek Chrey		0	time	0	Department of Health		<input type="checkbox"/>
141103	Preaek Chrey	Children and women vaccination	0	time	0	Department of Health		✓
141103	Preaek Chrey	HIV/AIDS awareness education	0	time	0	Department of Health		✓
141103	Preaek Chrey	HIV/AIDS orphan children assistance	0	Team	0	Department of Health		✓
141103	Preaek Chrey	Self-supported HIV/AIDS team formation	0	Team	0	Department of Health		✓
141103	Preaek Chrey	Health/hygiene education for local people	0	time	0	Department of Rural Development		✓
Administration and Security								
141103	Preaek Chrey		0	training	0	Department of Women		<input type="checkbox"/>

8.2.2 Temporary Agreements for 2009 as per DIW 2008 for Commune: Prey Kanlaong

Commune GIS	Commune	Temporary Agreements				Supporter	Funding Source	Listed in CIP before DIW
		Project Name	Quantity	Unit	Est.Cost (K.Riels)			
Economic								
141104	Prey Kanlaong	Cash credit	20	person	50000	Credit PRASAC		<input type="checkbox"/>
141104	Prey Kanlaong	Cash credit	0	person	0	Acleda Bank Plc.		<input type="checkbox"/>
141104	Prey Kanlaong		0	family	0	Cambodia Rural Economic Development Initiative Transformation		<input type="checkbox"/>

District Data Book 2009: Development Plans and Projects

Commune GIS	Commune	Temporary Agreements				Supporter	Funding Source	Listed in CIP befor DIW
		Project Name	Quantity	Unit	Est.Cost (K.Riels)			
141104	Prey Kanlaong	Cash credit	0	person	0	AmReth (EMT)		<input type="checkbox"/>
141104	Prey Kanlaong		0	person	0	AmReth (EMT)		<input type="checkbox"/>
141104	Prey Kanlaong		0	time	0	Centre d'Etude et de Development Agricole Cambodgien		<input type="checkbox"/>
Social								
141104	Prey Kanlaong		0	person	0	Veteran International of Cambodia		<input type="checkbox"/>
141104	Prey Kanlaong		0	time	0	Department of Health		<input type="checkbox"/>
141104	Prey Kanlaong		0	person	0	Veteran International of Cambodia		<input type="checkbox"/>
141104	Prey Kanlaong		0	person	0	Veteran International of Cambodia		<input type="checkbox"/>
141104	Prey Kanlaong		0	person	0	Veteran International of Cambodia		<input type="checkbox"/>
141104	Prey Kanlaong		5	village	0	Department of Rural Development		<input type="checkbox"/>
141104	Prey Kanlaong		0	person	0	Veteran International of Cambodia		<input type="checkbox"/>
141104	Prey Kanlaong		0	person	0	Department of Health		<input type="checkbox"/>
141104	Prey Kanlaong		0	time	0	Department of Health		<input type="checkbox"/>
141104	Prey Kanlaong	HIV/AIDS infected person assistance	0	person	0	Department of Health		✓
141104	Prey Kanlaong	HIV/AIDS awareness education	0	time	0	Department of Health		✓
141104	Prey Kanlaong		0	person	0	Veteran International of Cambodia		<input type="checkbox"/>
NREM								

Commune GIS	Commune	Temporary Agreements				Supporter	Funding Source	Listed in CIP befor DIW
		Project Name	Quantity	Unit	Est.Cost (K.Riels)			
141104	Prey Kanlaong		0	time	0	Centre d'Etude et de Development Agricole Cambodgien		<input type="checkbox"/>
Administration and Security								
141104	Prey Kanlaong		0	training	0	Department of Women		<input type="checkbox"/>
Gender								
141104	Prey Kanlaong	Domestic violence protection training	0	time	0	Department of Women		<input type="checkbox"/>

8.2.3 Temporary Agreements for 2009 as per DIW 2008 for Commune: Ta Kao

Commune GIS	Commune	Temporary Agreements				Supporter	Funding Source	Listed in CIP befor DIW	
		Project Name	Quantity	Unit	Est.Cost (K.Riels)				
Economic									
141105	Ta Kao	Cash credit	0	Team	0	Acleda Bank Plc.		✓	
141105	Ta Kao		0	time	0	Centre d'Etude et de Development Agricole Cambodgien		☐	
141105	Ta Kao		0	person	0	AmReth (EMT)		☐	
141105	Ta Kao	Cash credit	0	Team	0	AmReth (EMT)		✓	
141105	Ta Kao	Cash credit	30	person	150000	Credit PRASAC		✓	
141105	Ta Kao	Cash credit	0	Team	0	Cambodia Rural Economic Development Initiative Transformation		✓	
Social									
141105	Ta Kao		0	person	0	Veteran International of Cambodia		☐	

District Data Book 2009: Development Plans and Projects

Commune GIS	Commune	Temporary Agreements				Supporter	Funding Source	Listed in CIP befor DIW
		Project Name	Quantity	Unit	Est.Cost (K.Riels)			
141105	Ta Kao	Skill training for disabled person	0	training	0	Veteran International of Cambodia		✓
141105	Ta Kao		0	person	0	Veteran International of Cambodia		□
141105	Ta Kao		0	person	0	Veteran International of Cambodia		□
141105	Ta Kao		0	person	0	Veteran International of Cambodia		□
141105	Ta Kao		0	time	0	Department of Health		□
141105	Ta Kao	Children and women vaccination	0	time	0	Department of Health		✓
141105	Ta Kao	HIV/AIDS awareness education	0	training	0	Department of Health		✓
141105	Ta Kao	HIV/AIDS infected person assistance	0	Team	0	Department of Health		✓
141105	Ta Kao	Antenatal care	0	time	0	Department of Health		✓
141105	Ta Kao	Reproductive health awareness education	0	training	0	Department of Health		✓
141105	Ta Kao		0	person	0	Veteran International of Cambodia		□
NREM								
141105	Ta Kao		0	time	0	Centre d'Etude et de Development Agricole Cambodgien		□
Administration and Security								
141105	Ta Kao		0	training	0	Department of Women		□
Gender								
141105	Ta Kao	Women role in development strengthening/dissemination	16	time	3280	Khmer Youth Association		✓
141105	Ta Kao	Rescue children & women from	0	person	0	Department of Women		✓

Commune GIS	Commune	Temporary Agreements				Supporter	Funding Source	Listed in CIP before DIW
		Project Name	Quantity	Unit	Est.Cost (K.Riels)			
		violence						
141105	Ta Kao	Law against domestic violence dissemination	0	time	0	Department of Women		✓
141105	Ta Kao		1	training	400	Khmer Youth Association		□
141105	Ta Kao	International women's day celebration organizing	1	time	400	Khmer Youth Association		□
141105	Ta Kao	Gender and child rights dissemination	16	time	3280	Khmer Youth Association		✓
141105	Ta Kao	Gender mainstreaming among local people	16	time	3280	Khmer Youth Association		✓

8.2.4 Temporary Agreements for 2009 as per DIW 2008 for Commune: Pou Rieng

Commune GIS	Commune	Temporary Agreements				Supporter	Funding Source	Listed in CIP befor DIW
		Project Name	Quantity	Unit	Est.Cost (K.Riels)			
Economic								
141101	Pou Rieng		0	person	0	AmReth (EMT)		<input type="checkbox"/>
141101	Pou Rieng	Cash credit	0	person	0	AmReth (EMT)		<input type="checkbox"/>
141101	Pou Rieng	Cash credit	0	person	0	Acleda Bank Plc.		<input type="checkbox"/>
Social								
141101	Pou Rieng		0	time	0	Department of Health		<input type="checkbox"/>
141101	Pou Rieng		0	person	0	Department of Health		<input type="checkbox"/>
141101	Pou Rieng	KMeragBinitüKuNPaBTwkGNpÚg	4	village	0	Department of Rural Development		✓
141101	Pou Rieng		0	person	0	Veteran International of Cambodia		<input type="checkbox"/>

Commune GIS	Commune	Temporary Agreements				Supporter	Funding Source	Listed in CIP before DIW
		Project Name	Quantity	Unit	Est.Cost (K.Riels)			
141101	Pou Rieng		0	person	0	Veteran International of Cambodia		<input type="checkbox"/>
141101	Pou Rieng		0	person	0	Veteran International of Cambodia		<input type="checkbox"/>
141101	Pou Rieng		0	person	0	Veteran International of Cambodia		<input type="checkbox"/>
141101	Pou Rieng		0	person	0	Veteran International of Cambodia		<input type="checkbox"/>
141101	Pou Rieng		0	person	0	Veteran International of Cambodia		<input type="checkbox"/>
Administration and Security								
141101	Pou Rieng		0	training	0	Department of Women		<input type="checkbox"/>

8.2.5 Temporary Agreements for 2009 as per DIW 2008 for Commune: Preaek Anteah

Commune GIS	Commune	Temporary Agreements				Supporter	Funding Source	Listed in CIP befor DIW
		Project Name	Quantity	Unit	Est.Cost (K.Riels)			
Economic								
141102	Preaek Anteah		0	person	0	AmReth (EMT)		<input type="checkbox"/>
141102	Preaek Anteah	Cash credit	0	person	0	AmReth (EMT)		<input type="checkbox"/>
141102	Preaek Anteah	Cash credit	150	person	280000	Credit PRASAC		<input type="checkbox"/>
141102	Preaek Anteah	Cash credit	0	person	0	Acleda Bank Plc.		<input type="checkbox"/>
Social								
141102	Preaek Anteah		0	time	0	Department of Health		<input type="checkbox"/>
141102	Preaek Anteah	Children and women vaccination	0	time	0	Department of Health		✓
141102	Preaek Anteah	HIV/AIDS orphan children	0	person	0	Department of Health		✓

District Data Book 2009: Development Plans and Projects

Commune GIS	Commune	Temporary Agreements				Supporter	Funding Source	Listed in CIP befor DIW
		Project Name	Quantity	Unit	Est.Cost (K.Riels)			
		assistance						
141102	Preaek Anteah		0	person	0	Veteran International of Cambodia		<input type="checkbox"/>
141102	Preaek Anteah		0	person	0	Veteran International of Cambodia		<input type="checkbox"/>
141102	Preaek Anteah		0	person	0	Veteran International of Cambodia		<input type="checkbox"/>
141102	Preaek Anteah		0	person	0	Veteran International of Cambodia		<input type="checkbox"/>
141102	Preaek Anteah		0	person	0	Veteran International of Cambodia		<input type="checkbox"/>
141102	Preaek Anteah		0	person	0	Veteran International of Cambodia		<input type="checkbox"/>
Gender								
141102	Preaek Anteah	CCWCs strengthening/activation	0	training	0	Department of Women		✓

Source: CDPD, District Level Detail TA resulting from DIW

8.3 Outputs, estimated and actual costs of C/S Fund Projects between 2005 and 2008, by Commune

Commune	Project Type	Budget Year	Output		Quantity	Unit	Unit Cost MR	
			Description	Type			Estimate	Actual
Preaek Chrey	Rural Transport	2005	Earth road	Repair	1.45	Km	30.88	21.16
Preaek Chrey	Irrigation	2006	Canal	Repair	1.5	Km	41.12	39.75
Preaek Chrey	Irrigation	2007	Canal	Repair	0.886	Km	34.76	33.67
Preaek Chrey	Rural Transport	2008	Earth road	Repair	1.059	Km	33.05	24.38
Preaek Chrey	Rural Transport	2008	Single pipe culvert	New	2	Place	3.46	24.38
Prey Kanlaong	Education	2005	Brick school with tile roof	New	3	School room	48.20	37.50
Prey Kanlaong	Rural Transport	2006	Single pipe culvert	New	1	Place	1.01	26.92
Prey Kanlaong	Rural Transport	2006	Earth road	Repair	1.44	Km	22.93	26.92
Prey Kanlaong	Education	2006	Brick school (general)	New	3	School room	11.50	12.77
Prey Kanlaong	Education	2006	School furniture	New	3	School room	3.78	12.77
Prey Kanlaong	Rural Transport	2007	Single pipe culvert	New	7	Place	5.87	30.51
Prey Kanlaong	Rural Transport	2007	Earth road	Repair	2.24	Km	24.61	30.51
Prey Kanlaong	Rural Transport	2008	Single pipe culvert	New	1	Place	1.66	31.56
Prey Kanlaong	Rural Transport	2008	Earth road	Repair	1.677	Km	30.01	31.56
Ta Kao	Rural Transport	2005	Double pipe culvert	New	2	Place	1.94	25.79
Ta Kao	Rural Transport	2005	Earth road	Repair	2.658	Km	24.81	25.79
Ta Kao	Rural Transport	2006	Earth road	Repair	1.68	Km	30.19	31.24
Ta Kao	Rural Transport	2006	Single pipe culvert	New	1	Place	1.00	31.24
Ta Kao	Rural Transport	2007	Earth road	Repair	1.65	Km	31.34	21.95
Ta Kao	Irrigation	2008	Canal	Repair	1.912	Km	42.34	42.91
Pou Rieng	Rural Transport	2005	Earth road	Repair	1.938	Km	28.16	28.16
Pou Rieng	Rural Transport	2006	Earth road	Repair	0.2	Km	10.50	9.60
Pou Rieng	Rural Transport	2006	Earth road	Repair	0.85	Km	29.86	20.33
Pou Rieng	Rural Transport	2006	Single pipe culvert	New	1	Place	1.42	20.33
Pou Rieng	Rural Transport	2007	Earth road	Repair	1.52	Km	35.27	35.75
Pou Rieng	Rural Transport	2008	Single pipe culvert	New	1	Place	1.80	34.70

Commune	Project Type	Budget Year	Output		Quantity	Unit	Unit Cost MR	
			Description	Type			Estimate	Actual
Pou Rieng	Rural Transport	2008	Earth road	Repair	1.8	Km	32.89	34.70
Preaek Anteah	Irrigation	2005	Earth dam	Repair	1.25	Km	29.37	17.20
Preaek Anteah	Irrigation	2006	Single pipe Culvert with gate	New	3	Place	9.59	43.60
Preaek Anteah	Irrigation	2006	Earth dam	Repair	0.75	Km	36.37	43.60
Preaek Anteah	Irrigation	2007	Canal	Repair	1.895	Km	35.78	37.03
Preaek Anteah	Rural Transport	2008	Earth road	Repair	1.5	Km	35.54	29.78

Source: PID

8.4 Total Expenditure on C/S Fund Projects by sector and commune between 2005 and 2008

Sector	Total Cost in Million Riels				
	Preaek Chrey	Prey Kanlaong	Ta Kao	Pou Rieng	Preaek Anteah
Education		50.27			
Irrigation	73.42		42.91		97.83
Rural Transport	45.54	88.99	78.97	128.54	29.78

Source: PID

8.5 Actual 2009 C/S Fund projects by Commune

Commune	Project Type	Project Output		Quantity	Unit	Fund Source (Riels)		
		Description	Type			Total	C/S	Local Contribution
Pou Rieng	Rural Transport	Earth road	Repair	1.08	km	45,473,000	45,473,000	-
Pou Rieng	Rural Transport	Single pipe culvert 0.6m diameter	New	1	Place	45,473,000	45,473,000	-
Preaek Anteah	Rural Transport	Earth road	Repair	1	km	47,353,800	47,353,800	-
Preaek Anteah	Rural Transport	Earth road	Repair	0.24	km	47,353,800	47,353,800	-
Preaek Anteah	Rural Transport	Single pipe culvert 0.6m diameter	New	1	Place	47,353,800	47,353,800	-
Preaek Chrey	Rural Transport	Earth road	Repair	1.7	km	47,306,000	47,306,000	-

District Data Book 2009: Development Plans and Projects

Commune	Project Type	Project Output		Quantity	Unit	Fund Source (Riels)		
		Description	Type			Total	C/S	Local Contribution
Preaek Chrey	Rural Transport	Single pipe culvert 0.6m diameter	New	1	Place	47,306,000	47,306,000	-
Preaek Chrey	Rural Transport	Single pipe culvert 1.0m diameter	New	1	Place	47,306,000	47,306,000	-
Prey Kanlaong	Rural Transport	Earth road	Repair	0.643	km	41,667,000	41,267,000	400,000
Prey Kanlaong	Rural Transport	Earth road	Repair	0.69	km	41,667,000	41,267,000	400,000
Prey Kanlaong	Rural Transport	Earth road	Repair	0.572	km	41,667,000	41,267,000	400,000
Prey Kanlaong	Rural Transport	Single pipe culvert 0.6m diameter	New	2	Place	41,667,000	41,267,000	400,000
Prey Kanlaong	Rural Transport	Single pipe culvert 0.6m diameter	New	2	Place	41,667,000	41,267,000	400,000
Ta Kao	Irrigation	Unlined Earth canal	Repair	0.25	km	35,631,635	35,231,635	400,000
Ta Kao	Irrigation	Unlined Earth canal	Repair	0.3	km	35,631,635	35,231,635	400,000
Ta Kao	Irrigation	Unlined Earth canal	Repair	1.05	km	35,631,635	35,231,635	400,000

Source: PID

9 District level Projects from 2006 to 2009

District Initiative Projects (DIPs) are funded by Danida, DFID and PSDD (UNDP, DFID and SIDA).

Funding for 2006-2008

Between 2006 and 2008 there were 14 provinces funded by PSDD and 10 by Danida and DFID. The list of provinces and who funded these is below

Danida and DFID funded DIPs:

Kampong Cham	Kampong Speu	Koh Kong	Kratie	Mondulkiri
Pursat	Ratanakiri	Siem Reap	Sihanoukville	Kep

PSDD funded DIPs:

Banteay Meanchey	Battambang	Kampong Chhnang	Kandal	Phnom Penh
Prey Veng	Svay Rieng	Takeo	Kampong Thom	Preah Vihear
Stung Treng	Kampot	Oddar Meanchey	Pailin	

Funding for 2009

In 2009 there was a change to the number of provinces funded by the two streams. Danida and DFID were still funding the same 10 provinces they had been funding the previous three years, but two more provinces were added *Kampong Thom and Kampot*. Now PSDD funds 12 provinces and Danida and DFID fund 12.

9.1 District Initiative Infrastructure Projects from 2006 to 2009

9.1.1 District Initiative Infrastructure Projects for 2006 to 2008

No District Initiative Infrastructure Projects were implemented in this district for 2006-2008

9.1.2 District Initiative Infrastructure Projects in 2009

No District Initiative Infrastructure Projects have been implemented in this district for 2009

9.2 District Initiative Service Projects from 2006 to 2009

9.2.1 District Initiative Service Projects for 2006 to 2008

No District Initiative Service Projects were implemented in this district for 2006-2008

9.2.2 District Initiative Service Projects in 2009

No District Initiative Service Projects have been implemented in this district for 2009

9.3 Inter Commune Council Projects in 2008 and 2009

9.3.1 ICC Projects in 2008

Districts	Project Location	Beneficiary Commune/ Sangkat	Outputs	Project Size	Unit	Contract Cost	Fund Sources	
							ICC Fund	Community
Ba Phnum	Chheu Kach, Choeung Phnom	Chheu Kach, Choeung Phnom	Kampong Thnal canal restoration	900	Metre	\$29,580.00	\$29,530.00	\$50.00
			Culvert with adjustable gate	1	Unit			
Total for Ba Phnum						\$29,580.00	\$29,530.00	\$50.00
Kampong Trabaek	Cheang Dek, Thkov, Peam Muntea	Cheang Dek, Thkov, Peam Muntea	Prek Bot canal restoration	4,024	Metre	\$24,144.00	\$24,104.00	\$40.00
Total for Kampong Trabaek						\$24,144.00	\$24,104.00	\$40.00
Me Sang	Angkor Sa, Prey Rumdeng	Angkor Sa, Prey Rumdeng	Earth road with sand cover	3,980	Metre	\$30,052.00	\$29,852.00	\$200.00
			Road culvert construction	2	Unit			
Total for Me Sang						\$30,052.00	\$29,852.00	\$200.00
Peam Chor	Koh Rumchek, Svay Phluoh	Koh Rumchek, Svay Phluoh	Earth road with sand cover		Metre			
Total for Peam Chor						\$0.00	\$0.00	\$0.00
Prey Veng	Damrey Puon, Samraong	Damrey Puon, Samraong	Earth road with sand cover	5,600	Metre	\$29,904.00	\$29,804.00	\$100.00
Total for Prey Veng						\$29,904.00	\$29,804.00	\$100.00
Sithor Kandal	Prey Daemthning	Prey Daemthning,	School building construction	3		\$29,904.00	\$29,804.00	\$100.00
			School furniture	1	Lump-sum			

		Prey Toting, Poti, Russey Sanh, Rumlech, Ampil Krao						
Total for Sithor Kandal						\$29,904.00	\$29,804.00	\$100.00
Total for Prey Veng						\$143,584.00	\$143,094.00	\$490.00

9.3.2 ICC Projects in 2009

Districts	Project Location	Beneficiary Commune/ Sangkat	Outputs	Project Size	Unit	Contract Cost	Fund Sources	
							ICC Fund	Community
Ba Phnum-Svay Anthor	Theay, Tuek Thla	Theay, Tuek Thla	Earth road upgrade with sand cover	7,850	Meter	\$24,976.57	\$24,924.57	\$50.00
Total for Ba Phnom-Svay Anthor						\$24,976.57	\$24,924.57	\$50.00
Ba Phnum - Kampong Trabek	Sdao Kaung, Kansom Oak	Sdao Kaung, Kansom Oak	Earth road upgrade with sand cover	5,250	Meter	\$12,005.00	\$11,905.00	\$100.00
Total for Kampong Trabek						\$12,005.00	\$11,905.00	\$100.00
Me Sang	Chiphoch, Prey Khnes,	Chiphoch, Prey Khnes,	Earth road upgrade with sand cover	5,200	Meter	\$20,120.00	\$19,970.00	\$150.00
			Single Culvert	3	Place			
			Single Culvert	1	place			
	Prey Khnes, Tuek Thla	Preykhnes, Tuek Thla	Earth road upgrade with sand cover	5,503	Meter	\$19,999.67	\$19,849.67	\$150.00
			Single Culvert	3	place			
			Single culvert repair	1	place			
			Single culvert repair	2	place			
Total for Me Sang						\$40,119.67	\$39,819.67	\$300.00
Peam Chor	Konpong Prasat, Russey Srok, Koh Sampov	Konpong Prasat, Russey Srok, Koh Sampov	Bidding process not complete and contract not yet signed					
Total for Peam Chor						\$0.00	\$0.00	\$0.00
Prey Veng	Chrey	Chrey, Pean ROUNG, Chea	School building construction	4	Room	\$29,200.00	\$29,100.00	\$100.00

		Klang, Angkor Tret	School furniture	4	Room			
Total for Prey Veng						\$29,200.00	\$29,100.00	\$100.00
Sithor Kandal	Russey Sanh, Ampil Krao	Russey Sanh, Ampil Krao	Project bidding process not complete and contract not yet signed					
Total for Sithor Kandal						\$0.00	\$0.00	\$0.00
Total for Prey Veng						\$106,301.24	\$105,749.24	\$550.00

Source: ICC project, Ministry of Interior (DoLA), -UNDP project for Local Governance – DDLG

9.4 Other Projects in 2008 and 2009

9.4.1 RPRP

9.4.1.1 RPRP Projects from 2006 to 2008

No RPRP projects in this district at this time

9.4.1.2 RPRP Projects in 2009

No RPRP projects in this district at this time

9.4.2 Seth Korma

9.4.2.1 Seth Koma 2007

District	# Comm.	# Village	CCWC Operational cost	Events (# decided by commune)	CPS				Total
					# teacher	Budget for teachers	# of CPS shelter	Total cost (\$/ shelter)	
Ba Phnum	9	108	\$2,885	\$1,620	49	\$3,308	4	\$3,607	\$11,420
Kampong Trabaek	13	122	\$3,603	\$2,340	48	\$3,240	3	\$2,705	\$11,888
Kanhchriech	8	99	\$2,684	\$1,440	52	\$3,510	3	\$2,705	\$10,339
Preah Sdach	11	145	\$3,429	\$1,980	12	\$810	0	\$0	\$6,219
Prey Veng	11	138	\$2,149	\$990	0	\$0	0	\$0	\$3,139
Me Sang	8	118	\$1,704	\$720	0	\$0	0	\$0	\$2,424
Grand Total	60	730	\$16,455	\$9,090	161	\$10,868	10	\$9,017	\$45,429

Source: UNICEF

9.4.2.2 Seth Koma 2008

There are no Seth Koma projects being implemented in this district or province at this time.

9.4.2.3 Seth Koma 2009

Description		Baphnom	Kg. Trabek	Kanh Chreach	Preah Sdach	Prey Veng	Mesang	Kamchay Mea	Peam Chor	Kg. Leav	Pea Raing	Peam Ro	Sithor Kandal	Total
# Communes		9	13	8	11	11	8	8	10	8	11	8	11	116
# Vilages		108	122	99	145	138	118	116	50	44	84	40	60	1124
CCWC Ope. Costs	Admin Costs	\$1,728	\$2,326	\$1,559	\$2,177	\$2,142	\$1,647	\$1,701	\$1,575	\$1,276	\$1,872	\$1,256	\$1,752	\$21,011
	Support CCWC forum	\$378	\$546	\$0	\$462	\$462	\$336	\$0	\$0	\$0	\$0	\$0	\$0	\$2,184
CPS	Support monthly allowance CPS teachers	\$2,903	\$2,700	\$3,443	\$1,485	\$338	\$0	\$0	\$0	\$0	\$0	\$0	\$0	\$10,868
	M& E	\$1,584	\$1,440	\$1,836	\$792	\$180	\$0	\$0	\$0	\$0	\$0	\$0	\$0	\$5,832
	Pre-school building	\$0	\$0	\$1,500	\$2,500	\$1,000	\$0	\$0	\$0	\$0	\$0	\$0	\$0	\$5,000
PE		\$360	\$540	\$900	\$180	\$0	\$0	\$0	\$0	\$0	\$0	\$0	\$0	\$1,980
BR		\$648	\$936	\$576	\$792	\$792	\$576	\$576	\$720	\$576	\$792	\$576	\$792	\$8,352
Joint Outreach Activities		\$648	\$936	\$576	\$792	\$792	\$576	\$576	\$720	\$576	\$792	\$576	\$792	\$8,352
Referrals for pregnant women and sick children		\$800	\$200	\$200	\$200	\$400	\$200	\$400	\$0	\$0	\$200	\$0	\$200	\$2,800
Discretionary fund		\$1,000	\$0	\$0	\$0	\$500	\$0	\$500	\$0	\$0	\$0	\$0	\$0	\$2,000
Village Mapping		\$1,200	\$0	\$0	\$0	\$650	\$0	\$500	\$0	\$0	\$0	\$0	\$0	\$2,350
Community Lead	Montly meeting	\$0	\$0	\$0	\$4,302	\$6,066	\$2,372	\$0	\$981	\$0	\$0	\$0	\$0	\$13,721
Total Sanitation (CLTS)	M&E of CLTS	\$0	\$0	\$0	\$1,008	\$1,449	\$630	\$0	\$252	\$0	\$0	\$0	\$0	\$3,339
	ODF	\$0	\$0	\$0	\$1,800	\$3,100	\$0	\$0	\$600	\$0	\$0	\$0	\$0	\$5,500
Total		\$11,213	\$9,624	\$10,590	\$16,490	\$17,871	\$6,337	\$4,253	\$4,848	\$2,428	\$3,656	\$2,408	\$3,536	\$93,252

SECTION D: SERVICES AND ORGANIZATIONS

10 Infrastructure

10.1 Length of and Expenditure on Roads in 2008, by District

Roads	PVG	Baphnom	Kam Chaymear	Kampong Trabek	Kanh Chreach	Mesang	Peam Chor
Length of paved road in the district	437	0	26	18	73	0	0
Length of unpaved reads in the district	1,129	n/a	417	n/a	0	145	145
Amount spent on constuction of roads in 2008 (\$)	-	n/a	n/a	n/a	n/a	n/a	n/a
Amount spent on repair and rehabilitation of roads in 2008 (\$)	1,266,755	99,416	110,082	221,065	65,354	76,928	82,059

Continue...

Roads	Peam Ro	Pear Rang	Prah Sdach	Svay Antor	Kampong Leav	Sithor Kandal	Prey Veng
Length of paved road in the district	30	91	21	36	5	137	n/a
Length of unpaved reads in the district	48	0	217	82	58	0	17
Amount spent on constuction of roads in 2008 (\$)	n/a	n/a	n/a	n/a	n/a	n/a	n/a
Amount spent on repair and rehabilitation of roads in 2008 (\$)	88,009	121,003	114,267	88,293	76,778	88,205	35,295

Note 1: Please note that these data are not necessarily complete or correct. The data are derived from government agencies at provincial and district level which used different recording systems, did not always have complete data or were, sometimes, less than willing to share their data.

Note 2: Please be aware that these data are incomplete due to the fact that the amounts for the construction, repair and rehabilitation recorded reflect only funds provided by the government, not the contributions by any other parties.

10.2 Scale of and Expenditure on Irrigation in 2008, by District

Irrigation	PVG	Baphnom	Kam Chaymear	Kampong Trabek	Kanh Chreach	Mesang	Peam Chor
Number of irrigation schemes operating in 2008	25 schemes + 1658km	1	6	3	25km	2	6
Total number of hectares under irrigation in dry season 2008	45,460	5,000	576	5,000	350	0	14,000
Total funds spent in 2008 on construction of irrigation systems (\$)	3,637,165	2,900,000	667,166	0	0	0	0
Total funds spent in 2008 on rehabilitation/repair of irrigation systems (\$)	246,175	12,220	0	9,585	0	0	17,664
Total funds spent in 2008 on operation and maintenance (\$)	n/a	n/a	n/a	n/a	n/a	n/a	n/a

Continue...

Irrigation	Peam Ro	Pear Rang	Prah Sdach	Svay Antor	Kampong Leav	Sithor Kandal	Prey Veng
Number of irrigation schemes operating in 2008	n/a	5km	3	99km	3	36km	1
Total number of hectares under irrigation in dry season 2008	n/a	7,264	7,500	3,982	1,229	559	n/a
Total funds spent in 2008 on construction of irrigation systems (\$)	29,999	0	0	0	0	40,000	0
Total funds spent in 2008 on rehabilitation/repair of irrigation systems (\$)	30,330	62,410	54,127	32,175	10,727	16,937	0
Total funds spent in 2008 on operation and maintenance (\$)	n/a	n/a	n/a	n/a	n/a	n/a	n/a

Note 1: Please note that these data are not necessarily complete or correct. The data are derived from government agencies at provincial and district level which used different recording systems, did not always have complete data or were, sometimes, less than willing to share their data.

Note 2: Please be aware that the data above are incomplete as these only reflect funds provided by the government, not the contributions by farmers or other parties.

10.3 Power Supply in 2008, by District

Electricity	PVG	Baphnom	Kam Chaymear	Kampong Trabek	Kanh Chreach	Mesang	Peam Chor
Total number of electricity connection to households	5,274	270	250	1,050	448	200	0
Total number of electricity connection to agencies, companies, organization	18	6	0	10	n/a	2	0
Total volume in KWh of electricity consumed last in 2008	369,600	n/a	n/a	360,000	n/a	9,600	0
total amount collected from users for consumed electricity (\$)	71,652	51,000	n/a	12,750	n/a	7,200	0
Per capita electricity consumption in 2008 in Kwh	2	12	n/a		n/a	4	0

Continue...

Electricity	Peam Ro	Pear Rang	Prah Sdach	Svay Antor	Kampong Leav	Sithor Kandal	Prey Veng
Total number of electricity connection to households	n/a	1,830	78	852	0	296	n/a
Total number of electricity connection to agencies, companies, organization	n/a	n/a	n/a	n/a	0	n/a	n/a
Total volume in KWh of electricity consumed last in 2008	n/a	n/a	n/a	n/a	0	n/a	n/a
total amount collected from users for consumed electricity (\$)	n/a	n/a	702	0	0	0	n/a
Per capita electricity consumption in 2008 in Kwh	n/a	n/a	30	0	0	7,000	n/a

Note 1: Please note that these data are not necessarily complete or correct. The data are derived from government agencies at provincial and district level which used different recording systems, did not always have complete data or were, sometimes, less than willing to share their data.

Note 2: These data only record electricity provided by electricity companies and does not include homes powered by generators or batteries (for this information see Section B: General Profile, Part 1: General Information; table 1.3.1 and chart 1.3.4).

District Data Book 2009: Services and Organizations

Note 3: *In most provinces electricity is only provided through town-based networks*

Note 4: *Per capita consumption is calculated by dividing the total volume of electricity produced in 2008 by the number of people living in each district as per the 2008 census (for the provincial data it is calculated against the number of people living in the province)*

11 Health Facilities

Please note that the Operational District (health) boundaries are different to the administrative district boundaries. Therefore the data provided here shows the facilities, staff, NGOs etc in each Operational District within the province NOT the administrative district.

Acronyms

Com Cov	Commune Covered	MW2	Secondary Midwives
CPA	Complementary Package of Activities	NU1	Primary Nurse
Dr	Doctor	NU2	Secondary Nurse
FDH	Former District Hospital	OD	Operational District
HC	Health Center	Others	Other Staff
HC (NB)	Health Center no building	PHD	Provincial Health Department
HP	Health Post	Pop 04-05	Population Covered 2004 or 2005
MA	Medical Assistant	RH	Referral Hospital
MPA	Minimum Package of Activities	Vil Cov	Village Covered
MW1	Primary Midwives	VIL-HC	Distance from Village to Health Center

11.1 Health Facilities in the Province, by Operational District

Prey Veng	OD	RH	HC	HP
Kamchay Mear	1	1	11	
Kampong Trabek	1	1	11	
Mesang	1	1	10	
Neak Loeung	1	1	17	
Pea Reang	1	1	15	
Preah Sdach	1	1	9	
Prey Veng	1	1	17	
Total	7	7	90	0

11.2 Health Facilities and Staff in the province, by Operational District

This table shows health facilities, staff and coverage of health facilities in each operational district.

No	Facility Name	Type	Class	Dr	Ma	Nu2	Nu1	Mw2	Mw1	Others	Com Cov	Vil Cov	Pop. 04-05
Kamchay Mear													
1	Cheach	HC	MPA	0	0	1	3	0	1	0	1	26	11,289
2	Don Koeng	HC	MPA	0	1	2	3	1	2	0	2	19	10,999
3	Kanhchriech	FDH	MPA	1	2	1	5	0	2	5	2	15	12,511
4	Kouk Kong	HC	MPA	0	0	3	3	0	0	1	2	27	11,473
5	Krabau	HC	MPA	0	0	2	1	0	1	1	2	15	10,938
6	Kranhung	HC	MPA	0	0	1	2	1	1	1	1	19	12,473
7	Preal	HC	MPA	0	0	1	4	1	1	0	1	16	10,257
8	Seang Khveang	HC	MPA	0	1	1	2	0	1	0	2	17	12,344
9	Smaong Cheung	HC	MPA	0	0	1	3	0	2	0	1	13	11,393
10	Smaong Tboung	HC(NB)	None	0	0	0	2	0	1	0	1	20	11,775
Total:				1	4	13	28	3	12	8	15	187	115,452
Kampong Trabek													
1	Tnaot	HC	MPA	0	0	2	2	0	4	1	3	17	10,320
2	Cham	HC(NB)	None	0	0	1	1	0	1	0	1	10	11,574
3	Cheang Dek	HC(NB)	None	0	0	0	2	0	1	1	1	12	10,177
4	Kampong Trabek	HC	MPA	0	0	2	3	0	3	0	3	12	11,590
5	Kansaom Ak	HC(NB)	None	0	0	0	3	0	0	0	1	9	10,108
6	Kou Khchak	HC	MPA	0	0	0	2	0	1	0	3	14	11,966
7	Peam Montear	HC	MPA	0	0	1	1	0	1	1	1	11	10,050
8	Prasat	HC	MPA	0	2	0	1	1	1	0	1	9	11,613
9	Pratheath	HC(NB)	None	0	0	0	2	0	1	0	2	11	11,546
10	Prey Chhor	HC	MPA	0	0	1	4	0	1	0	2	14	15,284
11	Prey Poun	HC	MPA	0	0	1	3	0	2	0	2	15	12,103
Total:				0	2	8	24	1	16	3	20	134	126,331
Mesang													
1	Thkov	HC	MPA	0	0	0	2	0	3	0	2	15	13,135
2	Angkor Sar	HC(NB)	None	0	0	0	2	0	1	0	1	9	10,282

District Data Book 2009: Services and Organizations

No	Facility Name	Type	Class	Dr	Ma	Nu2	Nu1	Mw2	Mw1	Others	Com Cov	Vil Cov	Pop. 04-05
3	Boeng Preah	HC	MPA	0	0	0	2	0	2	1	1	14	13,851
4	Chi Phoch	HC	MPA	0	0	1	4	1	1	0	1	11	12,258
5	Chres	HC	MPA	0	0	2	2	0	1	0	1	19	15,174
6	Prey Khnes	HC	MPA	0	0	1	3	0	1	0	1	17	11,658
7	Prey Rumdeng	HC	MPA	0	0	1	2	0	1	0	2	11	14,302
8	Prey Toteung	HC	MPA	0	0	1	3	0	1	0	1	12	11,028
9	Svay Andaung	HC(NB)	None	0	0	1	1	0	1	0	3	13	9,366
10	Svay Chrum	HC	MPA	0	0	1	3	0	2	0	0	16	12,368
Total:				0	0	8	24	1	14	1	13	137	123,422
Neak Loeung													
1	Trapeang Srae	HC	MPA	0	0	1	2	0	3	0	2	10	11,448
2	Ba Baong	HC	MPA	0	1	1	3	2	0	0	2	6	8,402
3	Banlich Prasat	HC(NB)	MPA	0	0	1	6	0	2	0	1	6	6,521
4	Cheung Phnom	FDH	MPA	1	1	0	5	1	2	2	3	10	11,175
5	Kampong Soeng	HC(NB)	None	0	1	3	0	1	0	0	1	12	12,071
6	Lvea	HC(NB)	None	0	0	1	3	0	1	0	1	11	7,880
7	Peam Mean Chey	HC(NB)	None	0	0	1	4	1	3	0	1	5	6,496
8	Peam Ro	FDH	MPA	2	0	3	8	0	4	2	2	5	7,665
9	Preaek Khsay Kha	HC	MPA	0	4	1	4	3	2	2	3	8	17,490
10	Preaek Sambour	HC(NB)	None	0	1	0	4	0	1	1	3	9	12,185
11	Prek Neak Loeung	HC	MPA	1	1	0	8	0	2	1	2	6	8,857
12	Reaks Chey	HC	MPA	0	1	1	3	0	1	1	1	11	8,090
13	Roung Damrei	HC	MPA	0	1	2	3	0	2	0	1	12	9,276
14	Rumchek	HC	MPA	0	0	1	3	0	1	0	1	16	14,315
15	Sdau Kaong	HC	MPA	0	0	2	4	0	2	0	2	17	10,684
16	Speu Ka	HC(NB)	None	0	0	0	4	0	2	0	2	12	11,143
17	Speu Kha	HC(NB)	None	0	0	0	2	0	1	1	2	14	12,107
Total:				4	11	18	66	8	29	10	30	170	175,805
Pea Reang													
1	Svay Phluos	FDH	MPA	0	0	1	5	1	9	0	3	6	11,503
2	Chrey Khmum	HC	MPA	0	0	2	3	0	0	0	2	10	8,789

District Data Book 2009: Services and Organizations

No	Facility Name	Type	Class	Dr	Ma	Nu2	Nu1	Mw2	Mw1	Others	Com Cov	Vil Cov	Pop. 04-05
3	Kampong Popil	HC	MPA	0	1	2	2	1	1	0	1	9	12,399
4	Kampong Prang	HC	MPA	0	0	1	1	0	1	0	2	10	13,901
5	Kampong Russei	HC	MPA	1	0	1	3	0	1	0	2	10	15,490
6	Kanhchom	HC	MPA	1	0	0	0	0	1	0	1	9	12,012
7	Mesa Prachan	HC	MPA	0	1	1	3	0	0	0	2	8	10,366
8	Pnov	HC	MPA	0	0	1	3	0	1	0	2	9	8,915
9	Pou Ti	HC	MPA	0	0	4	1	0	2	0	3	13	15,412
10	Preaek Changkran	FDH	MPA	2	0	8	6	0	2	0	2	11	13,326
11	Prey Daeum Thnoeng	HC	MPA	1	1	1	3	0	3	0	2	8	12,232
12	Prey Pnoeu	HC	MPA	1	1	0	0	0	1	0	1	8	16,050
13	Prey Sralet	HC	MPA	0	0	1	3	1	0	0	1	12	12,452
14	Reab	HC	MPA	0	0	1	3	0	1	0	1	7	11,915
15	Roka	HC	MPA	0	1	0	2	0	3	0	1	9	14,682
Total:				6	5	24	38	3	26	0	26	139	189,444
Preah Sdach													
1	Rumlich	HC	MPA	0	1	3	1	0	2	0	1	6	7,260
2	Angkor Reach	HC	MPA	0	0	0	4	1	0	0	1	17	11,424
3	Banteay Chakrei	HC	MPA	0	0	1	1	0	0	0	1	20	14,289
4	Boeng Daol	HC(NB)	None	0	0	0	1	0	0	0	1	11	11,218
5	Chey Kampok	HC	MPA	0	0	1	2	0	1	1	1	12	9,834
6	Kampong Prasat	HC(NB)	None	0	0	0	3	0	0	0	3	16	16,068
7	Preah Sdach	HC(NB)	None	0	0	0	2	0	0	0	1	13	12,032
8	Reathor	HC	MPA	0	0	1	2	0	1	0	2	9	11,799
9	Russei Srok	HC(NB)	None	0	0	0	3	0	0	0	2	13	14,389
Total:				0	1	6	19	1	4	1	13	117	108,313
Prey Veng													
1	Sena Reach Otdam	HC	MPA	0	0	0	2	0	1	1	1	18	11,888
2	Angkor Tret	HC(NB)	None	0	0	1	2	1	1	2	1	13	8,964
3	Chea Khlang	HC	MPA	0	1	2	4	0	1	0	2	11	9,777
4	Chong Ampil	HC(NB)	None	0	0	2	3	1	1	0	3	17	15,284
5	Chrey	HC	MPA	0	0	3	2	0	1	1	1	13	10,343

No	Facility Name	Type	Class	Dr	Ma	Nu2	Nu1	Mw2	Mw1	Others	Com Cov	Vil Cov	Pop. 04-05
6	Damrei Puon	HC(NB)	None	0	0	1	4	2	0	1	1	17	9,985
7	Kampong Leav	HC	MPA	0	3	1	2	2	0	0	2	13	18,529
8	Kdoeng Reay	HC	MPA	0	1	2	3	1	0	0	2	16	14,421
9	Mebonn	HC	MPA	0	2	2	2	0	3	2	2	15	12,511
10	Pean Rong	HC	MPA	0	0	2	1	1	1	0	1	21	14,446
11	Po Rieng	HC(NB)	None	0	0	1	2	0	1	1	1	4	6,406
12	Popoes	HC	MPA	0	1	2	6	0	2	0	2	9	10,890
13	Preaek Chrey	HC(NB)	MPA	0	0	0	4	0	1	0	2	12	14,105
14	Prey Kandieng	HC	MPA	0	0	0	4	1	2	0	2	9	15,239
15	Samraong	HC(NB)	None	0	0	0	4	0	1	2	1	14	9,411
16	Svay Antor	FDH	MPA	0	1	4	3	2	2	1	2	16	15,468
17	Teuk Thla	HC(NB)	None	0	0	2	2	0	2	0	1	18	9,403
Total:				0	9	25	50	11	20	11	27	236	207,070
Total All				11	32	102	249	28	121	34	144	1120	#####

Source: MEDiCAM – Infrastructure - (http://www.medicam-cambodia.org/hsi/health_system/srch/index.asp?cboLcn=6&cmdSearch=Search&cboCHName=&cboType=)

11.3 Deliveries in 2007 in the Province, by Operational District

OD	Deliveries	Deliveries at home		Deliveries	Total deliveries	Total deliveries
	at HC	By Health Staff	By TBAs	at RH	by Health Staff	by health staff and TBAs
Kamchay Mear	116	625	1237	20	761	1998
Kampong Trabek	32	692	1874	140	864	2738
Mesang	206	289	1882	115	610	2492
Neak Loeung	222	1581	1888	120	1923	3811
Peareang	2559	40	588	36	2635	3223
Preah Sdach	852	22	1523	39	913	2436
Prey Veng	267	1555	2249	193	2015	4264
<i>Sub-total</i>	<i>4254</i>	<i>4804</i>	<i>11241</i>	<i>663</i>	<i>9721</i>	<i>20962</i>

Source: MoH, Annual Statistics 2007

12 Education²

12.1 Schools, Classes, Students, Staff, for for all levels, for 2007/2008 by District

District	Number of Schools	Disadv. Schools	Number of Classes	Classes in Pagoda	Enrollment		Repeaters		Teaching Staff		Non-Teaching Staff		Total Staff	
					Total	Girl	Total	Girl	Total	Female	Total	Female	Total	Female
Ba Phnom	70	0	606	5	21,282	9,870	2,080	863	634	240	159	27	793	267
Kamchay Mear	45	0	479	2	20,345	9,269	2,009	792	306	60	90	12	396	72
Kampong Leav	47	0	426	3	14,437	6,544	970	400	504	247	248	111	752	358
Kampong Trabek	72	1	732	3	29,892	13,742	3,079	1,401	592	171	173	34	765	205
Kanhchreach	50	0	381	1	14,855	6,891	1,401	615	291	89	97	12	388	101
Mesang	68	0	691	4	27,820	12,165	2,724	1,143	463	73	152	8	615	81
Peam Chor	46	3	386	8	15,856	7,338	2,140	925	231	41	83	10	314	51
Peam Ror	46	1	423	0	15,133	7,131	1,221	492	512	230	134	28	646	258
Pearaing	80	1	706	11	27,076	12,525	2,811	1,138	649	203	173	17	822	220
Preah Sdech	83	2	750	4	29,858	13,654	4,115	1,774	491	177	183	21	674	198
Prey Veng	65	0	541	7	21,496	9,911	1,367	516	492	155	136	19	628	174
Sithor Kandal	55	0	382	9	15,170	6,842	1,241	509	335	81	61	3	396	84
Whole Province	727	8	6,503	57	253,220	115,882	25,158	10,568	5,500	1,767	1,689	302	7,189	2,069
- Urban Area	47	0	426	3	14,437	6,544	970	400	504	247	248	111	752	358
- Rural Area	680	8	6,077	54	238,783	109,338	24,188	10,168	4,996	1,520	1,441	191	6,437	1,711

12.2 Characteristics of Schools and School Principals for 2007/2008 by Commune

Commune	Number of Schools				2 - Shift	Floating	Schools	Attached	Schools Without			Characteristics of School Principals (Incharge)			
	Pre-Sch	Primary	College	Lycee	Schools	Schools	in Pagoda	Pre-Sch	Water Sup.	Latrine		Avg. Age	Avg. Service	U.Sec+ Ed.	Female
Preaek Chrey	0	5	1	0	2	0	4	0	1	5		40.1	21.3	1	0
Prey Kanlaong	2	2	0	0	1	0	0	2	1	1		49.6	23.5	0	0
Ta Kao	1	2	1	0	2	0	1	1	0	1		51.4	22.0	0	0
Pou Rieng	1	3	1	0	2	0	1	1	1	2		47.6	23.0	1	1
Preaek Anteah	0	5	1	0	5	0	4	0	3	3		52.0	26.2	1	0

² All the data for section 12 comes from the Ministry of Education, Youth and Sport (MoEYS)

12.3 Enrolment by Level of Education, 2006/2007 by Commune

Commune	School	Pre school		Primary School		Lower Secondary School		Upper Secondary School		Enrolment	
		Total	Female	Total	Female	Total	Female	Total	Female	Total	Female
Preaek Chrey	6	0	0	1275	558	190	68	0	0	1465	626
Prey Kanlaong	4	57	31	903	427	0	0	0	0	960	458
Ta Kao	4	72	38	897	439	121	56	0	0	1090	533
Pou Rieng	5	37	22	1227	583	213	74	0	0	1477	679
Preaek Anteah	6	0	0	1802	823	300	117	0	0	2102	940

12.4 Enrolment by Level of Education, 2007/2008 by Commune

Commune	School	Pre school		Primary School		Lower Secondary School		Upper Secondary School		Enrolment	
		Total	Female	Total	Female	Total	Female	Total	Female	Total	Female
Preaek Chrey	6	0	0	1095	502	199	70	0	0	1294	572
Prey Kanlaong	4	52	31	754	375	0	0	0	0	806	406
Ta Kao	4	80	39	797	350	211	103	0	0	1088	492
Pou Rieng	5	67	35	1119	553	210	70	0	0	1396	658
Preaek Anteah	6	0	0	1697	759	321	142	0	0	2018	901

12.5 Aspects of Enrolment for 2007/2008 by Commune

Commune	% Repeaters (Total)			% Over-age Enrollment (Total)			% Repeaters (Girl)			% Over-age Enrollment (Girl)		
	Primary	L.Sec.	U.Sec.	Primary	L.Sec.	U.Sec.	Primary	L.Sec.	U.Sec.	Primary	L.Sec.	U.Sec.
Preaek Chrey	7.6	0.5	0.0	18.2	39.2	0.0	6.4	0.0	0.0	16.5	34.3	0.0
Prey Kanlaong	5.4	0.0	0.0	20.8	0.0	0.0	3.5	0.0	0.0	22.7	0.0	0.0
Ta Kao	8.5	0.5	0.0	15.2	27.5	0.0	7.4	0.0	0.0	14.3	18.4	0.0
Pou Rieng	14.0	0.0	0.0	31.1	62.9	0.0	12.5	0.0	0.0	29.3	60.0	0.0
Preaek Anteah	13.6	0.0	0.0	28.1	53.6	0.0	14.8	0.0	0.0	24.8	50.0	0.0

12.6 School Buildings for all schools in the District for 2007/2008, by Commune

Commune	Total Number of		Concrete/Brick Structure		Wooden Structure		Bamboo Structure		New Buildings		Buildings Without Good		
	Buildings	Rooms	Buildings	Rooms	Buildings	Rooms	Buildings	Rooms	Repaired	Constructed	Floor	Roof	Wall
Preaek Chrey	21	29	17	9	4	20	0	0	0	0	0	0	0
Prey Kanlaong	10	30	8	24	2	6	0	0	0	0	5	1	1
Ta Kao	6	22	5	19	1	3	0	0	0	1	0	0	0
Pou Rieng	8	33	8	33	0	0	0	0	0	1	3	3	1
Preaek Anteah	10	54	6	34	4	20	0	0	0	0	4	1	2

12.7 Conditions of Classrooms and Existence of Separate School Office and Library, by Commune

Commune	Number of Class rooms	Number of Classrooms			Classrooms Without Good			Number of Furniture needed				Schools with Separate	
		in Pagoda	New Repaired	New Constr.	Floor	Roof	Wall	Desks	Chairs	Black-board	Teacher Table	Office	Library
Preaek Chrey	28	3	0	0	0	0	0	50	0	0	0	4	0
Prey Kanlaong	19	0	0	0	15	3	3	0	0	0	0	2	2
Ta Kao	19	0	0	5	0	0	0	0	0	0	3	2	0
Pou Rieng	29	0	0	5	11	11	3	0	0	0	0	2	1
Preaek Anteah	46	0	0	0	16	3	6	80	120	0	4	6	1

12.8 Community Participation and Financing across all schools in the District for 2007/2008 by Commune

Commune	Parent Association				Comm. Teachers	Teaching Monks	PAP Fund (Riel)		Number of Schools Obtaining Funds from				
	Exists	Held Meet	Total	Female			per Student	per School	Sch. Income	Community	Gvt. For building	Abroad	IOs/NGOs
Preaek Chrey	6	6	8	1	0	0	9,948	2,520,800	0	0	0	0	0
Prey Kanlaong	4	3	6	0	0	0	9,334	2,107,250	0	0	0	0	0
Ta Kao	4	4	7	1	0	0	8,100	2,422,000	0	0	0	0	0
Pou Rieng	5	5	5	0	0	0	10,225	2,944,900	0	1	0	0	0
Preaek Anteah	5	5	7	0	0	0	9,983	3,629,900	0	0	0	0	0

12.9 Percentage Student Flow Rates and Graduation by level 2006/2007, by Commune

Commune	Primary Level (Grades 1-6)			Lower Secondary Level (Grades 7-9)			Upper Secondary Level (Grades 10-12)			Successful Candidates		
	Promotion	Repetition	Dropout	Promotion	Repetition	Dropout	Promotion	Repetition	Dropout	Grade 6	Grade 9	Grade 12
Preaek Chrey	80.5	6.5	12.9	71.1	0.5	28.4	0.0	0.0	0.0	186	29	0
Prey Kanlaong	82.5	4.5	13.0	0.0	0.0	0.0	0.0	0.0	0.0	135	0	0
Ta Kao	85.2	7.6	7.2	78.5	0.8	20.7	0.0	0.0	0.0	127	0	0
Pou Rieng	70.8	12.8	16.4	58.7	0.0	41.3	0.0	0.0	0.0	94	30	0
Preaek Anteah	78.9	12.8	8.4	75.3	0.0	24.7	0.0	0.0	0.0	204	49	0

13 Staff and Resources at the District

This chapter presents data from the District Information System, collected around the middle of 2009 unless otherwise specified.

13.1 District Councilors elected in 2009

Name	Sex	Year of Birth	Function	Phone
គូ ឃ្យឺន	M	03-03-48	Chairperson of The Council	092-842 601
អុំ វន	M	01-06-50	Councillor	011-685 496
សំ ម៉ាក់	F	22-05-51	Councillor	097-668 5251
ធុយ លី	M	03-05-47	Councillor	011-701 678
សិត សាហន	M	10-02-54	Councillor	011-221 362
ឡាច ហាស់	M	10-05-51	Councillor	012-178 3904
សឹម សុភាព	M	12-03-52	Councillor	012-590 768
សុខ សំបួរ	M	01-01-54	Councillor	012-703 412
ទុំ សានីម	M	20-09-52	Councillor	012-991 746
ហ៊ុំ សុផល	M	18-09-66	Councillor	012-548 517
ហាស់ ថាច	M	20-03-50	Councillor	011-760 964
ជុំ សុជាតិ	M	24-08-68	Councillor	092-682 587
សក ដាង	M	02-05-60	Councillor	012-192 2305

13.2 Committees of the Council

Please note at the time of producing the district data books the composition of the committees was not known for all district councils and therefore data were not available for 13.2.1, 13.2.2, 13.2.3.

13.2.1 Technical Facilitation Committee

13.2.2 Women's and Children's Affairs Committee

13.2.3 Procurement Committee

13.3 Board of Governors

Name	Sex	DoB	Function	Salary Level	Body	Phone
ម៉ៅ គឹមឡុង	M	06-01-56	District Governor	ខ.១.៦	Medium Civil Servant	012-772 047
សាក់ សុផិ	M	01-09-75	District Deputy Governor	ខ.២.៩	Medium Civil Servant	016-883 153
ថោង សារិន	F	10-04-68	District Deputy Governor	ឃ.១.៦	Administrative Agent	092-901 358
ឃឹម រុន	M	04-05-60	District Deputy Governor	ខ.៣.១០	Medium Civil Servant	017-749 632

13.4 Offices under Sala Krong, Sala Srok and Sala Khan

Office Name	Chief		Deputy Chief		No. of Staff				Office Area (m2)	No of vehicle (public or program)	
					State		Contract			vehicle	moto
	M	F	M	F	M	F	M	F			
District/ Khan Cabinet	1	0	0	0	0	0	0	0	0	0	1
Adminnistration Office	1	0	1	0	5	0	0	0	0	0	0
Economy Office	0	0	0	0	1	0	0	0	0	0	0
Social Affair Office	1	0	0	0	3	0	0	0	0	0	0

13.5 Municipality/District/Khan line offices

Office Name	Chief		Deputy Chief		No. of Staff				Office Area (m2)	No of vehicle (public or program)	
					State		Contract			vehicle	moto
	M	F	M	F	M	F	M	F			
District/ Khan Police Headquarter	1	0	5	0	76	0	0	0	0	0	0
District/ Khan Military Police Headquarter	1	0	3	0	1	0	0	0	0	0	0
District/ Khan Military Subregion	1	0	2	0	11	0	0	0	1250	0	0
Planning Office	0	0	0	0	2	0	0	0	0	0	0
Women Affairs Office	0	1	0	0	0	1	0	0	0	0	0
Environment Office	0	0	1	0	0	0	0	0	0	0	0
Education Office	1	0	3	0	11	0	0	0	0	0	1170
District/ Khan Operational Office	1	0	2	0	17	0	0	0	0	0	0
Agriculture Office	1	0	0	0	4	0	0	0	0	0	2
Social Affairs Office	0	0	3	0	0	0	0	0	0	0	0
Culture Office	1	0	0	0	3	0	0	0	0	0	0
Cult and Religion Office	1	0	0	0	0	0	0	0	0	0	0
Finance Office	1	0	0	0	1	0	0	0	0	0	0
Public Work Office	1	0	1	0	6	0	0	0	0	0	0

13.6 Properties and Equipment of District Administration

13.6.1 Buildings

Description	Unit	Number	Remark
Office building type			
- Concrete	building	1	
- Wood	building	0	
- Mixed	building	0	
Total floor space	m2		
- Concrete	m2	423	
- Wood	m2	0	
- Mixed	m2	0	
Building condition			
- Concrete	%	50	
- Wood	%	0	
- Mixed	%	0	
Office reserved land area	m2	0	
Total office land area	m2	1,706	

13.6.2 Means of Transport available at the District Administration

Description	Unit	Number	Remark
Vehicle (type, size and condition)	Vehicle	0	
Motorcycle (type, size and condition)	Motor	0	

13.6.3 Equipment in District Offices

Description	Unit	Number	Remark
Generator	per set	0	
Photocopy machine at the office	per set	1	
Private photocopy machine at the district town	place	5	
Telephone network (mobile line service)	network	0	
Telephone network (land line service)	network	0	
Fax (include Fax number)	per set	0	
Computer	per set	1	
Printer	per set	1	
Scanner	Per set	0	
Number of computers those can access Internet and email services in the municipality/ district/khan office (including the technical line offices (please provide the email address)	set	0	
Typewriters (including the technical line offices)	per set	1	
Staff of Municipality/district/khan office can use computer	person	1	

13.6.4 Equipment and facilities at the District Town

Description	Unit	Number	Remark
Availability of electricity at noon	Nr Hours	12	
Private internet and email services in the municipality/ district/khan town.	place	0	

13.7 Registered Revenue of the District Administration in 2008³

13.8 Services in the District

13.8.1 Public Sector Services

Type of Infrastructure/services	Unit	Number	
		Public	Private
Schools			
Pre-school	room	5	0
Primary School	room	136	0
Secondary school	room	25	0
High School	room		
University	room		
Health			
Health post	place		
Health center	place		
Referral Hospital	bed		

13.9 Civil Society Organizations active in the District

13.9.1 NGOs, Associations, Programs and Projects

Name	Abbr.	Sector Activities	No. of Target Communes	No. of Target Villages	Office in District
NA	minman	មិនមាន	0	0	No
NA	None	មិនមាន	0	0	Yes
UNICEF	minman	មិនមាន	0	0	No
NA	None	មិនមាន	0	0	Yes
NA	None	មិនមាន	0	0	Yes
ACLIDA	minman	មិនមាន	0	0	No
NA	minman	មិនមាន	0	0	No
NA	minman	មិនមាន	0	0	No
NA	minman	មិនមាន	0	0	No

³ Please note that the data in this table are at best estimates. If the table appears blank it does not mean there is no revenue, just that the data have not been recorded/entered.

13.9.2 Political Parties active in the Municipality, District and Khan

Name	Abbr.	Office in District
Cambodian People Party	CPP	Yes
Human Rights Party	HRP	Yes
NRP	NRP	Yes
SAM RAINSY Party	Sam Rainsy Party	Yes

13.10 Private Sector Organizations

13.10.1 Registered Companies in 2008, by District

On private sector at commune and/or district level	PVG	Baphnom	Kam Chaymear	Kampong Trabek	Kanh Chreach	Mesang	Peam Chor
Business and Companies							
Number of registered agricultural enterprises (except family farms)	1	0	0	0	0	1	0
Number of registered shops, restaurants, transporters and other services	483	20	36	n/a	37	n/a	15
Number of manufacturing companies	5	0	0	0	0	0	0
Number of registered forestry enterprises	2	1	0	1	0	0	0
Number of registered mining companies	-	0	0	0	0	0	0
Number of financial institutions	37	4	2	3	0	3	1
Number of other commercial institutions	4	0	0	0	0	0	0
Estimated number of informal enterprises (not registered)	16	n/a	n/a	n/a	n/a	n/a	n/a
Employment							
Number of people employed in 2008 by companies or any other enterprises	26,388	n/a	4,149	n/a	2,894	n/a	1,639
Investment							
Amount invested in 2008 by private sector (\$)	25,519	22,519	n/a	n/a	n/a	n/a	n/a
Market							
Number of markets operating at least weekly	45	3	3	2	4	1	2

Continue...

On private sector at commune and/or district level	Peam Ro	Pear Rang	Prah Sdach	Svay Antor	Kampong Leav	Sithor Kandal	Prey Veng
Business and Companies							
Number of registered agricultural enterprises (except family farms)	0	0	0	0	0	0	0
Number of registered shops, restaurants, transporters and other services	25	208	n/a	61	n/a	80	1
Number of manufacturing companies	5	0	0	0	0	0	n/a
Number of registered forestry enterprises	0	0	0	0	0	0	n/a
Number of registered mining companies	0	0	0	0	0	0	n/a

On private sector at commune and/or district level	Peam Ro	Pear Rang	Prah Sdach	Svay Antor	Kampong Leav	Sithor Kandal	Prey Veng
Number of financial institutions	5	0	4	6	0	3	6
Number of other commercial institutions	1	0	0	1	0	0	2
Estimated number of informal enterprises (not registered)	n/a	n/a	n/a	16	n/a	n/a	n/a
Employment							
Number of people employed in 2008 by companies or any other enterprises	3,107	7,348	n/a	2,334	1,054	3,863	n/a
Investment							
Amount invested in 2008 by private sector (\$)	n/a	n/a	n/a	n/a	n/a	n/a	n/a
Market							
Number of markets operating at least weekly	2	19	n/a	3	2	3	1

Note: These data are not comprehensive as different companies and business are registered with different departments and not all departments were able or willing to provide detailed information. The number of informal enterprises reflects a rough estimate, made at provincial level and could not be verified.

Source: Unofficially collected at Provincial Level

13.10.2 Farmers in 2008, by District

Credit	PVG	Baphnom	Kam Chaymear	Kampong Trabek	Kanh Chreach	Mesang	Peam Chor
Volume of credit provided to farmers in 2008 (\$)	36,362,005	2,197,399	2,540,437	5,658,120	2,990,941	1,856,825	2,332,913
Number of farmers receiving credit in 2008	79,485	9,042	2,898	11,817	13,385	6,843	6,711
Volume of credit provided to companies in 2008 (\$)	-	n/a	n/a	n/a	n/a	n/a	n/a

Continue...

Credit	Peam Ro	Pear Rang	Prah Sdach	Svay Antor	Kampong Leav	Sithor Kandal	Prey Veng
Volume of credit provided to farmers in 2008 (\$)	3,488,471	3,387,519	3,285,808	2,759,765	3,780,549	2,083,258	0
Number of farmers receiving credit in 2008	1,867	2,787	10,193	4,382	7,486	2,074	0
Volume of credit provided to companies in 2008 (\$)	n/a	n/a	n/a	n/a	n/a	n/a	n/a

Note: Please note that these data are not necessarily complete or correct. The data are derived from government agencies at provincial and district level which used different recording systems, did not always have complete data or were, sometimes, less than willing to share their data.

Source: Unofficially collected at Provincial Level

SECTION E: POVERTY DATA

14 Data on Poverty

14.1 Predicted Poverty Rates for 2009, by commune

The **Predicted Family Poverty Rate** is based on a statistical model (robust multilevel mixed effect regression) at village level developed by the NCDD M&E Unit and uses CDB data for making an estimate of the predicted poverty rate (this is: *the portion of total families in the district or commune who are expected to be poor*) for the following year using current year data.

The basis for this predicted poverty rate also uses IDPoor (a project of the Ministry of Planning with technical assistance provided by GTZ) data

Commune	2004	2009
Preaek Chrey	34.90%	29.60%
Prey Kanlaong	28.80%	23%
Ta Kao	30.70%	23.70%
Pou Rieng	33.30%	26.50%
Preaek Anteah	32.70%	29.30%

14.2 Poverty data from survey

14.2.1 Identification of Poor Households Program (IDPoor)

The Ministry of Planning IDPoor Program has developed standardized Procedures for Identification of Poor Households in rural areas. These Procedures are implemented using a participatory and consultative process by sub-national government structures and community representatives.

The IDPoor Program is managed by the Ministry of Planning (MOP), in cooperation with the Ministry of Interior's Department of Local Administration (DOLA). The program is supported by the Federal Republic of Germany, with technical assistance provided by German Technical Cooperation (GTZ). In 2009, AusAID also provided funding support to the Program.

Objective

The IDPoor Program aims to implement the Procedures for Identification of Poor Households in rural areas as widely as possible, in order to provide data on the level of poverty of areas and households that can be used by a large range of institutions and organizations for targeting services and development assistance to poor areas and poor households.

Coverage: During 2007, 2008 and 2009 the IDPoor Procedures have been implemented in 18 provinces (with partial or complete coverage), covering a total of around 7000 rural villages. The MOP and a number of NGO partners who are Health Equity Fund Operators have collaborated in collecting this data from different areas.

Categorization: Identified poor households are classified under two poverty categories: Poor Level 1 (very poor), and Poor Level 2 (poor). Households are classified based on data collected using a standard questionnaire, together with consideration by villagers of these households' special circumstances.

Further information: Please go to the IDPoor Program webpage at www.mop.gov.kh/Projects/IDPoor/tabid/154/Default.aspx

This District has not yet been covered by IDPoor